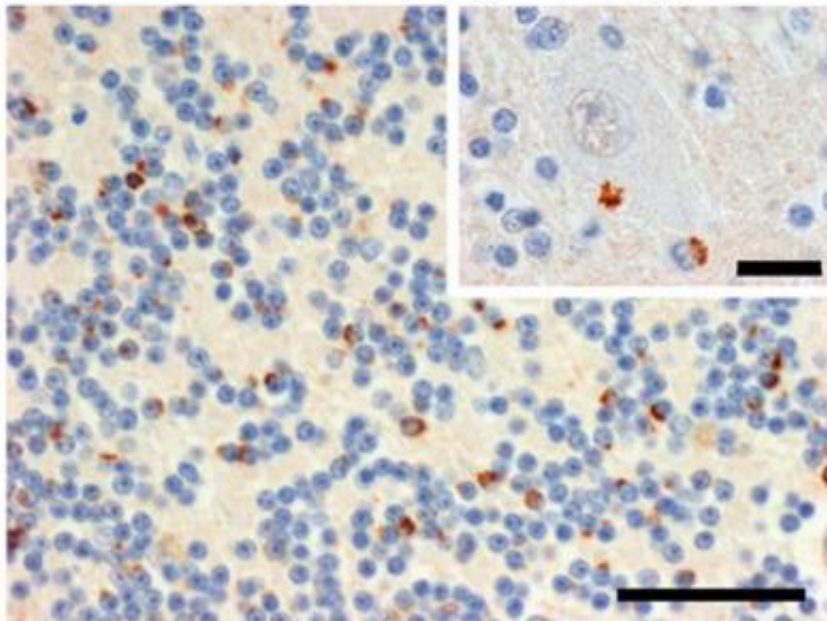


# Identification of abnormal protein may help diagnose, treat ALS and frontotemporal dementia

February 12 2013

---

## C9RANT Neuropathology



Immunohistochemistry of post-mortem tissue reveals neuronal inclusions of C9RANT in the brains of patients with c9FTD/ALS. Credit: *Neuron*, Ash et al.

Amyotrophic lateral sclerosis (ALS), or Lou Gehrig's disease, and frontotemporal dementia (FTD) are devastating neurodegenerative diseases with no effective treatment. Researchers are beginning to recognize ALS and FTD as part of a spectrum disorder with overlapping

symptoms. Now investigators reporting online February 12 in the Cell Press journal *Neuron* have discovered an abnormal protein that first forms as a result of genetic abnormalities and later builds up in the brains of many patients with either disease.

"In identifying the novel protein that abnormally accumulates in the brains of affected patients, we have uncovered a potentially new [therapeutic target](#) and biomarker that would allow clinicians to confirm diagnosis of the diseases," says senior author Dr. Leonard Petrucelli, Chair of Neuroscience at Mayo Clinic in Florida.

By analyzing [brain tissue](#) from patients with ALS or FTD, Dr. Petrucelli and his team discovered that the [abnormal protein](#), which they call C9RANT, is generated as a result of repeat expansions of nucleotides in the noncoding region of the C9ORF72 gene. These expansions are the most common cause of ALS and FTD. "Simply put, an error in the highly regulated cellular process through which proteins are generated causes the abnormal production of C9RANT," explains Dr. Petrucelli.

The researchers discovered the protein C9RANT after creating a novel antibody to specifically detect it. The ability to detect C9RANT in individuals' cerebrospinal fluid may provide a valuable diagnostic and [prognostic tool](#) for identifying patients carrying the C9ORF72 repeat expansion and for then tracking the progression of the disease in these at-risk individuals.

"Although it remains to be shown whether C9RANT is causing the cell death or toxicity associated with disease symptoms, our discovery offers a potential target to prevent neuronal loss in patients carrying the C9ORF72 repeat expansion," says Dr. Petrucelli.

The concept that abnormal proteins accumulate and can be toxic to cells is not new. In fact, tau protein forms tangles in Alzheimer's disease and

alpha-synuclein forms clumps in Parkinson's disease. Just as new therapies are being developed to break down the protein aggregates associated with these diseases, developing a therapeutic strategy to target C9RANT aggregates may also prove beneficial.

Provided by Cell Press

Citation: Identification of abnormal protein may help diagnose, treat ALS and frontotemporal dementia (2013, February 12) retrieved 30 April 2024 from <https://medicalxpress.com/news/2013-02-identification-abnormal-protein-als-frontotemporal.html>

This document is subject to copyright. Apart from any fair dealing for the purpose of private study or research, no part may be reproduced without the written permission. The content is provided for information purposes only.