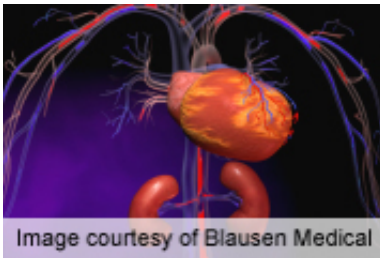


# Mortality up with CKD in PCI contrast-induced nephropathy

August 7 2014

---



(HealthDay)—Contrast-induced nephropathy (CIN) is associated with long-term mortality in patients with, but not those without, chronic kidney disease (CKD), according to a study published in the Aug. 1 issue of *The American Journal of Cardiology*.

Mitsuru Abe, M.D., from the National Hospital Organization Kyoto Medical Center in Japan, and colleagues examined the effect of CIN on long-term mortality after [percutaneous coronary intervention](#) in [patients](#) with or without CKD. Data were included for 4,371 patients who had paired serum creatinine measurements before and after percutaneous coronary intervention.

The researchers found that the incidence of CIN was 5 percent in the study cohort overall, and was 11 percent in patients with CKD and 2 percent in those without CKD (P

"In conclusion, CIN was significantly correlated with long-term mortality in patients with CKD but not in those without CKD," the authors write.

**More information:** [Abstract](#)  
[Full Text \(subscription or payment may be required\)](#)

Copyright © 2014 [HealthDay](#). All rights reserved.

Citation: Mortality up with CKD in PCI contrast-induced nephropathy (2014, August 7) retrieved 26 April 2024 from  
<https://medicalxpress.com/news/2014-08-mortality-ckd-pci-contrast-induced-nephropathy.html>

<p>This document is subject to copyright. Apart from any fair dealing for the purpose of private study or research, no part may be reproduced without the written permission. The content is provided for information purposes only.</p>
------------------------------------------------------------------------------------------------------------------------------------------------------------------------------------------------------------------------------------------