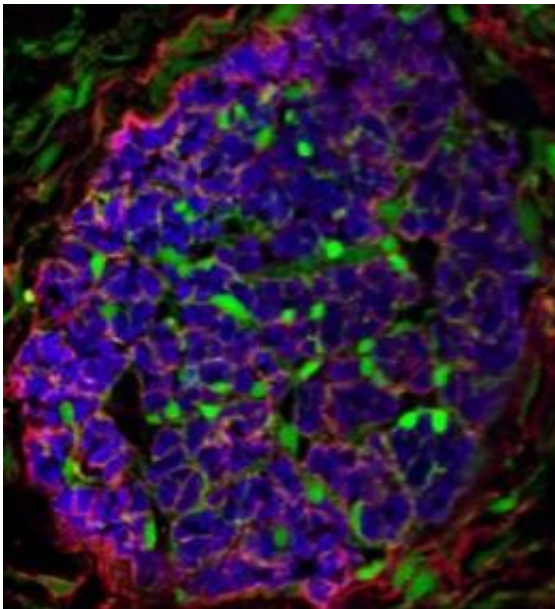


Origin of cells associated with nerve repair discovered

November 15 2010



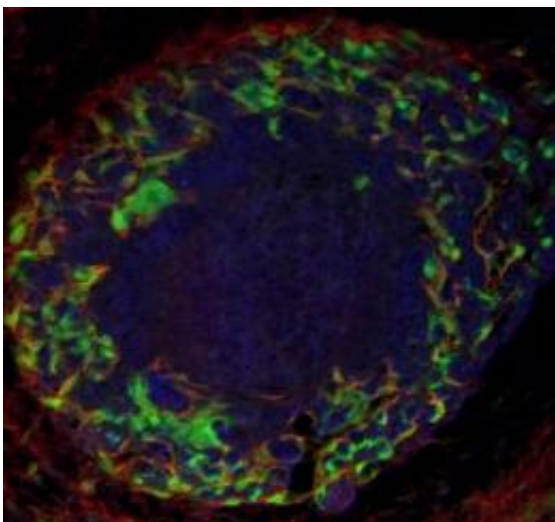
The origin of cells associated with nerve repair has been discovered. The findings could one day lead to improved treatment of spinal cord injuries. Credit: Dr. Perrine Barraud

Scientists have discovered the origin of a unique type of cell known for its ability to support regeneration in the central nervous system. Their findings, published this week in the journal *Proceedings of the National Academy of Sciences USA (PNAS)*, raise the possibility of obtaining a more reliable source of these cells for use in cell transplantation therapy for spinal cord injuries.

Olfactory ensheathing cells (OECs), as the name suggests, ensheath and protect the nerve fibres in the olfactory nerve, which transmit olfactory (smell) information to the brain from [receptor cells](#) sitting in the lining of the nose. Excitingly, OECs can promote nerve repair when transplanted into the damaged spinal cord. They can also be grown in dishes from pieces of nasal lining but, unfortunately, in such small quantities that this may not be a viable option for use in treatments.

Dr Clare Baker, from the Department of Physiology, Development and Neuroscience at the University of Cambridge, lead author of the study, said: "In theory, one should be able to purify OECs from a patient's nose and transplant them into the damaged spinal cord to promote nerve repair, without any fear of graft rejection.

"Unfortunately, there aren't very many OECs in the nasal lining, and this tissue also contains other peripheral nerve fibres, ensheathed by cells that look very similar to OECs but which are less effective at promoting spinal cord repair. As a result, it has thus far proven difficult to purify sufficiently large numbers of OECs from the nasal lining for effective use in [cell transplantation](#) therapy."



The origin of cells associated with nerve repair has been discovered. The findings could one day lead to improved treatment of spinal cord injuries.
Credit: Dr. Perrine Barraud

For the last 25 years, OECs have been thought to be formed by the nasal lining itself. The new research, however, reveals a different origin for OECs that may enable scientists in the future to produce them in large quantities from [adult stem cells](#).

The researchers, funded by the Wellcome Trust and the Isaac Newton Trust, have discovered that, like all other cells ensheathing peripheral nerve fibres, OECs are actually derived from a group of embryonic stem cells called "neural crest cells". Neural crest stem cells persist in adult skin and hair follicles, and other researchers have already shown that it is possible to isolate these stem cells and grow them in the lab.

Dr Baker said, "The next step is to work out how to turn these stem cells into OECs. To do this, we need to investigate how this process happens normally in the developing embryo."

Dr Baker continued, "It is important to note that it will take many years for our research to have any impact on therapy for people with damaged spinal cords. However, we are hopeful that our discovery provides a fresh starting point for new research into ways of purifying large numbers of these cells for use in treatments."

In order to determine the origin of OECs, the scientists tagged embryonic neural crest cells with 'green fluorescent protein' (GFP), so that only neural crest cells and their descendants glowed green under ultraviolet light. They did this in chicken embryos by transplanting GFP-labelled neural crest cells into unlabelled host embryos; they also looked

at mouse embryos in which, through a genetic trick, the only cells that expressed GFP were neural crest cells.

They were then able to follow what happened to neural crest cells and their descendants as the olfactory nerve developed. By analysing thin sections of these embryos under the microscope, they were able to see that lots of green neural crest-derived cells were associated with the developing olfactory nerve fibres. These green cells expressed molecular markers characteristic of OECs, and crucially, they ensheathed bundles of the olfactory [nerve fibres](#), i.e., they were indeed olfactory ensheathing cells.

More information: The paper 'Neural crest origin of olfactory ensheathing glia' will be published in the Early Edition the week of 15 November 2010 in *Proceedings of the National Academy of Sciences (PNAS)*.

Provided by University of Cambridge

Citation: Origin of cells associated with nerve repair discovered (2010, November 15) retrieved 18 April 2024 from <https://medicalxpress.com/news/2010-11-cells-nerve.html>

<p>This document is subject to copyright. Apart from any fair dealing for the purpose of private study or research, no part may be reproduced without the written permission. The content is provided for information purposes only.</p>
--