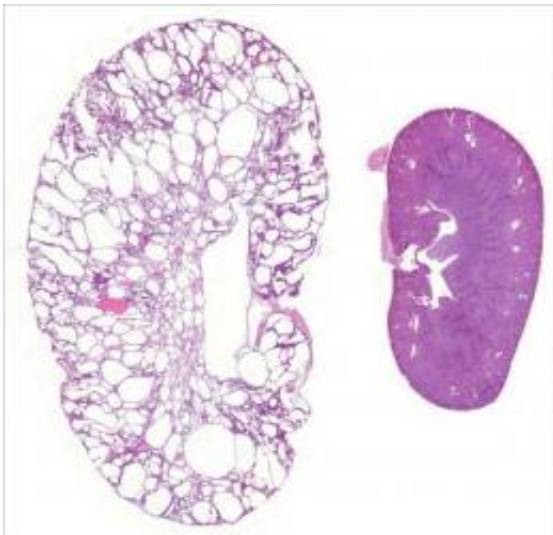


# Scientists make strides toward drug therapy for inherited kidney disease

October 27 2011

---



A polycystic mouse kidney (left) is several times larger than a normal mouse kidney (right). The tissue architecture of the diseased kidney is destroyed by the growth of numerous cysts. Credit: Thomas Weimbs and Erin Olsan

Scientists at UC Santa Barbara have discovered that patients with an inherited kidney disease may be helped by a drug that is currently available for other uses. The findings are published in this week's issue of the *Proceedings of the National Academy of Sciences*.

Over 600,000 people in the U.S., and 12 million worldwide, are affected by the inherited kidney disease known as autosomal-dominant [polycystic kidney disease](#) (ADPKD). The disease is characterized by the

proliferation of thousands of cysts that eventually debilitate the kidneys, causing [kidney failure](#) in half of all patients by the time they reach age 50. ADPKD is one of the leading causes of renal failure in the U.S.

"Currently, no treatment exists to prevent or slow cyst formation, and most ADPKD patients require kidney transplants or lifelong dialysis for survival," said Thomas Weimbs, director of the laboratory at UCSB where the discovery was made. Weimbs is an associate professor in the Department of Molecular, Cellular and [Developmental Biology](#), and in the Neuroscience Research Institute at UCSB.

Recent work in the Weimbs laboratory has revealed a key difference between kidney cysts and normal [kidney tissue](#). They found that the STAT6 signaling pathway — previously thought to be mainly important in immune cells — is activated in kidney cysts, while it is dormant in normal kidneys. Cystic kidney cells are locked in a state of continuous activation of this pathway, which leads to the excessive proliferation and cyst growth in ADPKD.

The drug Leflunomide, which is clinically approved for use in rheumatoid arthritis, has previously been shown to inhibit the STAT6 pathway in cells. Weimbs and his team found that Leflunomide is also highly effective in reducing kidney cyst growth in a mouse model of ADPKD.

"These results suggest that the STAT6 pathway is a promising drug target for possible future therapy of ADPKD," said Weimbs. "This possibility is particularly exciting because drugs that inhibit the STAT6 pathway already exist, or are in active development."

Provided by University of California - Santa Barbara

Citation: Scientists make strides toward drug therapy for inherited kidney disease (2011, October 27) retrieved 25 April 2024 from <https://medicalxpress.com/news/2011-10-scientists-drug-therapy-inherited-kidney.html>

This document is subject to copyright. Apart from any fair dealing for the purpose of private study or research, no part may be reproduced without the written permission. The content is provided for information purposes only.