

# Rule combo accurately predicts organ failure in pancreatitis

June 8 2012

---

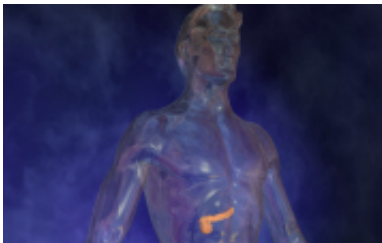


Image courtesy of Blausen Medical

A series of 12 predictive rules that combines existing scoring systems in patients with acute pancreatitis improves the accuracy of predicting persistent organ failure, according to a study published in the June issue of *Gastroenterology*.

(HealthDay) -- A series of 12 predictive rules that combines existing scoring systems in patients with acute pancreatitis improves the accuracy of predicting persistent organ failure, according to a study published in the June issue of *Gastroenterology*.

Rawad Mounzer, M.D., from the University of Pittsburgh, and colleagues compared the accuracy of scoring systems created to predict which patients with pancreatitis will develop persistent organ failure (cardiovascular, pulmonary, and/or [renal failure](#) lasting 48 hours or more). Data were collected from a training cohort (256 patients) and a validation cohort (397 patients). On admission and 48 hours later, nine clinical scores were calculated. Twelve predictive rules which combined

these scores were developed.

The researchers found that, in the training and validation cohorts, existing scoring systems showed modest accuracy (area under the curve [AUC] training cohort, 0.62 to 0.84; AUC validation cohort, 0.57 to 0.74), with the Glasgow score the best classifier at admission. In each set of patients, [serum levels](#) of creatinine and blood urea nitrogen provided similar levels of discrimination. In both cohorts, use of the 12 predictive rules increased accuracy (AUC training cohort, 0.92; AUC validation cohort, 0.84).

"The existing scoring systems seem to have reached their maximal efficacy in predicting persistent [organ failure](#) in [acute pancreatitis](#)," the authors write. "Sophisticated combinations of predictive rules are more accurate but cumbersome to use, and therefore of limited clinical use."

**More information:** [Abstract](#)

[Full Text \(subscription or payment may be required\)](#)

Copyright © 2012 [HealthDay](#). All rights reserved.

Citation: Rule combo accurately predicts organ failure in pancreatitis (2012, June 8) retrieved 17 April 2024 from

<https://medicalxpress.com/news/2012-06-combo-accurately-failure-pancreatitis.html>

<p>This document is subject to copyright. Apart from any fair dealing for the purpose of private study or research, no part may be reproduced without the written permission. The content is provided for information purposes only.</p>
------------------------------------------------------------------------------------------------------------------------------------------------------------------------------------------------------------------------------------------