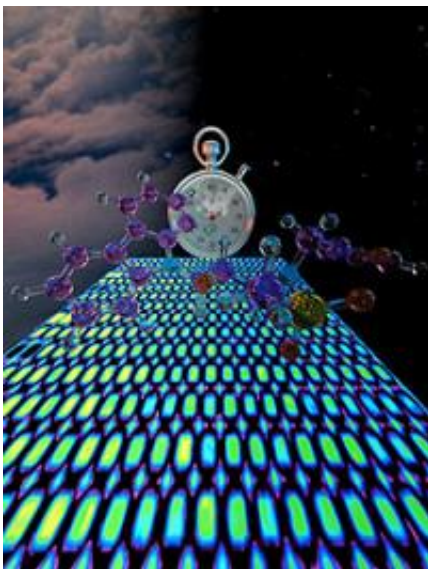


Discovery of chemical that affects biological clock offers new way to treat metabolic disorders

July 12 2012



A team of biologists has discovered a chemical that affects the activity of a key protein that regulates the internal mechanisms of our daily night and day activities or circadian rhythm. This breakthrough, detailed in a paper published this week in *Science* magazine, offers a promising new direction for developing drugs to treat metabolic disorders such as type 2 diabetes. Image by Peter Allen, UC Santa Barbara.

Biologists at UC San Diego have discovered a chemical that offers a completely new and promising direction for the development of drugs to treat metabolic disorders such as type 2 diabetes—a major public health

concern in the United States due to the current obesity epidemic.

Their discovery, detailed in a paper published July 13 in an advance online issue of the journal *Science*, initially came as a surprise because the chemical they isolated does not directly control glucose production in the liver, but instead affects the activity of a key protein that regulates the internal mechanisms of our daily night and day activities, which scientists call our circadian rhythm or biological clock.

Scientists had long suspected that [diabetes](#) and obesity could be linked to problems in the biological clock. Laboratory mice with altered biological clocks, for example, often become obese and develop diabetes. Two years ago, a team headed by Steve Kay, dean of the Division of Biological Sciences at UC San Diego, [discovered the first biochemical link](#) between the biological clock and diabetes. It found that a key protein, cryptochrome, that regulates the biological clocks of plants, insects and mammals also regulates glucose production in the liver and that altering the levels of this protein could improve the health of diabetic mice.

Now Kay and his team have discovered a small molecule—one that can be easily developed into a [drug](#)—that controls the intricate molecular cogs or timekeeping mechanisms of cryptochrome in such a manner that it can repress the production of glucose by the liver. Like mice and other animals, humans have evolved biochemical mechanisms to keep a steady supply of glucose flowing to the brain at night, when we're not eating or otherwise active.

"At the end of the night, our hormones signal that we're in a fasting state," said Kay. "And during the day, when we're active, our biological clock shuts down those fasting signals that tell our liver to make more glucose because that's when we're eating."

Diabetes is caused by an accumulation of glucose in the blood, which can lead to heart disease, strokes, kidney failure and blindness. In type 1 diabetes, destruction of insulin producing cells in the pancreas results in the high blood sugar. In [type 2 diabetes](#), which makes up 90 percent of the cases, gradual resistance to insulin because of obesity or other problems, leads to high blood sugar.

Kay and his collaborators discovered in 2010 that cryptochrome plays a critical role in regulating the internal timing of our cyclical eating patterns, timing our fasting at night with our eating during the day to maintain a steady supply of glucose in our bloodstream. Other researchers have recently discovered that cryptochrome also has the potential to reduce high blood sugar from asthma medication by adjusting the time of day a patient takes their medication. "We found that if we increased cryptochrome levels genetically in the liver we could inhibit the production of glucose by the liver," said Kay.

What he and his team found in their most recent discovery was that a much smaller molecule, dubbed "KL001" (for the first such compound from the Kay Lab), can regulate that activity as well. It slowed down the biological clock by stabilizing the cryptochrome protein—that is, it essentially prevented cryptochrome from being sent to the cellular garbage can, the proteasomes.

The discovery of KL001 was serendipitous, a complete surprise to the scientists that came about from a parallel effort in Kay's laboratory to identify molecules that lengthen the biological clock. Two years ago, Tsuyoshi Hirota, a postdoctoral fellow in Kay's laboratory found a compound that had the greatest effect ever seen on circadian rhythm, a chemical the biologists dubbed "longdaysin" because [it lengthened the daily biological clocks of human cells by more than 10 hours](#).

Continuing his search, Hirota resumed his efforts to find more chemicals

that lengthened or slowed down circadian rhythms, enabling the scientists to understand more about the intricate chemical and genetic machinery of the biological clock. He and his colleagues in Kay's lab did this by screening thousands of compounds from a chemical library with human cells in individual micro-titer wells in which a luciferase gene from fireflies is attached to the biological clock machinery, enabling the scientists to detect a glow whenever the biological clock is activated. Their molecular fishing expedition came up with a number of other compounds, one of which was KL001.

"We found other compounds that like longdaysin slowed down the biological clock," said Kay. "But unlike longdaysin, these compounds did not inhibit the protein kinases that longdaysin inhibits so we knew this compound must be working differently. What we needed to know was what is this compound interacting with? And we were absolutely stunned when we discovered that what was binding most specifically to our compound, KL001, was the clock protein cryptochrome that our lab has worked on in plants, flies and mammals for the last 20 years."

Kay's team turned to biological chemists in Peter Schultz's laboratory at The Scripps Research Institute to characterize the compound and understand better chemically how it affected cryptochrome to lengthen the biological clock.

"Those biochemical studies showed us that KL001 prevents cryptochrome from being degraded by the proteasome system, which was another big surprise," said Kay. "It essentially interferes with the signal to send cryptochrome to the garbage can."

To understand how KL001 worked mechanistically with cryptochrome to control the biological clock, the team initiated a collaboration with Frank Doyle and his group at UC Santa Barbara. "They constructed a beautiful mathematical model of cryptochrome's role in the clock," said

Kay. "That model was essential in allowing us to understand the action of the compound because the biological clock is very complicated. It's like opening the back of a Rolex and seeing the hundreds of tiny little cogs that are tightly integrated."

Based on that mathematical model, the scientists predicted that adding KL001 to mouse liver cells should stabilize cryptochrome and that the increased level of cryptochrome would inhibit the production of enzymes in the liver that stimulate the process of gluconeogenesis—the generation of glucose during fasting. Experiments done together with the laboratory of David Brenner, dean of the UC San Diego School of Medicine and Vice Chancellor for Health Sciences, confirmed that prediction to be true.

"In mouse liver cells," said Kay, "we showed that KL001 inhibited gene expression for gluconeogenesis that is induced when exposed to the hormone glucagon, which promotes glucose production by the liver. It's a hormone we all produce in fasting states. And our compound, in a dose dependent way, inhibits hepatic gluconeogenesis, the actual production of glucose by those liver cells."

Kay said the next step for the research group is to understand how KL001 and similar molecules that affect cryptochrome function in living systems, such as laboratory mice. The scientists also plan to probe how such compounds affect other processes besides the liver that may tie the [biological clock](#) to metabolic diseases. "As with any surprise discovery," he notes, "this opens the door to more opportunities for novel therapeutics than we can currently imagine."

More information: [www.sciencemag.org/content/ear ...
7/11/science.1223710](http://www.sciencemag.org/content/ear.../7/11/science.1223710)

Provided by University of California - San Diego

Citation: Discovery of chemical that affects biological clock offers new way to treat metabolic disorders (2012, July 12) retrieved 27 April 2024 from

<https://medicalxpress.com/news/2012-07-discovery-chemical-affects-biological-clock.html>

This document is subject to copyright. Apart from any fair dealing for the purpose of private study or research, no part may be reproduced without the written permission. The content is provided for information purposes only.