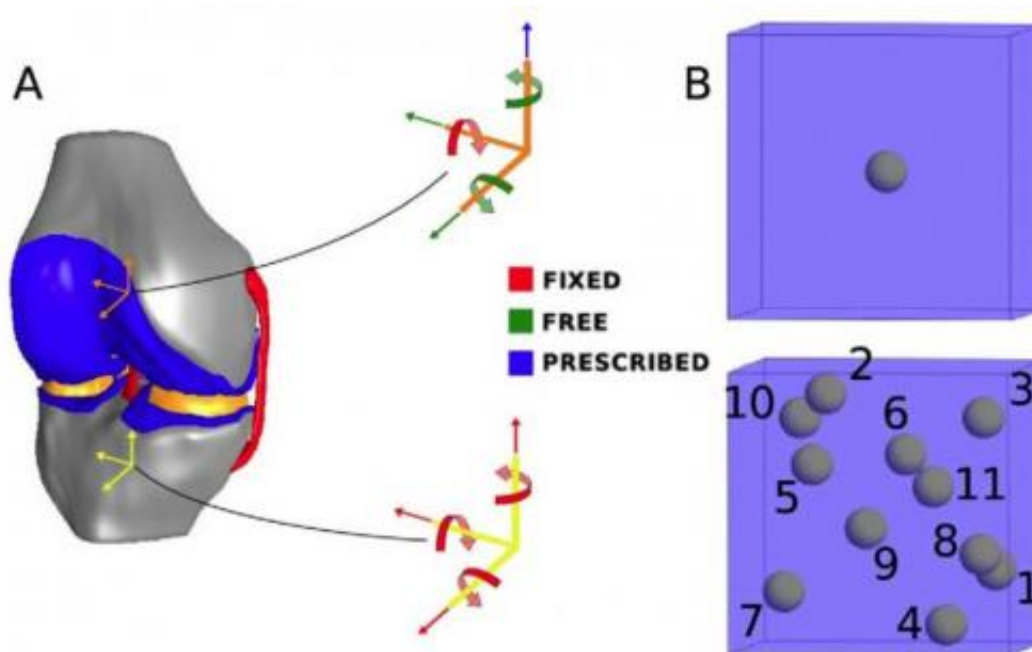


# Researchers study knee stress at tissue, cellular levels

July 24 2012



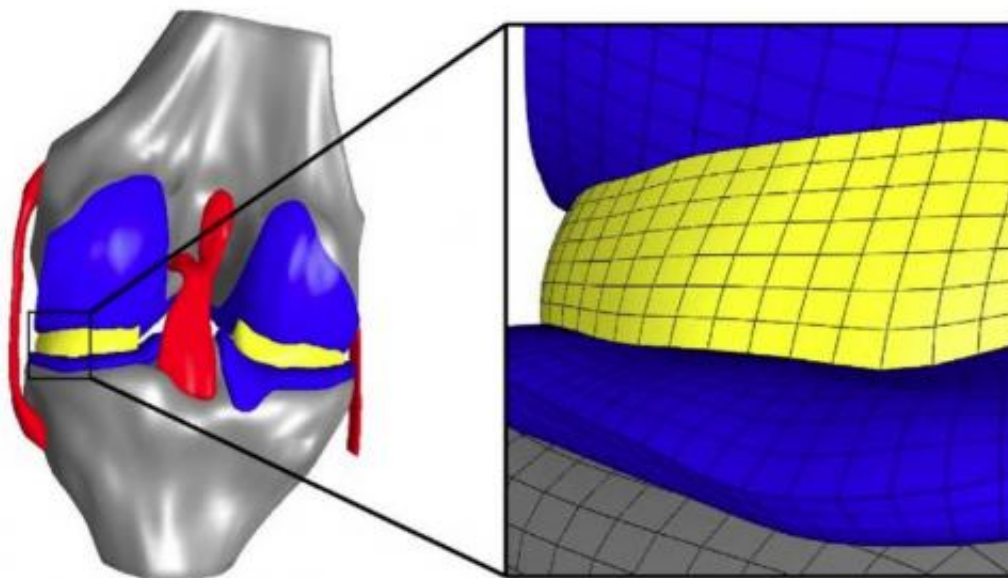
A macro-scale model of the knee (left) was created by a research team at the Cleveland Clinic to study compressive loading of the joint. At the micro scale, the single-cell model (top, right) has been used in previous studies, while Ahmet Erdemir's 11-cell model better represents the effects of loading on the individual cells. Credit: Erdemir/Cleveland Clinic

A Cleveland Clinic research team is developing virtual models of human knee joints to better understand how tissues and their individual cells react to heavy loads – virtual models that someday can be used to understand damage mechanisms caused by the aging process or by

debilitating diseases, such as osteoarthritis.

Led by Ahmet Erdemir, Ph.D., the team is leveraging the powerful computing systems of the Ohio Supercomputer Center to develop state-of-the-art computational representations of the human body to understand how movement patterns and loads on the joints deform the surrounding tissues and [cells](#). Erdemir is the director of the Computational Biomodeling Core (CoBi) and a faculty member in the Department of Biomedical Engineering at the Lerner Research Institute (LRI) in Cleveland, Ohio.

"The aging process and debilitating diseases affect many aspects of the mechanical function of the human body: from the way we move to how our muscles, joints, tissues, and cells accommodate the loading exerted on the body during daily activities," Erdemir explained. "Computational modeling techniques provide an avenue to obtain additional insights about mechanics at various spatial scales."



The Cleveland Clinic's Ahmet Erdemir, Ph.D., created this finite element model

of the knee joint with representation of the cartilage, menisci and the associated bone structures. An enlarged model region (right) illustrates the mesh resolution of the simulation. Credit: Erdemir/Cleveland Clinic

Many macro-scale studies have looked at how the various components of a knee joint – cartilage, menisci, ligaments and bone – respond to weight and other external loads. However, Erdemir and colleague Scott C. Sibole wanted to better understand how those large mechanical forces correspond to the related deformation of individual cartilage cells – or chondrocytes – within the knee. Previous micro-scale studies of cartilage have not commonly been based on data from body-level scales, in particular, by the musculoskeletal mechanics of the knee joint.

In addition, calculated deformations typically have been for a single cell at the center of a 100-cubic-micrometer block of simulated [tissue](#); Erdemir used an anatomically based representation that calculated deformations for 11 cells distributed within the same volume.

"In both micro-scale approaches, the cartilage cells experienced amplified deformations compared to those at the macro-scale, predicted by simulating the compression of tissues in the knee joint under the weight of the body," Erdemir found. "In the 11-cell case, all cells experienced less deformation than the single cell case, and also exhibited a larger variance in deformation compared to other cells residing in the same block."

Erdemir's method proved to be highly scalable because of micro-scale model independence that allowed exploitation of distributed memory computing architecture. As a result, Sibole, a research engineer at LRI, was able to leverage the computational muscle of OSC's IBM 1350 Glenn Cluster. At the time, the 9,500 nodes of the Glenn Cluster

provided 75 teraflops of computing power, tech-speak for 75 trillion calculations per second. Recently, the Glenn Cluster was partially decommissioned when engineers deployed the center's more powerful HP-Intel Xeon Oakley Cluster.

"Both of OSC's two most recent flagship computing systems were specifically designed to support biomedical applications, such as those employed by Dr. Erdemir and Mr. Sibole," said Ashok Krishnamurthy, OSC interim co-executive director. "Researchers working at Ohio's various respected medical centers are conducting an ever-increasing load of computational studies and analyses, and they now represent a significant share of our user community."

**More information:** An article authored by Erdemir and Sibole, "Chondrocyte Deformations as a Function of Tibiofemoral Joint Loading Predicted by a Generalized High-Throughput Pipeline of Multi-Scale Simulations," was recently published in *PLoS ONE*.  
[dx.doi.org/10.1371/journal.pone.0037538](https://doi.org/10.1371/journal.pone.0037538)

Provided by Ohio Supercomputer Center

Citation: Researchers study knee stress at tissue, cellular levels (2012, July 24) retrieved 27 April 2024 from <https://medicalxpress.com/news/2012-07-knee-stress-tissue-cellular.html>

This document is subject to copyright. Apart from any fair dealing for the purpose of private study or research, no part may be reproduced without the written permission. The content is provided for information purposes only.