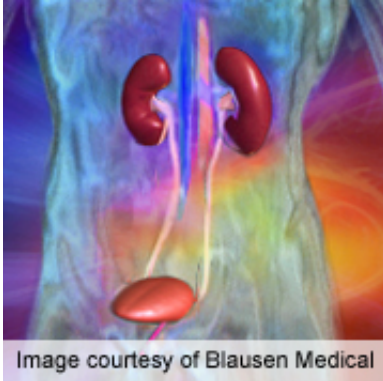


In type 2 DM, proteinuria with SBP

August 26 2012



Patients with type 2 diabetes, proteinuria, and systolic blood pressure (BP)

Citation: In type 2 DM, proteinuria with SBP

This document is subject to copyright. Apart from any fair dealing for the purpose of private study or research, no part may be reproduced without the written permission. The content is provided for information purposes only.