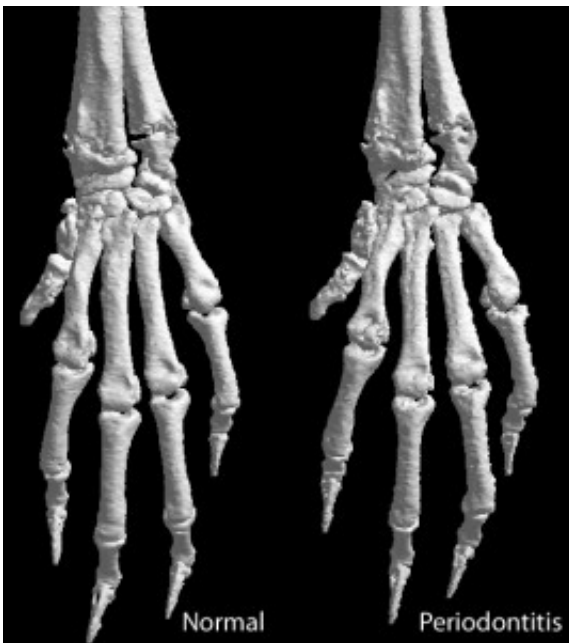


Researcher examines the relationship between gum disease and arthritis

October 16 2012



3D images of mouse paws created using live micro CT scanning. The image on the right highlights evidence of bone loss in the joints of a mouse with gum disease. Credit: Melissa Cantley/Fresh Science

Adelaide scientists have found that mice with gum disease develop worse arthritis.

The scientists are using this knowledge to investigate whether treating mouth conditions could help relieve arthritis.

As part of her PhD studies, Melissa Cantley worked with colleagues at the University of Adelaide to develop a new way to study these two diseases and their relationship. She is presenting her research this week as part of Fresh Science — a national program for early-career scientists.

"In this model we can induce gum disease in mice using a type of bacteria associated with human disease," Melissa said.

"We can then induce [inflammatory arthritis](#) to better understand how one disease influences another," she said.

"We found that mice with gum disease developed worse arthritis."

Studies have shown that patients with [rheumatoid arthritis](#) are more likely to suffer [tooth loss](#) than those without rheumatoid arthritis. This is often associated with a gum disease called periodontal disease, which results in red, inflamed gums and loss of bone and tissues that support the teeth.

More than 60 per cent of the world's population suffers from [periodontitis](#).

In rheumatoid arthritis, the body's immune system attacks healthy tissue in the joints, leading to inflammation and loss of bone and cartilage. This results in a painful condition which impacts normal joint function.

The research also found signs of [bone loss](#) in the joints of mice with gum disease alone and bone loss in the jaws of mice with arthritis alone.

"Not only did the [gum disease](#) influence joint tissues, but arthritis also influenced tissues in the mouth," Melissa said.

"The relationship between these two [common diseases](#) is very complex

and we can now use this model to further our understanding," she said

Translation to clinical studies is underway to determine if treatment of periodontitis can help reduce the symptoms associated with arthritis.

The research is a result of unique collaborations between both the Discipline of Anatomy and Pathology in the School of Medical Sciences and the School of Dentistry. Melissa's PhD supervisors are Associate Professor David Haynes and Professor Mark Bartold.

Melissa Cantley is one of 12 early-career scientists unveiling their research to the public for the first time thanks to Fresh Science, a national program sponsored by the Australian Government.

More information: www.ncbi.nlm.nih.gov/pubmed/21434962

Provided by Science in Public

Citation: Researcher examines the relationship between gum disease and arthritis (2012, October 16) retrieved 25 April 2024 from <https://medicalxpress.com/news/2012-10-relationship-gum-disease-arthritis.html>

This document is subject to copyright. Apart from any fair dealing for the purpose of private study or research, no part may be reproduced without the written permission. The content is provided for information purposes only.