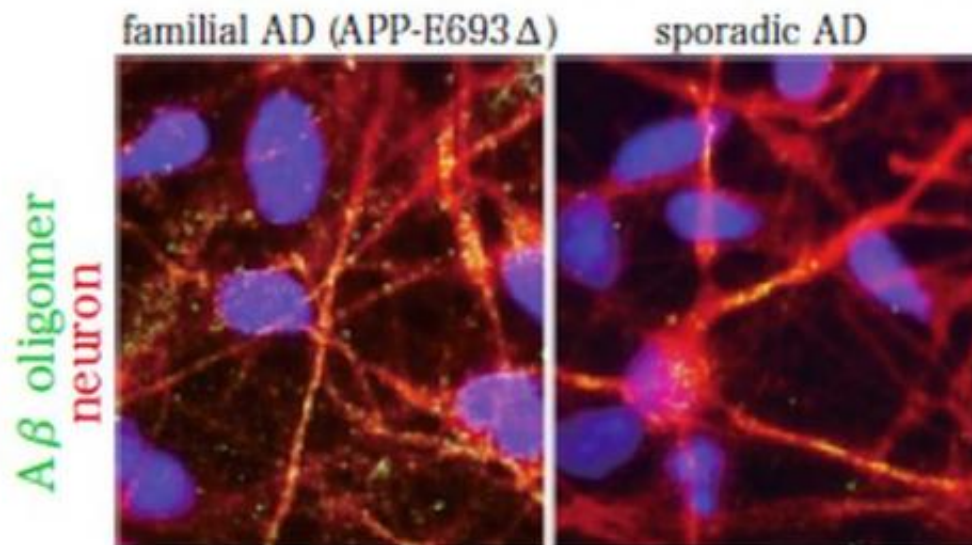


# Modeling Alzheimer's disease using iPSCs

February 21 2013

---



This shows amyloid beta oligomers in neurons from a familial AD (APP-E693 delta) (left) and from a sporadic AD patient [right]. Credit: Courtesy of Dr. Haruhisa Inoue's laboratory

Working with a group from Nagasaki University, a research group at the Center for iPS Cell Research and Application (CiRA) at Japan's Kyoto University has announced in the Feb. 21 online publication of *Cell Stem Cell* has successfully modeled Alzheimer's disease (AD) using both familial and sporadic patient-derived induced pluripotent stem cells (iPSCs), and revealed stress phenotypes and differential drug responsiveness associated with intracellular amyloid beta oligomers in AD neurons and astrocytes.

In a study published online in *Cell Stem Cell*, Associate Professor Haruhisa Inoue and his team at CiRA and a research group led by Professor Nobuhisa Iwata of Nagasaki University generated [cortical neurons](#) and [astrocytes](#) from iPSCs derived from two familial AD patients with mutations in amyloid [precursor protein](#) (APP), and two sporadic AD patients. The [neural cells](#) from one of the familial and one of the sporadic patients showed endoplasmic reticulum (ER)-stress and oxidative-stress phenotypes associated with intracellular amyloid beta oligomers. The team also found that these stress phenotypes were attenuated with docosahexaenoic acid (DHA) treatment. These findings may help explain the variable clinical results obtained using DHA treatment, and suggest that DHA may in fact be effective only for a subset of patients.

Using both familial and sporadic AD iPSCs, the researchers discovered that pathogenesis differed between individual AD patients. For example, secreted amyloid beta 42 levels were depressed in familial AD with APP E693 delta mutation, elevated in familial AD with APP V717L mutation, but normal in sporadic AD.

"This shows that patient classification by iPSC technology may contribute to a preemptive therapeutic approach toward AD," said Inoue, a principal investigator at CiRA who is also a research director for the CREST research program funded by the Japan Science and Technology Agency. "Further advances in iPSC technology will be required before large-scale analysis of AD patient-specific iPSCs is possible."

**More information:** Kondo et al. "Modeling Alzheimer's disease using iPSCs reveals stress phenotypes associated with intracellular amyloid beta and differential drug responsiveness."

Provided by Kyoto University

Citation: Modeling Alzheimer's disease using iPSCs (2013, February 21) retrieved 26 April 2024 from <https://medicalxpress.com/news/2013-02-alzheimer-disease-ipscs.html>

This document is subject to copyright. Apart from any fair dealing for the purpose of private study or research, no part may be reproduced without the written permission. The content is provided for information purposes only.