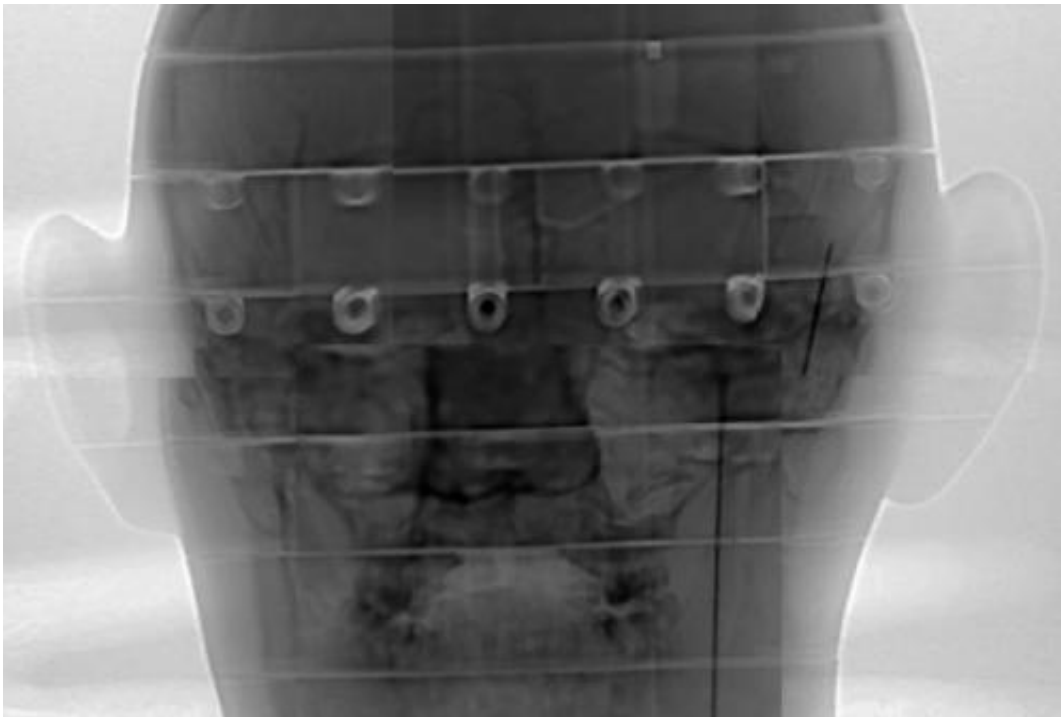


Scientists examine proton radiography of brain mockup

March 26 2013



Proton radiograph of a high-fidelity mockup of a human head.

Los Alamos researchers and German collaborators have investigated the application of giga-electron volt (GeV, or billion electron volts) energy proton beams for medical imaging in combination with proton radiation treatment for cancer.

The use of such a high-energy [proton beam](#) is ideal for imaging small

tumors within patients for targeted proton therapy. Proton radiography, which was invented at Los Alamos, employs a high-energy proton beam to image the properties and behavior of materials.

Significance of the research

Proton beams for [cancer treatment](#) use the dramatic increase in [energy deposition](#) as the proton stops in tissue to kill the tumors. The incident proton beam must have relatively low energy (approximately 200 MeV) to stop within the human body. However, the low energy proton beam is susceptible to multiple scattering that spreads the beam at the end of its range, just as the protons reach the tumor. This effect restricts the utility of proton therapy to relatively large tumors. The German researchers have discovered that increasing the energy of the proton beam to a GeV reduces the scattering. The GeV proton beam, called a "proton knife," enables [proton therapy](#) to be applied to smaller tumors with greater accuracy. Irradiating the tumor from multiple angles allows uniform distribution of protons throughout its volume.

Locating the position of small tumors very accurately is difficult. Presently, X-ray CAT (computed axial tomography) scan results are collected weeks or months before treatment sessions. The "map" of the internal structure from the [CAT scan](#) is used to guide the proton beam to the tumor location within the body. This can be problematic as the tumor position can change within the body between the CAT scan and the treatment. Treating smaller tumors requires locating them precisely during the treatment session. A 1 GeV proton beam, which is used for the treatment, could image the [tumor](#) within the patient.

Research achievements

The Los Alamos researchers and collaborators investigated GeV proton

radiography at LANSCE using biological samples and a high-fidelity human head mockup, called a Matroshka. This mockup was designed and built for dose measurements of humans in the International Space Station. The Matroshka's density and internal structure accurately matches a human head. The team radiographed the mockup with protons to determine the ability of GeV radiography to locate internal features. The scientists observed sub-mm resolution of features and contrast for structures located in soft tissue.

Provided by Los Alamos National Laboratory

Citation: Scientists examine proton radiography of brain mockup (2013, March 26) retrieved 24 April 2024 from

<https://medicalxpress.com/news/2013-03-scientists-proton-radiography-brain-mockup.html>

<p>This document is subject to copyright. Apart from any fair dealing for the purpose of private study or research, no part may be reproduced without the written permission. The content is provided for information purposes only.</p>
--