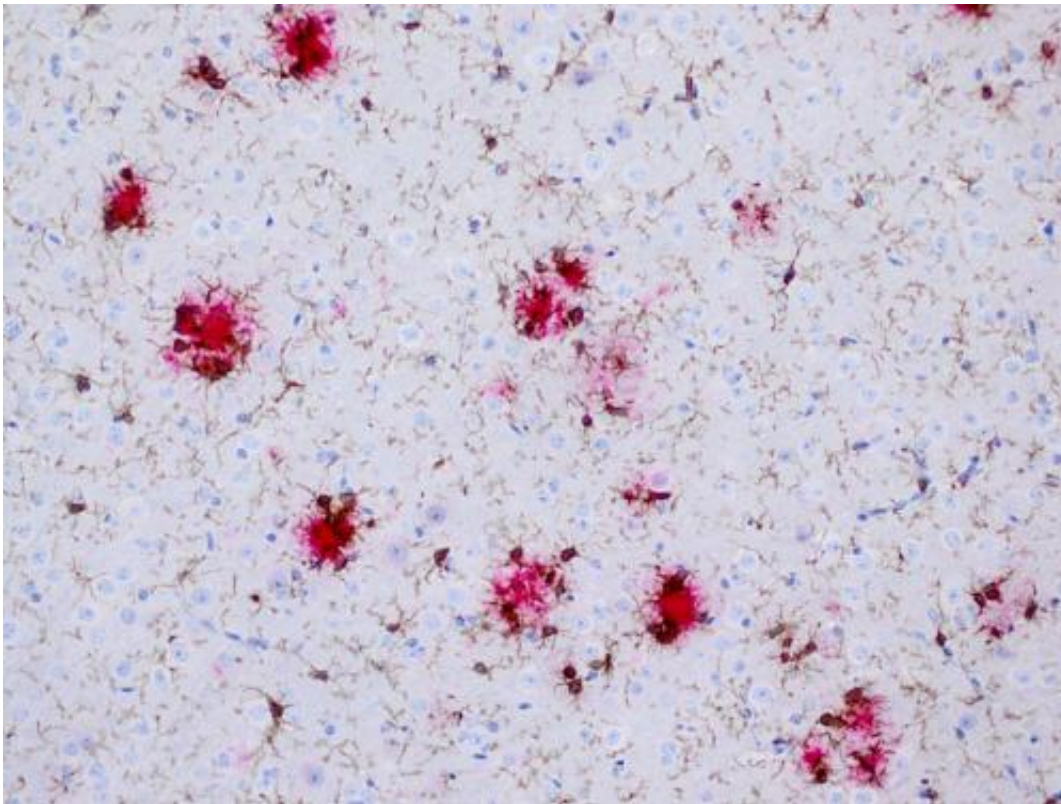


New findings on the brain's immune cells during Alzheimer's disease progression

April 11 2013



The photos shows microglia (brown), clustering around the beta-amyloid deposits (red) in a mouse model for Alzheimer's disease. Credit: Frank Heppner/
Copyright: Charité

The plaque deposits in the brain of Alzheimer's patients are surrounded by the brain's own immune cells, the microglia. This was already recognized by Alois Alzheimer more than one hundred years ago. But

until today it still remains unclear what role microglia play in Alzheimer's disease. Do they help to break down the plaque deposit? A study by researchers of the Max Delbrück Center for Molecular Medicine (MDC) Berlin-Buch and Charité – Universitätsmedizin Berlin has now shed light on these mysterious microglia during the progression of Alzheimer's disease.

Dr. Grietje Krabbe of the laboratory of Professor Helmut Kettenmann (MDC) and Dr. Annett Halle of the Neuropathology Department of the Charité headed by Professor Frank Heppner demonstrated that the microglial cells around the deposits do not show the classical activation pattern in mouse models of Alzheimer's disease. On the contrary, in the course of the Alzheimer's disease they lose two of their biological functions. Both their ability to remove cell fragments or harmful structures and their directed process motility towards acute lesions are impaired. The impact of the latter loss-of-function needs further investigation. The plaques consist of [protein fragments](#), the beta-amyloid peptides, which in Alzheimer's disease are deposited in the brain over the course of years. They are believed to be involved in destroying the [nerve cells](#) of the affected patients, resulting in an incurable [cognitive decline](#).

However, just why the microglial cells, which cluster around the deposits, are inactivated or lose their functionality is still not fully understood. The researchers concluded that this process occurs at a very early stage of disease development and is likely triggered by the beta-amyloid. This is confirmed by the fact that the loss-of-function of the [microglial cells](#) in the mice could be reversed by beta-amyloid antibodies thereby decreasing the beta-amyloid burden. According to the researchers, the potential to restore microglial function by directed manipulation should be pursued and exploited to develop treatments for Alzheimer's disease.

More information: *PLOS One*, [doi:10.1371/journal.pone.0060921](https://doi.org/10.1371/journal.pone.0060921)

Provided by Helmholtz Association of German Research Centres

Citation: New findings on the brain's immune cells during Alzheimer's disease progression (2013, April 11) retrieved 6 May 2024 from <https://medicalxpress.com/news/2013-04-brain-immune-cells-alzheimer-disease.html>

This document is subject to copyright. Apart from any fair dealing for the purpose of private study or research, no part may be reproduced without the written permission. The content is provided for information purposes only.