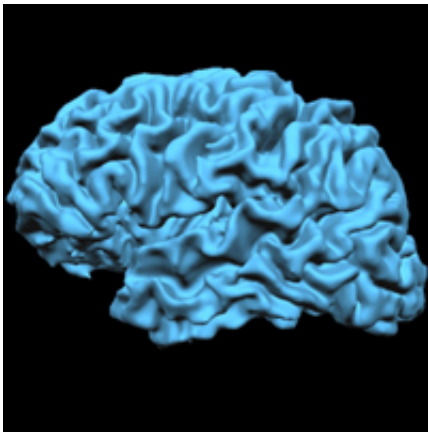


# 'Should I stay or should I go?'

## Neuroscientists link brain cell types to behavior

May 26 2013, by Edward Brydon Ph.d.

---



MRI brain scan

Neuroscientists from Cold Spring Harbor Laboratory, led by Assistant Professor Adam Kepecs, have linked the activity of two types of brain nerve cells, neurons, to decisions made during particular type of behavior. The team studied the activity of two types of inhibitory neurons in mice making decisions searching for food in a test area. They found distinct patterns of activity that marked when "stay" or to "go" foraging decisions were made.

You are sitting on your couch flipping through TV channels trying to decide whether to stay put or get up for a snack. Such everyday decisions

about whether to "stay" or to "go" are supported by a brain region called the [anterior cingulate cortex](#) (ACC), which is part of the prefrontal cortex. Neuroscientists from Cold Spring Harbor Laboratory (CSHL) have now identified key circuit elements that contribute to such decisions in the ACC.

CSHL Associate Professor Adam Kepecs and his team today publish results that, for the first time, link specific brain cell types to a particular [behavior pattern](#) in mice – a "stay or go" pattern called foraging behavior. The paper, published online in *Nature*, shows that the firing of two distinct types of inhibitory neurons, known as [somatostatin](#) (SOM) and parvalbumin (PV) neurons, has a strong correlation with the start and end of a period of foraging behavior.

Linking specific neuronal types to well-defined behaviors has proved extremely difficult. "There's a big gap in our knowledge between our understanding of neuron types in terms of their physical location and their place in any given neural circuit, and what these neurons actually do during behavior," says Kepecs.

Part of the problem is the technical challenge of doing these studies in live, freely behaving mice. Key to solving that problem is a mouse model developed in the laboratory of CSHL Professor Z. Josh Huang. The mouse has a [genetic modification](#) that allows investigators to target a specific population of neurons with any protein of interest.

Kepecs' group, led by postdocs Duda Kvitsiani and Sachin Ranade, used this mouse to label specific neuron types in the ACC with a light-activated protein – a technique known as optogenetic tagging. Whenever they shone light onto the brains of the mice they were recording from, only the tagged PV and SOM neurons responded promptly with a 'spike' in their activity, enabling the researchers to pick them out from the vast diversity of cellular responses seen at any given moment.

The team recorded neural activity in the ACC of these mice while they engaged in [foraging behavior](#). They discovered that the PV and SOM inhibitory neurons responded around the time of the foraging decisions—in other words whether to stay and drink or go and explore elsewhere. Specifically, when the mice entered an area where they could collect a water reward, SOM inhibitory neurons shut down and entered a period of low-level activity, thereby opening a 'gate' for information to flow in to ACC. When the mice decided to leave that area and look elsewhere, PV [inhibitory neurons](#) fired and abruptly reset cell activity.

"The brain is complex and continuously active, so it makes sense that these two types of inhibitory interneurons define the boundaries of a behavior such as foraging, opening and then closing the 'gate' within a particular [neural circuit](#) through changes in their activity," says Kepecs.

This is an important advance, addressing a problem in behavioral neuroscience that scientists call "the cortical response zoo." When researchers record neural activity in cortex during behavior, and they don't know which type of neurons they are recording from, a bewildering array of responses is seen. This greatly complicates the task of interpretation. Hence the significance of the Kepecs team's results, for the first time showing that specific cortical neuron types can be linked to specific aspects of behavior.

"We think about the brain and behavior in terms of levels; what the cell types are and the circuits or networks they form; which regions of the brain they are in; and what behavior is modulated by them," explains Kepecs. "By observing that the activity of specific [cell types](#) in the [prefrontal cortex](#) is correlated with a behavioral period, we have identified a link between these levels."

**More information:** "Distinct behavioural and network correlates of two interneuron types in prefrontal cortex" is published online in *Nature*

on May 26, 2013. The authors are: D. Kvitsiani, S. Ranade, B. Hangya, H. Taniguchi, Z. J. Huang, A. Kepecs. [doi:10.1038/nature12176](https://doi.org/10.1038/nature12176)

Provided by Cold Spring Harbor Laboratory

Citation: 'Should I stay or should I go?' Neuroscientists link brain cell types to behavior (2013, May 26) retrieved 6 May 2024 from <https://medicalxpress.com/news/2013-05-neuroscientists-link-brain-cell-behavior.html>

<p>This document is subject to copyright. Apart from any fair dealing for the purpose of private study or research, no part may be reproduced without the written permission. The content is provided for information purposes only.</p>
--