

# Mortality 38 percent for spinal cord injury tied to C-spine Fx

August 7 2013

---

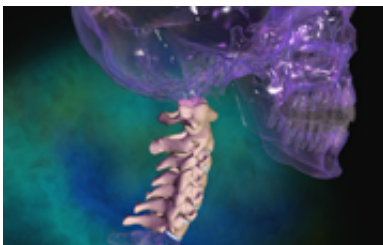


Image courtesy of Blausen Medical

For older adults with spinal cord injuries (SCIs) related to cervical spine fractures, injury level and severity of SCI are risk factors for mortality, according to a study published in the August issue of *The Spine Journal*.

(HealthDay)—For older adults with spinal cord injuries (SCIs) related to cervical spine (C-spine) fractures, injury level and severity of SCI are risk factors for mortality, according to a study published in the August issue of *The Spine Journal*.

Parham Daneshvar, M.D., from the University of Ottawa in Canada, and colleagues conducted a [retrospective cohort study](#) at two Level 1 [trauma centers](#) involving 37 consecutive patients aged 60 years or older with SCIs related to C-spine fractures. The mortality rate was determined and risk factors for negative outcomes examined.

The researchers found that the in-hospital mortality rate was 38 percent,

with the leading cause of death being [respiratory failure](#). Pre-injury medical comorbidities, age, or operative versus non-operative treatment had no impact on mortality. The risk of mortality was 7.1 times higher for injury level at or above C4 versus below C4 (P = 0.01), and was 5.1 times higher for complete SCI versus incomplete SCI (P = 0.03). Neurological recovery was found to be uncommon. Severity of initial SCI was the only factor related to ambulatory disposition at discharge.

"In summary, a complete SCI and a high level of injury significantly increased the risk of mortality in elderly patients," the authors write. "Using this knowledge, physicians may be able to better determine prognosis and treatment in elderly patients with C-spine fractures and concomitant SCI."

**More information:** [Abstract](#)  
[Full Text \(subscription or payment may be required\)](#)

[Health News](#) Copyright © 2013 [HealthDay](#). All rights reserved.

Citation: Mortality 38 percent for spinal cord injury tied to C-spine Fx (2013, August 7)  
retrieved 20 April 2024 from  
<https://medicalxpress.com/news/2013-08-mortality-percent-spinal-cord-injury.html>

<p>This document is subject to copyright. Apart from any fair dealing for the purpose of private study or research, no part may be reproduced without the written permission. The content is provided for information purposes only.</p>
--