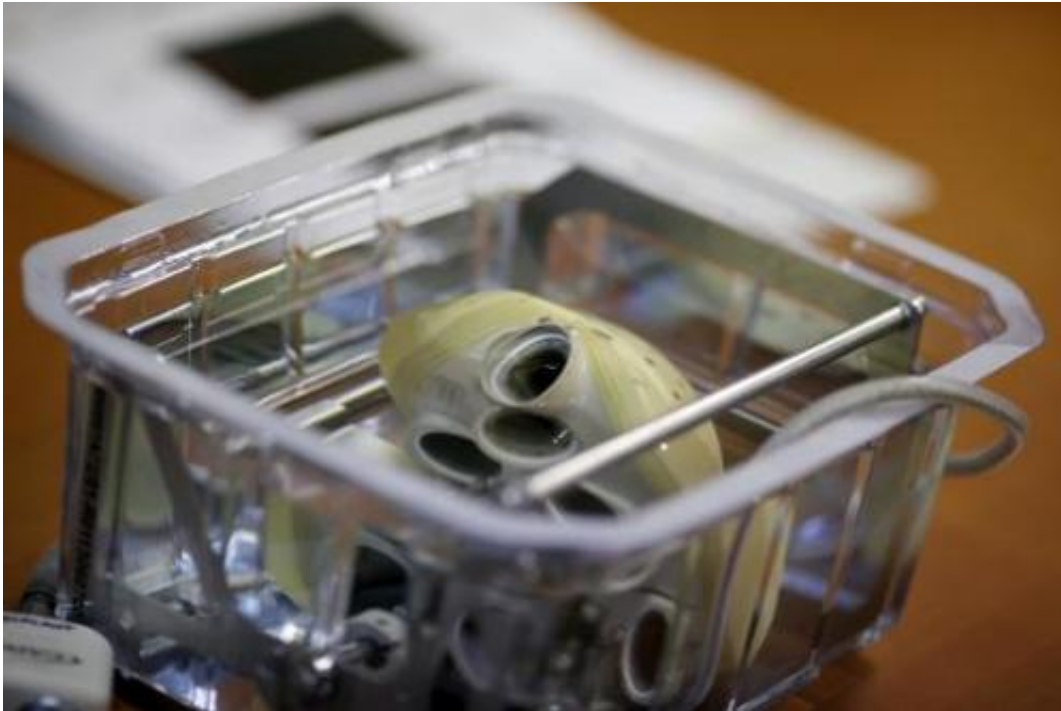


## Second artificial heart implant due in 'weeks'

March 17 2014

---



A picture taken on December 21, 2013 at Georges Pompidou European hospital in Paris, shows an artificial heart produced by Biomedical firm Carmat

After its first recipient died, French biomedical firm Carmat said on Monday it expected to try again to implant its experimental artificial heart in another patient "in several weeks".

Artificial hearts have been in use for many years as a temporary fix for patients with chronic heart problems, but the Carmat product aims to provide a longer-term solution to enable hospitalised patients to return

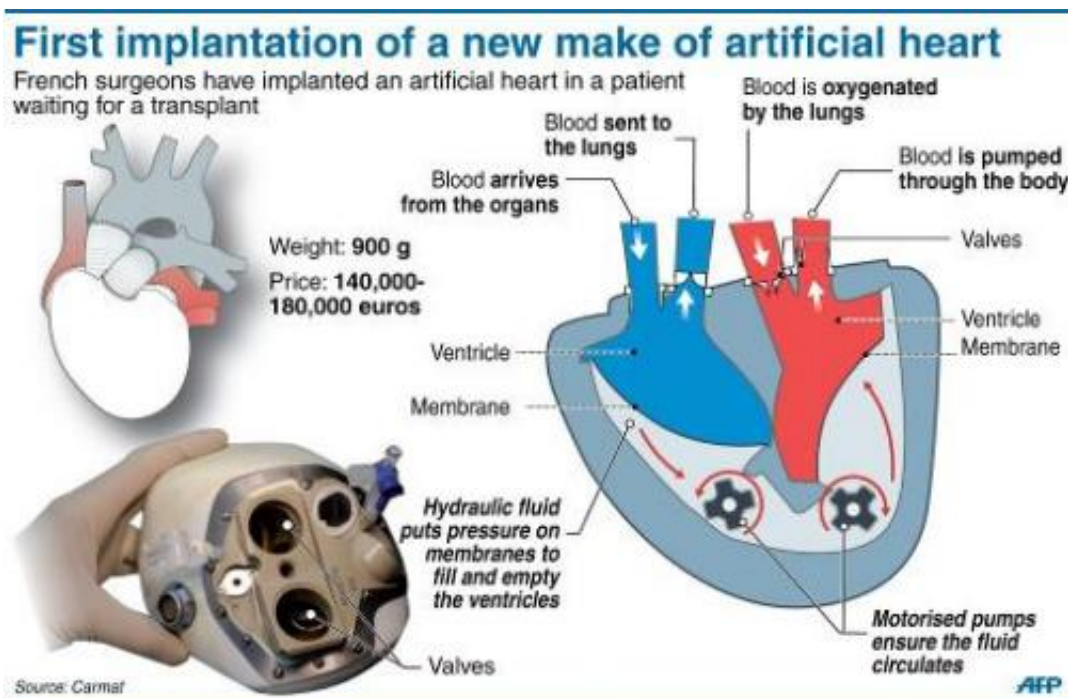
home and lead normal lives.

Philippe Pouletty, Carmat co-founder, told Europe 1 radio that a second experiment would depend on finding a suitable patient, adding that the company still had to wait for the results of an in-depth analysis of the first trial on a 76-year-old man.

The septuagenarian with terminal [heart disease](#) died on March 2, two-and-a-half months after being implanted with the artificial device.

"Currently we don't know what the patient's cause of death is, we are doing in-depth analyses before going on to the next implant," Pouletty said, appearing to refute a theory that a short circuit caused the device to stop working.

The company is hoping to trial the [artificial heart](#) in a total of four [patients](#), and if all survive for at least one month, the experiment will be deemed a success.



Graphic presenting the artificial heart developed by French firm Carmat

The device, a self-contained unit implanted in a patient's chest, is a mix of synthetic materials and animal tissue, and seeks to mimic the form and function of an actual human heart.

In that sense, it varies greatly from other artificial hearts currently being used, which are cruder, mostly synthetic pumps.

Nearly 100,000 people in Europe and the United States are in need of a [heart](#) transplant, according to Carmat.

© 2014 AFP

Citation: Second artificial heart implant due in 'weeks' (2014, March 17) retrieved 25 June 2024 from <https://medicalxpress.com/news/2014-03-artificial-heart-implant-due-weeks.html>

This document is subject to copyright. Apart from any fair dealing for the purpose of private study or research, no part may be reproduced without the written permission. The content is provided for information purposes only.