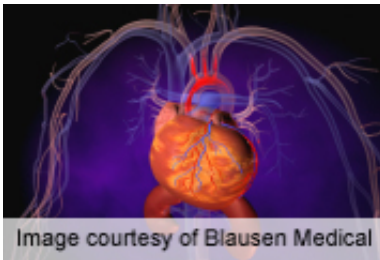


# Memory impairment prevalent in elderly with heart failure

April 3 2014

---



(HealthDay)—For older adults with chronic heart failure, memory impairment is common, with impairment correlating positively with heart failure severity, according to a study published in the April 1 issue of *The American Journal of Cardiology*.

Olivier Hanon, M.D., Ph.D., from the Hôpital Broca in Paris, and colleagues examined the prevalence of [memory impairment](#) in ambulatory patients (aged  $\geq 70$  years) with chronic [heart failure](#). From January to November 2009, 291 cardiologists recruited 912 ambulatory patients with heart failure (mean age, 79.2 years). The delayed-recall Memory Impairment Screen (MIS-D) was used to evaluate memory, with memory impairment and severe memory impairment defined as a MIS-D score of  $\leq 6$  and  $\leq 4$ , respectively.

The researchers identified memory impairment and severe memory

impairment in 45.6 and 23.4 percent of participants, respectively, while before MIS evaluation, cardiologists suspected memory impairment in 12 percent. Older age, lower education level, depression, history of stroke, [renal failure](#), and less [regular physical activity](#) were determinants of memory disorders. There was a positive correlation between the severity of memory impairment and the severity of heart failure (New York Heart Association classification, P

"This study found that memory impairment was frequent in patients with [chronic heart failure](#) and often underrecognized by cardiologists," the authors write. "Memory impairment can be detected easily using a simple test, which is important because memory deficits may have implications for drugs and lifestyle compliance."

Several authors disclosed receiving honoraria from Menarini as consultants related to the study.

**More information:** [Abstract](#)  
[Full Text \(subscription or payment may be required\)](#)

Copyright © 2014 [HealthDay](#). All rights reserved.

Citation: Memory impairment prevalent in elderly with heart failure (2014, April 3) retrieved 3 May 2024 from <https://medicalxpress.com/news/2014-04-memory-impairment-prevalent-elderly-heart.html>

<p>This document is subject to copyright. Apart from any fair dealing for the purpose of private study or research, no part may be reproduced without the written permission. The content is provided for information purposes only.</p>
--