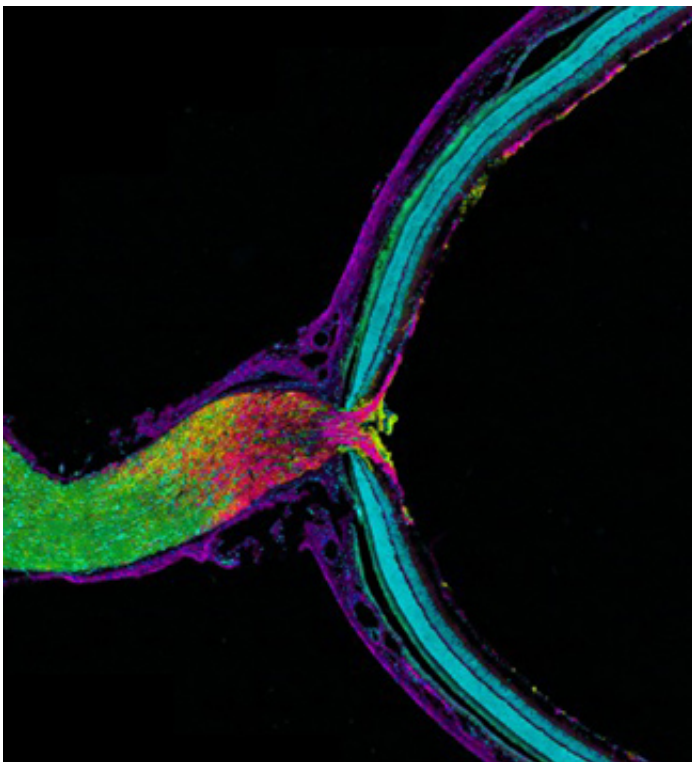


# Getting rid of old mitochondria: Some neurons turn to neighbors to help take out the trash

June 16 2014

---



Pictured is mouse optic nerve and retina, responsible for relaying information from the eye to the brain. The tissue has been fluorescently stained to reveal the distribution of astrocytes (yellow), retinal ganglion cell axons (purple), myelin (green) and nuclei (cyan). Retinal ganglion cell axons transfer mitochondria to adjacent astrocytes in the optic nerve head behind the retina. Astrocytes degrade the mitochondria in a process called transmitophagy. Credit: Mark Ellisman, NCMIR, UC San Diego.

It's broadly assumed that cells degrade and recycle their own old or damaged organelles, but researchers at University of California, San Diego School of Medicine, The Johns Hopkins University School of Medicine and Kennedy Krieger Institute have discovered that some neurons transfer unwanted mitochondria – the tiny power plants inside cells – to supporting glial cells called astrocytes for disposal.

The findings, published in the June 17 online Early Edition of *PNAS*, suggest some basic biology may need revising, but they also have potential implications for improving the understanding and treatment of many neurodegenerative and [metabolic disorders](#).

"It does call into question the conventional assumption that cells necessarily degrade their own organelles. We don't yet know how generalized this process is throughout the brain, but our work suggests it's probably widespread," said Mark H. Ellisman, PhD, Distinguished Professor of Neurosciences, director of the National Center for Microscopy and Imaging Research (NCMIR) at UC San Diego and co-senior author of the study with Nicholas Marsh-Armstrong, PhD, in the Department of Neuroscience at Johns Hopkins University and the Hugo W. Moser Research Institute at Kennedy Krieger Institute in Baltimore.

"The discovery of a standard process for transfer of trash from neuron to glia will most likely be very important to understanding age-related declines in function of the brain and neurodegenerative or metabolic disorders," Marsh-Armstrong said. "We expect the impact to be significant in other areas of biomedicine as well."

The researchers looked specifically at the axons of [retinal ganglion cells](#) in mice, a type of neuron that transmits visual information from the eye to the brain. The investigation was prompted by observations by Marsh-Armstrong while studying a mouse model of glaucoma that protein products from the retina were accumulating in the [optic nerve head](#)

(ONH) just behind the eye.

Using a combination of advanced microscopy and molecular techniques developed at the Ellisman and Marsh-Armstrong laboratories, they discovered that damaged mitochondria in retinal ganglion cells were shed at the ONH where ganglion cell axons exit the eye to form the [optic nerve](#) leading to the brain. These mitochondria were taken up and degraded by adjacent astrocytes, the most abundant form of glial cell in the vertebrate nervous system and the only cell which bridges between nerve cells and the brain's blood supply.

The discovery refutes the common assumption that all cells internally isolate, degrade and remove damaged materials – a process generally known as autophagy (Greek for "to self-eat"). When the process involves mitochondria, it's called mitophagy. The process described by Marsh-Armstrong, Ellisman and colleagues has been dubbed "transmitophagy."

The surprising findings still leave questions to be answered. For example, do the [mitochondria](#) removed at the ONH originate only from the population residing in the long conducting nerve fibers from the eye to the brain or are some actively transported from the retina itself?

Ellisman said the findings could potentially improve understanding – and perhaps eventually the treatment – of diverse disorders. "Mitochondria play prominent roles in the health of axons, which are fundamental to connecting neurons and transmitting information. It should be a priority to further explore what happens in transmitophagy and whether defects in this phenomenon contribute to neuronal dysfunction or disease."

**More information:** Transcellular degradation of axonal mitochondria, PNAS, [www.pnas.org/cgi/doi/10.1073/pnas.1404651111](http://www.pnas.org/cgi/doi/10.1073/pnas.1404651111)

Provided by University of California - San Diego

Citation: Getting rid of old mitochondria: Some neurons turn to neighbors to help take out the trash (2014, June 16) retrieved 4 May 2024 from

<https://medicalxpress.com/news/2014-06-mitochondria-neurons-neighbors-trash.html>

This document is subject to copyright. Apart from any fair dealing for the purpose of private study or research, no part may be reproduced without the written permission. The content is provided for information purposes only.