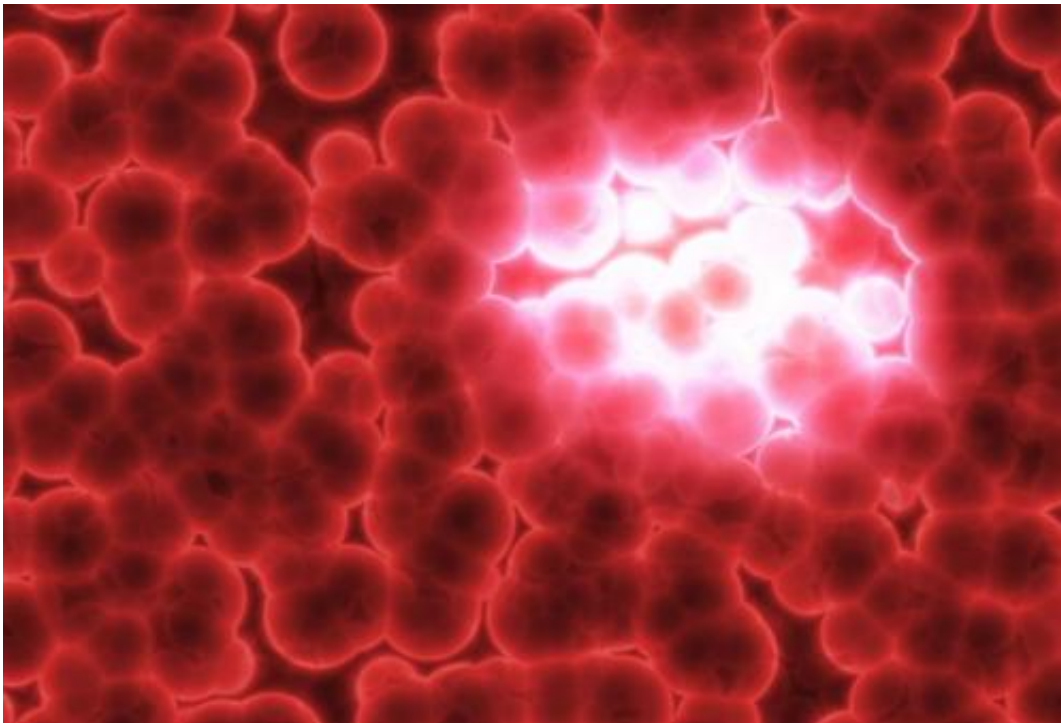


# Decoding the emergence of metastatic cancer stem cells

October 31 2014

---



This is an artist's depiction of the dangers of metastasis, the process by which cancer cells migrate and establish tumors throughout the body. A new Rice University-led study has revealed a common pattern in the decision-making circuitry that cancer cells use to initiate both migration and new tumor formation. Credit: [thinkstockphotos.com/Rice University](http://thinkstockphotos.com/Rice%20University)

In the first study of its kind, Rice University researchers have mapped how information flows through the genetic circuits that cause cancer cells to become metastatic. The research reveals a common pattern in the

decision-making that allows cancer cells to both migrate and form new tumors. Researchers say the commonality may open the door to new drugs that interfere with the genetic switches that cancer must flip to form both cancer stem cells and circulating tumor cells—two of the main players in cancer metastasis.

"Cells have genetic circuits that are used to switch certain behaviors on and off," said biophysicist Eshel Ben-Jacob, a senior investigator at Rice's Center for Theoretical Biological Physics and co-author of a new study in the *Journal of the Royal Society Interface*. "Though some of the circuits for metastasis have been mapped, this is the first study to examine how cancer uses two of those circuits, in concert, to produce not just [cancer stem cells](#), but also dangerous packs of hybrid stem-like-cells that travel in groups to colonize other parts of the body."

Metastasis—the spread of cancer between organs—causes more than 90 percent of cancer deaths, but not all tumor cells can metastasize. The switch that many cancer cells use to become metastatic is the circuit that governs the epithelial-to-mesenchymal transition, or EMT. The EMT, an important feature in embryonic development and wound healing, allows cells to revert back along their developmental path and take on certain stem-like features that allow them to form new tissues and repair tissue damage.

Cancer cells co-opt the EMT process to allow tumor cells to break away and migrate to other parts of the body. Once there, the cells reverse the switch and transition back to [epithelial cells](#) to form a new colony.

In 2013, Ben-Jacob and Rice colleagues José Onuchic, Herbert Levine, Mingyang Lu and Mohit Kumar Jolly discovered that cancer uses the EMT circuitry as a three-way switch. Rather than simply flipping between the epithelial (E) and mesenchymal (M) states, the study showed that cancer had the ability to form E-M hybrids.

In the new study, Ben-Jacob, Levine, Jolly and Lu teamed with Rice graduate student Bin Huang and the University of Texas MD Anderson Cancer Center's Sendurai Mani to examine the interaction between the three-way EMT switch and a second, well-documented genetic switch that gives rise to cancer [stem cells](#) (CSCs). The research showed that the CSC circuit also operates as a three-way switch. In addition, the study found "significant correspondence" between the operation of the two switches, which suggests a mechanism that would confer "stemness" on hybrid E-M cancer cells that are known to travel in packs called circulating [tumor cells](#) (CTCs).

"According to the prevailing cancer dogma, cells that become fully mesenchymal pose the highest risk of metastasis progression," said Ben-Jacob, adjunct professor of biosciences at Rice. "Indeed, most diagnostic and therapeutic efforts to date have focused on targeting these cells. Notwithstanding that the hybrid cells are more versatile and have the advantage of moving together as a group, they have been assumed to be less harmful than their fully mesenchymal cousins. Our discovery—that squads of hybrid [cancer cells](#) also have 'stemness' characteristics—challenges this picture."

Jolly, the study's first author, said, "By applying a physics-based approach to understand the dynamics of cancer decision-making, we were able to explain a number of recent experimental observations, including some that seemed contradictory."

Mani, who first showed in 2008 that the EMT switch could produce cells with stem-like properties, said, "Being stem-like means that cells can easily differentiate back to epithelial as well as change their character to found a whole colony of specialist cells that work together. The finding of 'stemness' in E-M hybrids means that those cells will have a better chance to form metastases because they can more easily adapt to newly encountered conditions and become E [cells](#) easily at the metastatic niche

in a distant organ."

Levine, co-director of Rice's Center for Theoretical Biological Physics, said the coupling between the two switches shows that two seemingly independent and distinct cellular programs—one that drives migration and a second that drives adaptation and tumorigenesis—are linked.

"The existence of a link suggests that we may be able to simultaneously target both processes with innovative new therapies," he said.

Levine said the new study validates the center's research approach, which relies on a combination of skills from both the physical sciences and [cancer](#) biology.

"It is also an excellent example of what can happen thanks to the center's symbiotic efforts with world-class research partners in the Texas Medical Center," Levine said.

**More information:** *Interface:* [rsif.royalsocietypublishing.org ...  
01/20140962.abstract](https://rsif.royalsocietypublishing.org/doi/10.1098/rsif.2014.0962)

Provided by Rice University

Citation: Decoding the emergence of metastatic cancer stem cells (2014, October 31) retrieved 18 April 2024 from <https://medicalxpress.com/news/2014-10-decoding-emergence-metastatic-cancer-stem.html>

This document is subject to copyright. Apart from any fair dealing for the purpose of private study or research, no part may be reproduced without the written permission. The content is provided for information purposes only.