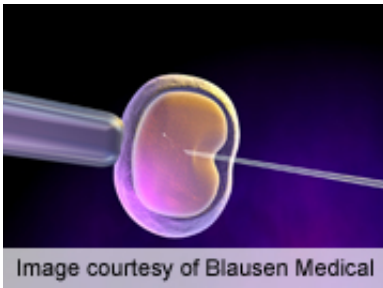


# Training model protects embryo transfer success rates

November 4 2014

---



(HealthDay)—In an academic practice, a training model using ultrasound-guided embryo transfer (ET) results in similar live birth rates for reproductive endocrinology and infertility (REI) fellows and attending physicians, according to research published in the November issue of the *American Journal of Obstetrics & Gynecology*.

Jennifer L. Eaton, M.D., of the Duke University School of Medicine in Durham, N.C., and colleagues conducted a retrospective cohort study of women who underwent their first day-3, fresh, non-donor ET, between Oct. 1, 2005, and April 1, 2011, by an attending physician (760 patients) or a REI fellow (104 patients). ET was performed with the afterload method under ultrasound guidance.

The researchers found that, following ET, the live birth rate was 31

percent for the attending physician group and 34 percent for the REI fellow group ( $P = 0.65$ ). After adjustment for potential confounding variables, no significant association was found between the type of physician performing ET and live birth rate.

"Our findings suggest that with appropriate supervision and consistent technique, REI fellows may obtain hands-on experience in ET without compromising a program's success rates," the authors write.

**More information:** [Abstract](#)  
[Full Text \(subscription or payment may be required\)](#)

Copyright © 2014 [HealthDay](#). All rights reserved.

Citation: Training model protects embryo transfer success rates (2014, November 4) retrieved 24 April 2024 from <https://medicalxpress.com/news/2014-11-embryo-success.html>

<p>This document is subject to copyright. Apart from any fair dealing for the purpose of private study or research, no part may be reproduced without the written permission. The content is provided for information purposes only.</p>
--