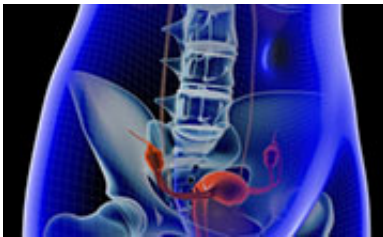


# Soy food, isoflavone intake not linked to endometrial cancer

February 7 2015

---



Soy food/isoflavone intake is not associated with endometrial cancer risk in Japanese women, according to a study published in the February issue of *BJOG: An International Journal of Obstetrics & Gynaecology*.

(HealthDay)—Soy food/isoflavone intake is not associated with endometrial cancer risk in Japanese women, according to a study published in the February issue of *BJOG: An International Journal of Obstetrics & Gynaecology*.

Sanjeev Budhathoki, M.D., from the National Cancer Center in Tokyo, and colleagues conducted a prospective cohort study involving 49,121 women aged 45 to 74 years to examine the correlation between soy food/isoflavone intake and endometrial [cancer risk](#). Intake of soy foods and other covariates were assessed by a self-administered food frequency questionnaire, completed in 1995 to 1998. Participants responded to a five-year follow-up survey questionnaire.

During an average follow-up of 12.1 years, the researchers identified 112 newly diagnosed endometrial cancer cases. There was no correlation between energy-adjusted intakes of soy food and isoflavone and the risk of endometrial cancer. Per 25 g/day increase in the intake of soy food, the multivariate-adjusted hazard ratio was 1.02 (95 percent confidence interval, 0.94 to 1.1); for an increase of 15 mg/day in isoflavone intake, the corresponding hazard ratio was 1.01 (95 percent confidence interval, 0.84 to 1.22).

"In this population-based [prospective cohort study](#) of Japanese women, we observed no evidence of a protective association between soy food or isoflavone intake and [endometrial cancer](#) risk," the authors write.

**More information:** [Abstract](#)

[Full Text \(subscription or payment may be required\)](#)

[Editorial \(subscription or payment may be required\)](#)

Copyright © 2015 [HealthDay](#). All rights reserved.

Citation: Soy food, isoflavone intake not linked to endometrial cancer (2015, February 7)  
retrieved 3 May 2024 from

<https://medicalxpress.com/news/2015-02-soy-food-isoflavone-intake-linked.html>

This document is subject to copyright. Apart from any fair dealing for the purpose of private study or research, no part may be reproduced without the written permission. The content is provided for information purposes only.