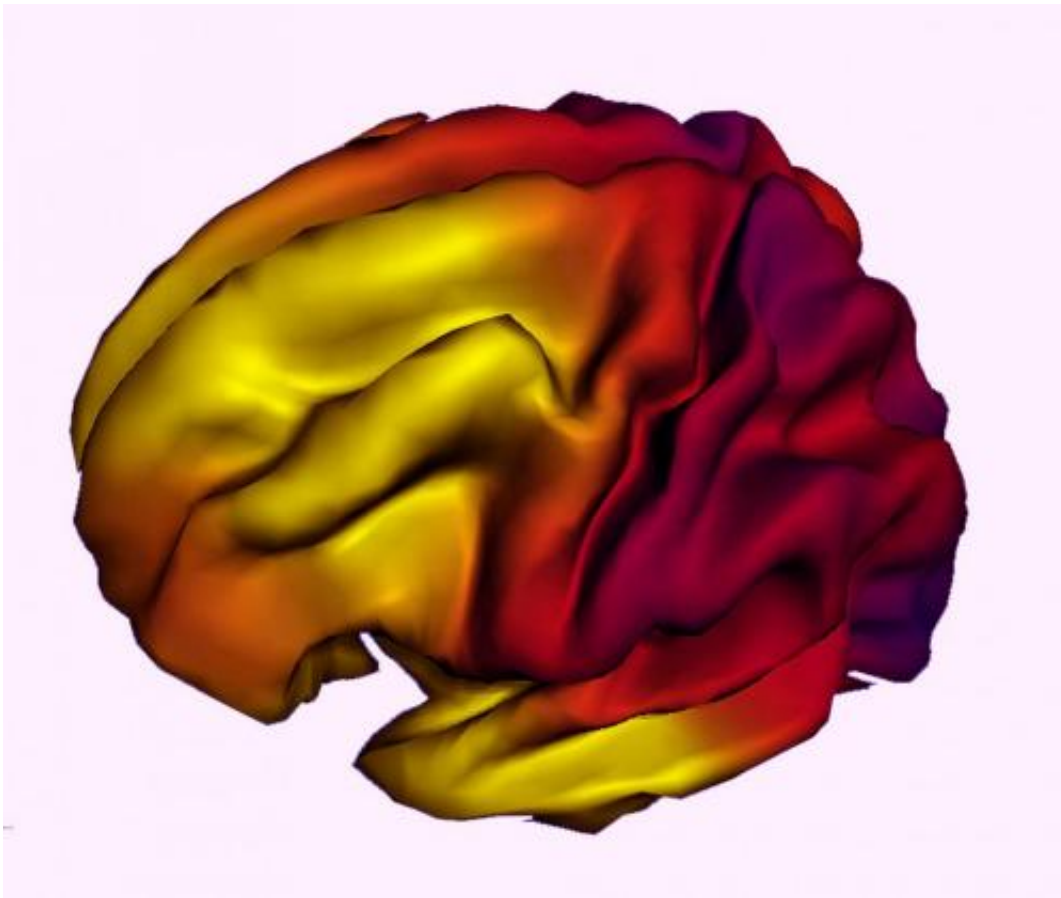


Family income, parental education related to brain structure in children and adolescents

March 30 2015



A composite image showing the relationship between brain surface expansion and age in children 3-20 years. Credit: The Saban Research Institute of Children's Hospital Los Angeles

Characterizing associations between socioeconomic factors and

children's brain development, a team including investigators from nine universities across the country reports correlative links between family income and brain structure. Relationships between the brain and family income were strongest in the lowest end of the economic range - suggesting that interventional policies aimed at these children may have the largest societal impact. The study, led by researchers at The Saban Research Institute of Children's Hospital Los Angeles and Columbia University Medical Center, will be published in the early online edition of the journal *Nature Neuroscience* on March 30.

"While in no way implying that a child's socioeconomic circumstances lead to immutable changes in [brain](#) development or cognition, our data suggest that wider access to resources likely afforded by the more affluent may lead to differences in a child's [brain structure](#)," said Elizabeth Sowell, PhD, director of the Developmental Cognitive Neuroimaging Laboratory, part of the Institute for the Developing Mind at CHLA. Sowell is also professor of Pediatrics at Keck School of Medicine of the University of Southern California.

In the largest study of its kind to date, the researchers looked at 1,099 typically developing individuals between the ages of 3 and 20 years, part of the multi-site Pediatric Imaging, Neurocognition and Genetics (PING) study. Associations between [socioeconomic factors](#) (including parent education and [family income](#)) and measurements of surface area of the brain were drawn from demographic and developmental history questionnaires, as well as high-resolution brain MRIs. Statistics - controlled for education, age and genetic ancestry - showed that income was nonlinearly associated with brain surface area, and that income was more strongly associated with the brain than was parental educational attainment.

"Specifically, among children from the lowest-income families, small differences in income were associated with relatively large differences

in surface area in a number of regions of the brain associated with skills important for academic success, " said first author Kimberly G. Noble, MD, PhD, assistant professor of pediatrics and director of the Neurocognition, Early Experience and Development (NEED) Lab of Columbia University Medical Center. Noble is also an associate professor of Neuroscience and Education at Teachers College, Columbia University. Conversely, among children from higher-income families, incremental increases in income level were associated with much smaller differences in surface area. Higher income was also associated with better performance in certain cognitive skills - cognitive differences that could be accounted for, in part, by greater brain surface area.

"Family [income](#) is linked to factors such as nutrition, health care, schools, play areas and, sometimes, air quality," said Sowell, adding that everything going on in the environment shapes the developing brain. "Future research may address the question of whether changing a child's environment - for instance, through social policies aimed at reducing family poverty - could change the trajectory of [brain development](#) and cognition for the better."

More information: *Nature Neuroscience* , [DOI: 10.1038/nn.3983](https://doi.org/10.1038/nn.3983)

Provided by Children's Hospital Los Angeles

Citation: Family income, parental education related to brain structure in children and adolescents (2015, March 30) retrieved 20 March 2024 from <https://medicalxpress.com/news/2015-03-family-income-parental-brain-children.html>

This document is subject to copyright. Apart from any fair dealing for the purpose of private study or research, no part may be reproduced without the written permission. The content is provided for information purposes only.