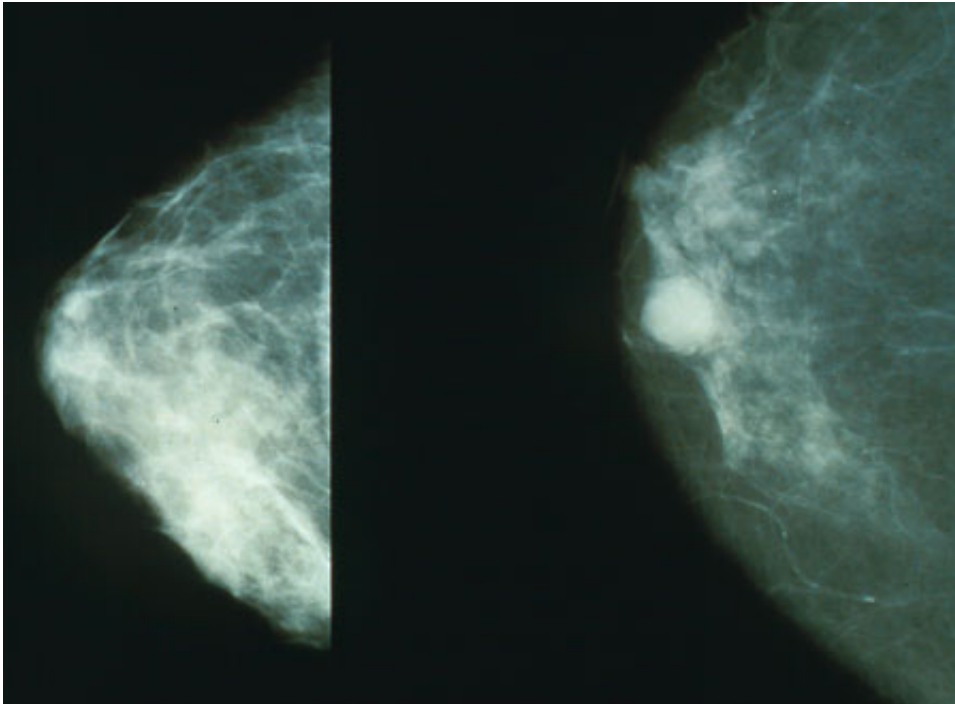


# New blood test can predict future breast cancer

April 15 2015

---



Mammograms showing a normal breast (left) and a breast with cancer (right).  
Credit: Public Domain

According to the World Health Organization, breast cancer is the most common cancer in women both in the developed and less developed world, and in the long term the scientists hope that the new method will lead to better prevention and early treatment of the disease.

"The method is better than mammography, which can only be used when

the disease has already occurred. It is not perfect, but it is truly amazing that we can predict [breast cancer](#) years into the future," said Rasmus Bro, a professor of chemometrics in the Department of Food Science at University of Copenhagen. He stressed the method has been tested and validated only for a single population (cohort) and needs to be validated more widely before it can be used practically.

## **A new way of detecting diseases**

Nevertheless, the method could create a paradigm shift in early diagnosis of breast cancer as well as other diseases.

"The potential is that we can detect a disease like breast cancer much earlier than today. This is important as it is easier to treat if you discover it early. In the long term, it will probably also be possible to use similar models to predict other diseases," said Lars Ove Dragsted, a professor of biomedicine in the Department of Nutrition, Exercise and Sports.

The method has been developed in cooperation with the Danish Cancer Society and the study was recently published in *Metabolomics*.

## **Food science showed the way**

The researchers' approach to developing the method was adopted from [food science](#), where it is used for control of complex industrial processes. Basically, it involves handling and analysing huge amounts of biological data in a holistic and explorative way. The researchers analysed all compounds a blood sample contains instead of - as is often done in health and medical science - examining what a single biomarker means in relation to a specific disease.

"When a huge amount of relevant measurements from many individuals

is used to assess health risks - here breast cancer - it creates very high quality information. The more measurements our analyses contain, the better the model handles complex problems," continued Professor Rasmus Bro.

The model does not reveal anything about the importance of the single biomarkers in relation to breast cancer, but it does reveal the importance of a set of biomarkers and their interactions.

"No single part of the pattern is actually necessary nor sufficient. It is the whole pattern that predicts the cancer," said Professor Dragsted.

A metabolic blood profile describes the amounts of all compounds (metabolites) in our blood. The scientists measured metabolic blood profiles for this project. When you are in a pre-cancer state, the pattern for how certain metabolites are processed apparently changes.

While a mammography can detect newly developed breast cancer with a sensitivity of 75 per cent, the new metabolic blood profile is able to predict the likelihood of a woman developing breast cancer within the next two to five years with a sensitivity of 80 per cent.

## **Based on population study**

The research is based on a population study of 57,000 people followed by the Danish Cancer Society over 20 years. The participants were first examined in 1994-96, during which time their weight and other measurements were recorded and they answered a questionnaire. They also provided a blood sample that was stored in liquid nitrogen.

The scientists used the 20-year-old blood samples and other available data from 400 women who were healthy when they were first examined but who were diagnosed with breast cancer two to seven years after

providing the first sample, and from 400 women who did not develop breast cancer.

The method was also used to test a different dataset of women examined in 1997. Predictions based on the new set of data matched the first dataset, which indicates the validity of the model.

Provided by University of Copenhagen

Citation: New blood test can predict future breast cancer (2015, April 15) retrieved 6 May 2024 from <https://medicalxpress.com/news/2015-04-blood-future-breast-cancer.html>

<p>This document is subject to copyright. Apart from any fair dealing for the purpose of private study or research, no part may be reproduced without the written permission. The content is provided for information purposes only.</p>
--