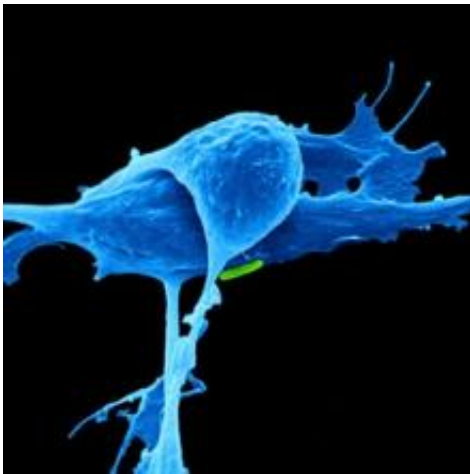


Body's cancer defences hijacked to make pancreatic and lung cancers more aggressive

April 2 2015



Cancer Research UK scientists have discovered that a vital self-destruct switch in cells is hijacked - making some pancreatic and non small cell lung cancers more aggressive, according to research published in *Cancer Cell* today.

The team, from the Cancer Research UK Centre at the UCL (University College London) Cancer Institute, found that mutations in the KRAS gene interferes with protective self-destruct switches, known as TRAIL receptors, which usually help to kill potentially cancerous cells.

The research, carried out in [cancer cells](#) and mice, shows that in cancers

with faulty versions of the KRAS gene these TRAIL receptors actually help the [cancer](#) cells to grow and spread to new areas in the body.

These KRAS faults occur in 95 per cent of pancreatic cancers and 30 per cent of non small cell lung cancers.

Professor Henning Walczak, lead researcher of the study and scientific director of the Cancer Research UK-UCL Centre, said: "Our research has unveiled a new strategy used by some pancreatic and non small cell lung cancers to overcome our body's natural defences against cancer. By understanding the faults in these cancers we think we can develop more tailored treatments, which could one day provide urgently-needed options for patients with these types of pancreatic and non small cell lung cancers."

Each year in Great Britain 32,500 people are diagnosed with [non small cell lung cancer](#) and around 8,600 people are diagnosed with [pancreatic cancer](#). Survival for these cancers has not shown much improvement for 40 years.

Nell Barrie, senior science information manager at Cancer Research UK, said: "Sadly survival from pancreatic and lung cancers remains far too low, partly because these cancers are very difficult to treat once they have spread.

"We urgently need better treatments, so it's vital to delve deeper into the molecular workings of these cancers to find ways to combat them. This research may one day help us find a way to block cancer spread, which would be a vital step to save more lives."

More information: von Karstedt et al. Cancer cell-autonomous TRAIL-R signalling promotes KRAS-driven cancer progression, invasion and metastasis. *Cancer Cell*. [DOI: 10.1016/j.ccell.2015.02.014](https://doi.org/10.1016/j.ccell.2015.02.014)

Provided by Cancer Research UK

Citation: Body's cancer defences hijacked to make pancreatic and lung cancers more aggressive (2015, April 2) retrieved 29 April 2024 from <https://medicalxpress.com/news/2015-04-body-cancer-defences-hijacked-pancreatic.html>

This document is subject to copyright. Apart from any fair dealing for the purpose of private study or research, no part may be reproduced without the written permission. The content is provided for information purposes only.