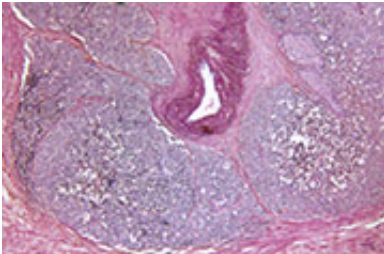


Second primaries for over 25 percent with metastatic prostate cancer

April 23 2015



Microscopic view of prostate cancer

(HealthDay)—More than one-quarter of patients with metastatic prostate cancer present with a synchronous second primary malignancy, according to a review published in the April issue of *The Journal of Urology*.

Kyo Chul Koo, M.D., Ph.D., from the Yonsei University College of Medicine in Seoul, South Korea, and colleagues conducted a retrospective record review of 582 consecutive patients with [prostate cancer](#) diagnosed with metastasis. The authors examined the prognostic impact of a synchronous second primary malignancy, defined as a cytologically or histologically proven solid malignancy, on overall survival.

The researchers found that 28.1 percent of patients had a synchronous

second primary malignancy, of which the most prevalent types were colorectal (9.1 percent), stomach (7.3 percent), and lung (7.1 percent) cancers. During a median follow-up of 34.1 months, the rate of overall survival was significantly higher for patients without a synchronous secondary primary malignancy versus those with lung or [stomach cancer](#). Outcomes were comparable for men without a second malignancy and for those with [colorectal cancer](#). Independent predictors of overall mortality included clinical stage T4 or greater, American Society of Anesthesiologists score 1 or greater, and lung or stomach cancer.

"A substantial proportion of patients with [metastatic prostate cancer](#) present with a synchronous second primary malignancy," the authors write. "Definitive therapy targeting prostate cancer may confer a limited survival benefit in patients with synchronous lung or stomach cancer."

More information: [Abstract](#)
[Full Text \(subscription or payment may be required\)](#)

Copyright © 2015 [HealthDay](#). All rights reserved.

Citation: Second primaries for over 25 percent with metastatic prostate cancer (2015, April 23) retrieved 11 May 2024 from <https://medicalxpress.com/news/2015-04-primaries-percent-metastatic-prostate-cancer.html>

<p>This document is subject to copyright. Apart from any fair dealing for the purpose of private study or research, no part may be reproduced without the written permission. The content is provided for information purposes only.</p>
--