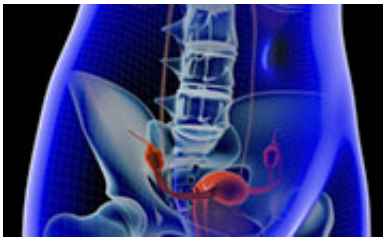


Bleeding complications up with multicompartment mesh removal

May 20 2015



(HealthDay)—For women undergoing vaginal mesh removal, bleeding complications are higher for removal from multiple vaginal compartments versus a single vaginal compartment, according to research published May 6 in *Obstetrics & Gynecology*.

Stephanie D. Pickett, M.D., from the University of Oklahoma Health Sciences Center in Oklahoma City, and colleagues conducted a retrospective review to examine perioperative [complications](#) of [mesh](#) removal performed in the operating room. The authors compared the morbidity associated with single-compartment mesh removal (326 patients) versus removal from multiple vaginal compartments (48 patients) during a 75-month period.

The researchers found that pain, dyspareunia, mesh exposure, and voiding dysfunction were indications for mesh removal (63, 57, 54, and

39 percent, respectively). Mesh removed had a mean length of 4 cm. Estimated blood loss was approximately three times higher for multicompartment [surgery](#) versus single-compartment surgery (P

"When removing mesh materials, multiple-compartment surgery carries a greater risk of a bleeding morbidity compared to single-compartment surgery," the authors write. "This information will supplement the knowledge of the consulting surgeon as to the best way to manage and plan mesh removal surgery."

One author disclosed financial ties to the medical device and biotechnology industries.

More information: [Full Text \(subscription or payment may be required\)](#)

Copyright © 2015 [HealthDay](#). All rights reserved.

Citation: Bleeding complications up with multicompartment mesh removal (2015, May 20) retrieved 6 May 2024 from <https://medicalxpress.com/news/2015-05-complications-multicompartment-mesh.html>

<p>This document is subject to copyright. Apart from any fair dealing for the purpose of private study or research, no part may be reproduced without the written permission. The content is provided for information purposes only.</p>
--