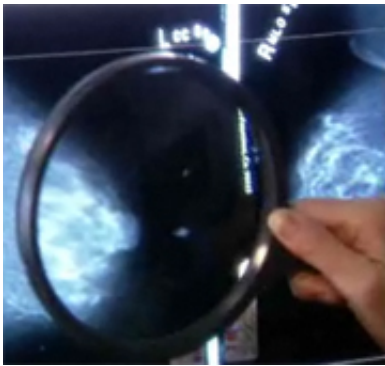


## Adding benign breast dz to risk model may boost preventive care

September 25 2015

---



(HealthDay)—Greater numbers of high-risk women eligible for primary prevention of breast cancer are identified by incorporating benign breast disease (BBD) diagnoses into the Breast Cancer Surveillance Consortium (BCSC) risk model, according to a study published online Aug. 17 in the *Journal of Clinical Oncology*.

Jeffrey A. Tice, M.D., from the University of California, San Francisco, and colleagues developed and validated a competing-[risk model](#) using 2000 to 2010 Surveillance, Epidemiology, and End Results data for breast cancer incidence and 2010 vital statistics to adjust for the competing risk of death.

The researchers found that of the 1,135,977 women (age 35 to 74 years)

undergoing mammography with no history of breast cancer, 17 percent had a prior breast biopsy. Invasive [breast cancer](#) was diagnosed in 17,908 women over a mean follow-up of 6.9 years. Risk was slightly over-predicted using the BCSC BBD model (expected-to-observed ratio, 1.04) and had modest discriminatory accuracy (area under the receiver operator characteristic curve, 0.665). Adding BBD to the model increased the proportion of women with proliferative findings, with an estimated five-year risk of 3 percent or higher increasing from 9.3 to 27.8 percent (P

"Greater numbers of high-risk women eligible for [primary prevention](#) after BBD diagnosis are identified using the BCSC BBD model," the authors write.

**More information:** [Abstract](#)  
[Full Text](#)

Copyright © 2015 [HealthDay](#). All rights reserved.

Citation: Adding benign breast dz to risk model may boost preventive care (2015, September 25) retrieved 27 June 2024 from <https://medicalxpress.com/news/2015-09-adding-benign-breast-dz-boost.html>

<p>This document is subject to copyright. Apart from any fair dealing for the purpose of private study or research, no part may be reproduced without the written permission. The content is provided for information purposes only.</p>
--