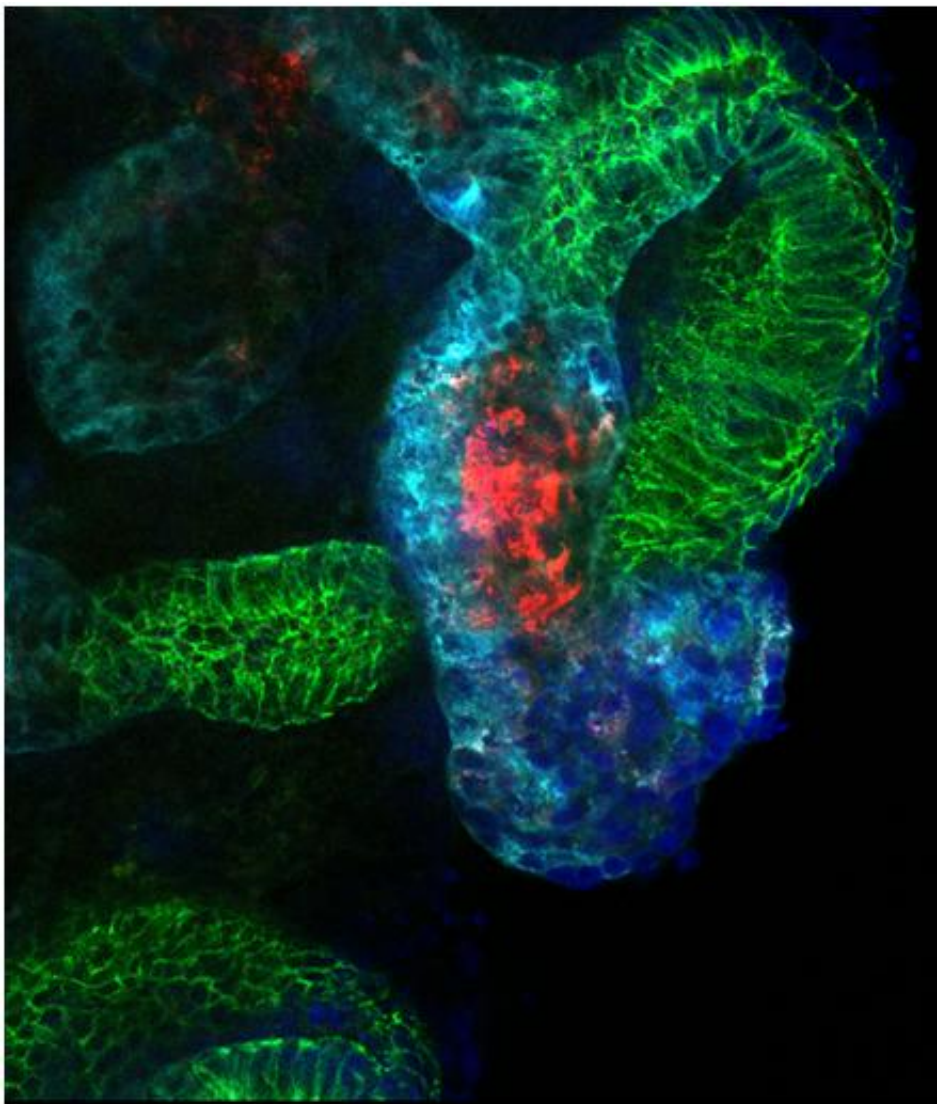


# Investigators create complex kidney structures from human stem cells derived from adults

October 16 2015

---



Researchers modeled kidney development and injury in kidney organoids

(shown here), demonstrating that the organoid culture system can be used to study mechanisms of human kidney development and toxicity. Credit: Ryuji Morizane, Brigham and Women's Hospital

Investigators at Brigham and Women's Hospital (BWH) and the Harvard Stem Cell Institute (HSCI) have established a highly efficient method for making kidney structures from stem cells that are derived from skin taken from patients. The kidney structures formed could be used to study abnormalities of kidney development, chronic kidney disease, the effects of toxic drugs, and be incorporated into bioengineered devices to treat patients with acute and chronic kidney injury. In the longer term, these methods could hasten progress toward replacing a damaged or diseased kidney with tissue derived from a patient's own cells. These results were published in *Nature Biotechnology* this week.

"Kidneys are the most commonly transplanted organs, but demand far outweighs supply," said co-corresponding author Ryuji Morizane, MD, PhD, associate biologist in BWH's Renal Division. "We have converted skin cells to stem cells and developed a highly efficient process to convert these stem cells into kidney structures that resemble those found in a normal human kidney. We're hopeful that this finding will pave the way for the future creation of kidney tissues that could function in a patient and eliminate the need for transplantation from a donor."

Chronic [kidney disease](#) (CKD) affects 9 to 11 percent of the U.S. adult population and is a serious public health problem worldwide. Central to the progression of CKD is the gradual and irreversible loss of nephrons, the individual functional units of the kidney. Patients with end-stage kidney disease benefit from treatments such as dialysis and [kidney transplantation](#), but these approaches have several limitations, including the limited supply of compatible organ donors.

While the human kidney does have some capacity to repair itself after injury, it is not able to regenerate new nephrons. In previous studies, researchers have successfully differentiated [stem cells](#) into heart, liver, pancreas or nerve cells by adding certain chemicals, but [kidney cells](#) have proved challenging. Using normal [kidney development](#) as a roadmap, the BWH investigators developed an efficient method to create kidney precursor cells that self assemble into structures which mimic complex structures of the kidney. The research team further tested these organoids - three-dimensional organ structures grown in the lab - and found that they could be used to model kidney development and susceptibility of the kidney tissue to therapeutic drug toxicity. The kidney structures also have the potential to facilitate further studies of how abnormalities occur as the human kidney develops in the uterus and to establish models of disease where they can be used to test new therapies.

"This new finding could hasten progress to model human disease, find new therapeutic agents, identify patient-specific susceptibility to toxicity of drugs and may one day result in replacement of human kidney tissue in patients with [kidney](#) disease from [cells](#) derived from that same patient," said author Joseph V. Bonventre, chief of BWH's Renal Division and Chief of BWH's Division of Biomedical Engineering. "This approach is especially attractive because the tissues obtained would be 'personalized' and, because of their genetic identity to the patient from whom they were derived, this approach may ultimately lead to tissue replacement without the need for suppression of the immune system."

**More information:** Ryuji Morizane et al. Nephron organoids derived from human pluripotent stem cells model kidney development and injury, *Nature Biotechnology* (2015). [DOI: 10.1038/nbt.3392](https://doi.org/10.1038/nbt.3392)

Provided by Brigham and Women's Hospital

Citation: Investigators create complex kidney structures from human stem cells derived from adults (2015, October 16) retrieved 25 April 2024 from <https://medicalxpress.com/news/2015-10-complex-kidney-human-stem-cells.html>

This document is subject to copyright. Apart from any fair dealing for the purpose of private study or research, no part may be reproduced without the written permission. The content is provided for information purposes only.