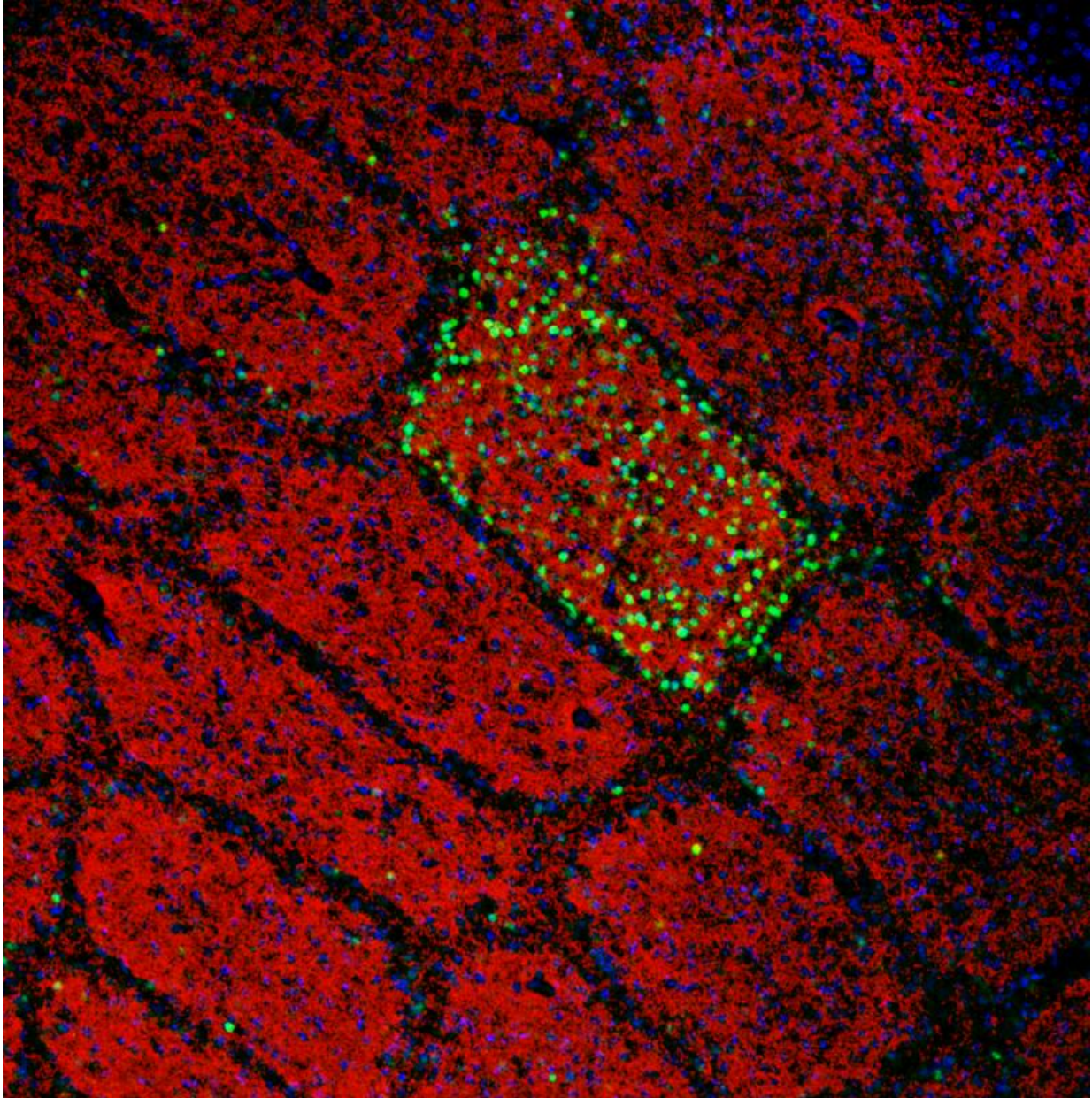


Mapping face sensation in the brainstem

October 23 2015



The spatial arrangement of whiskers on the face is maintained in the brain,

where whiskers are faithfully mapped as spatially ordered neuronal modules – first in the brainstem (where they are known as barrelettes), then in the thalamus (barreloids) and finally in the cortex (barrels). Red: Barrels in the cortex. Green: Detection of the touch sensation only from the C2 whisker on the face.

Filippo Rijli and his group at the FMI have shown how the formation of a sensory topographic map in the brainstem is controlled by a single transcription factor, thus shedding light on a decades-old question in neuroscience. The expression of *Hoxa2* in brainstem sensory neurons is sufficient to establish a topographic map in which each whisker on the face is represented by a neuronal module (barrelette), permitting accurate mapping of facial sensory input to the brain.

Filippo Rijli's research project started, in a sense, before he was even born, with experiments performed more than 60 years ago by the neurosurgeon Wilder Penfield. To minimize the adverse effects of epilepsy surgery, Penfield electrically stimulated the brain of conscious patients so as to determine the functions of particular brain areas. In 1951, these experiments allowed him to produce a sensory map, linking clearly defined areas of the cortex to tactile sensations. The [sensory cortex](#) was thus shown to contain a topographic (or somatotopic) map of the surface of the body. For instance, areas responsible for tactile input from the hand are adjacent to areas responsible for the forearm and the fingers. Over the years, it has become clear that, during development, similar maps are first generated at sub-cortical levels – in the brainstem and thalamus – and are then relayed to the cortex. These maps make it possible to determine automatically which part of the body a sensation such as touch, pain or temperature originates from. Sensory representations of the body surface are known to be present in all vertebrates. However, it has remained unclear how these representations (known in humans as the sensory homunculus) are formed in the first

place.

Filippo Rijli and his team at the FMI have now identified a protein that controls the formation of such a map. In a paper published in *Cell Reports*, they describe how the transcription factor *Hoxa2* governs the formation of the mouse whisker map in the brainstem.

What fingers are to humans, whiskers are to the mouse. Through the whiskers, the mouse receives tactile information about the size, position and texture of objects in its environment during exploratory behavior. It has been known for about 40 years that a large portion of the somatosensory cortex in rodents is devoted to the representation of whiskers. Moreover, the spatial arrangement of whiskers on the face is maintained in the brain, where whiskers are faithfully mapped as spatially ordered neuronal modules – first in the brainstem (where they are known as barrelettes), then in the thalamus (barreloids) and finally in the cortex (barrels). These whisker maps are serially wired during development, allowing sensation to move from the face to the higher centers in the brain. However, the molecular mechanisms underlying the formation of whisker-related neuronal modules and their spatial organization are still poorly understood.

Ahmad Bechara, a postdoctoral fellow in the Rijli group, has now shown that the presence of *Hoxa2* early in development is sufficient by itself to define the area of the somatosensory brainstem targeted by upper jaw ("whisker") axons. Importantly, *Hoxa2* is also sufficient to organize the spatial arrangement of barrelettes. When expression of *Hoxa2* is forced into an adjacent area of the somatosensory brainstem which usually receives lower jaw axons, a barrelette map is formed in this area at the expense of sensory input from the lower jaw. Rijli explains: "Sensory neurons in the brainstem expressing *Hoxa2* are able to attract collaterals from whisker-related afferent axons, and order them topographically such that they can be further refined upon sensory experience into a

barrelette map." They do so by reorienting their dendrites – the branched extensions of nerve cells which make contact with the axon – towards the incoming axons.

Following the neuronal circuitry from the brainstem towards the thalamus, the scientists then showed that the *Hoxa2*-dependent barrelette map is the necessary template for the barreloid map in the thalamus. "Interestingly," says Rijli, "*Hoxa2* is sufficient to drive topographically directed axon targeting of barrelette neurons to the area of the thalamus that in turn generates the barreloid map. We found that, during development, this thalamic area also received axons relaying information not only from whiskers, but when the whiskers started to send sensory information to the brain via the *Hoxa2*-expressing neurons in the brainstem, those other connections were pruned so that the barreloid structure remained."

In a second set of experiments, carried out by Christophe Laumonnerie (a former student in the Rijli group) and Ahmad Bechara, and published in *Development*, it was additionally shown that the pattern of whiskers on the face is not sufficient to instruct the topographic [map](#) in the brain. In a mouse strain with whiskers growing also on the lower jaw, the axons of the peripheral neurons innervating the mandibular [whiskers](#) could not organize an additional barrelette pattern in the somatosensory brainstem. These findings nicely complement those described in the *Cell Reports* paper and support the idea that a whisker-related matching central pattern can only be induced in intrinsically specified neuronal subsets.

Rijli comments: "This is the first time that we have been able to identify a transcriptional mechanism that not only contributes to establish precise connectivity but also helps to build accurate spatial mapping of a sensation from a specific body part into the brain. We hope that this may provide the basis for a better understanding of neurodevelopmental disorders or aberrant sensations after injuries, such as phantom pain."

More information: Ahmad Bechara et al. Hoxa2 Selects Barrelette Neuron Identity and Connectivity in the Mouse Somatosensory Brainstem, *Cell Reports* (2015). [DOI: 10.1016/j.celrep.2015.09.031](https://doi.org/10.1016/j.celrep.2015.09.031)

C. Laumonnerie et al. Facial whisker pattern is not sufficient to instruct a whisker-related topographic map in the mouse somatosensory brainstem, *Development* (2015). [DOI: 10.1242/dev.128736](https://doi.org/10.1242/dev.128736)

Provided by Friedrich Miescher Institute for Biomedical Research

Citation: Mapping face sensation in the brainstem (2015, October 23) retrieved 26 April 2024 from <https://medicalxpress.com/news/2015-10-sensation-brainstem.html>

This document is subject to copyright. Apart from any fair dealing for the purpose of private study or research, no part may be reproduced without the written permission. The content is provided for information purposes only.