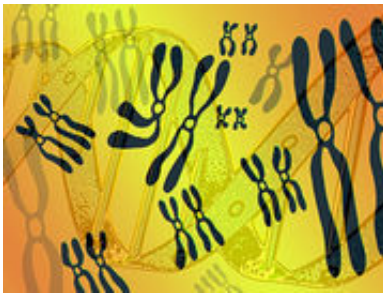


CYP2C19 polymorphism impacts response to PPI Tx in GERD

November 24 2015



(HealthDay)—CYP2C19 polymorphism impacts response to proton pump inhibitor (PPI) treatment in gastroesophageal reflux disease (GERD), with lower efficacy rates for rapid metabolizer (RM) genotypes, according to a study published online Nov. 18 in the *Journal of Gastroenterology and Hepatology*.

Hitomi Ichikawa, M.D., from the Hamamatsu University School of Medicine in Japan, and colleagues conducted a meta-analysis to examine whether the CYP2C19 RM genotype is a risk factor for GERD patients who are refractory to PPI therapy.

The researchers found that in intention-to-treat (ITT) and per-protocol analyses, the total efficacy rate of PPIs was 56.4 and 63.8 percent, respectively, for GERD, including [reflux esophagitis](#) (RE) and non-

erosive [reflux](#) disease. Between the CYP2C19 genotypes, there was significant variation in efficacy rates (ITT analysis: RMs, 52.2 percent; intermediate metabolizers, 56.7 percent; and poor metabolizers [PMs], 61.3 percent; $P = 0.047$). Compared with CYP2C19 PMs, RMs had an increased risk of being refractory to PPI therapy among RE patients (odds ratio, 1.661; $P = 0.040$).

"Individualized dosing regimen with PPIs based on CYP2C19 genotype might be a valid therapeutic strategy for overcoming insufficient gastric acid inhibition," the authors write.

More information: [Abstract](#)
[Full Text \(subscription or payment may be required\)](#)

Copyright © 2015 [HealthDay](#). All rights reserved.

Citation: CYP2C19 polymorphism impacts response to PPI Tx in GERD (2015, November 24)
retrieved 3 May 2024 from
<https://medicalxpress.com/news/2015-11-cyp2c19-polymorphism-impacts-response-ppi.html>

This document is subject to copyright. Apart from any fair dealing for the purpose of private study or research, no part may be reproduced without the written permission. The content is provided for information purposes only.