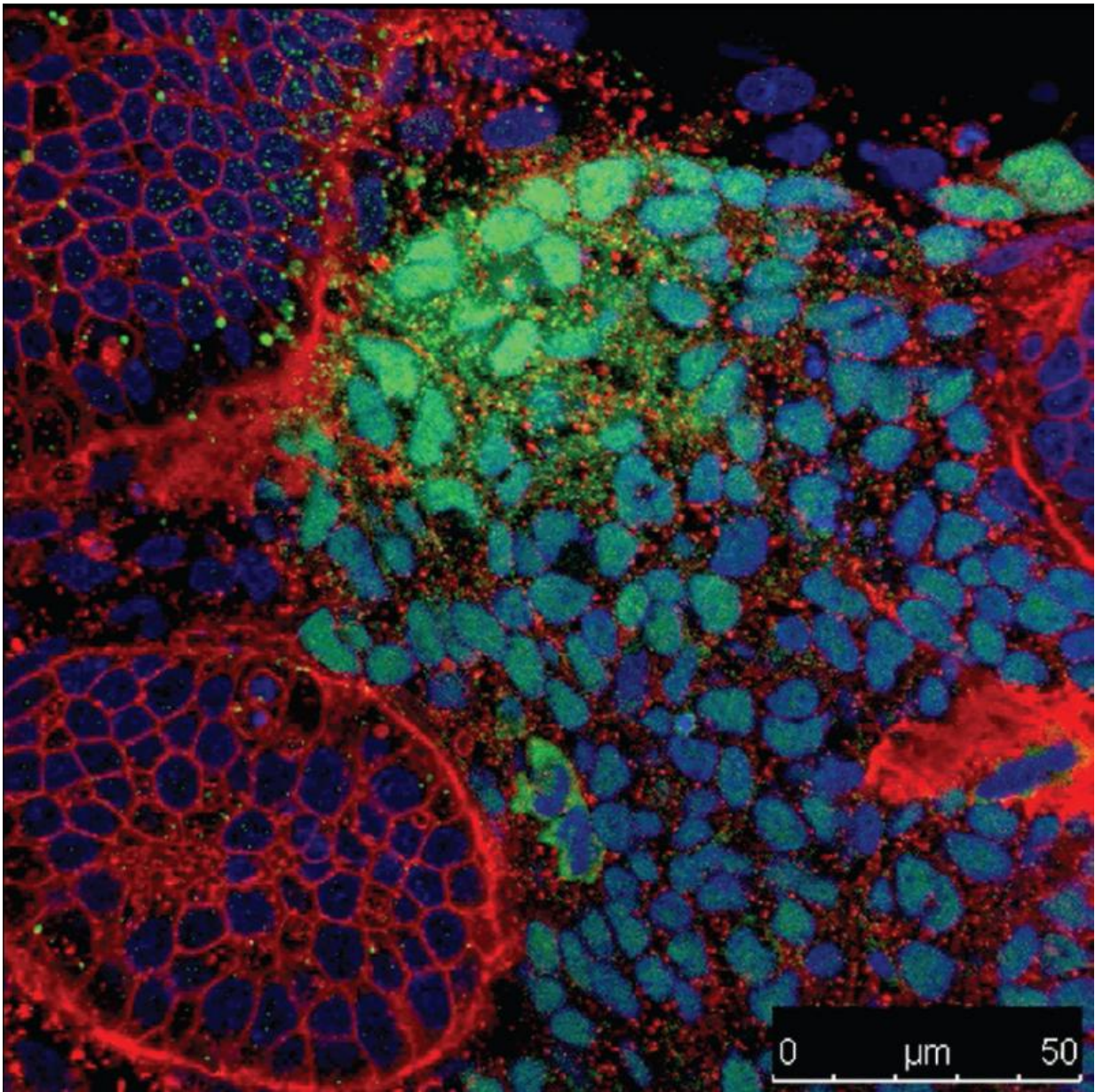


Novel stem cell line avoids risk of introducing transplanted tumors

November 10 2015



In this micrograph, embryonic rat kidney cell aggregates are colored red. Differentiated human cells incorporated into these aggregates are colored green. Blue marks DNA in all cells. Credit: UC San Diego Health

Human pluripotent stem cells (hPSC) can become any type of cell in the adult body, offering great potential in disease modeling, drug discovery and creating replacement cells for conditions ranging from cardiovascular to Alzheimer's disease.

But that promise comes with a risk: the possibility that transplanted hPSCs might also develop as unwanted tumors. In a new study published November 10, 2015 in the online journal *eLIFE*, researchers at University of California, San Diego School of Medicine describe a new "progenitor cell" capable of unlimited expansion and differentiation into mature kidney [cells](#), but without the risk of forming tumors.

"This work nicely complements recent advances in tissue engineering and the goal of rebuilding or recreating functional organs, such as what we've seen with the creation of 'mini-kidneys'," said senior author Karl Willert, PhD, associate professor in the Department of Cellular and Molecular Medicine at UC San Diego. "It represents a novel source of cells."

Willert, with co-corresponding author David Brafman, PhD, at Arizona State University, and colleagues engineered an in vitro microenvironment that permitted homogenous expansion of hPSC [progenitor cells](#) from the mesoderm - one of the three primary germ layers in early embryonic development. A germ layer is a primary layer of cells that form during embryogenesis. Progenitor cells are early descendants of stem cells, with more limited differentiation capacity.

Analyses showed that these newly created "mesoderm progenitors" lacked tumor-forming potential, but retained the capacity to differentiate into specific kinds of tissue, such as cells that comprise the adult kidney.

The researchers said the ability to generate expandable populations of progenitor cells with limited differentiation presents several advantages over the use of undifferentiated human stem cells:

First, cultures derived from the latter often harbor [undifferentiated cells](#) that retain the potential to seed tumor growth.

Second, development and manipulation of lineage-restricted progenitors is less elaborate. It's easier to create mature cell populations for research or therapeutic use.

Third, because progenitor cells are limited in what kind of cell they can be, they are less likely than [stem cells](#) to differentiate into an unwanted cell type.

"Our cells can serve as building blocks to generate kidneys that may one day be suitable for cell replacement and transplantation," said Willert. "I think such a therapeutic application is still a few years in the future, but engineered kidney tissue can serve as a powerful model system to study how the human kidney interacts with and filters drugs. Such an application would be of tremendous value to the pharmaceutical industry."

Willert noted that the progenitor cells developed are likely capable of differentiating into other cell types of the intermediate mesodermal lineage as well, most notably the germ line to generate eggs and sperm in a dish. "We have only characterized their potential to differentiate into cells that contribute to the kidney. We are now investigating to what extent these cells can generate other tissues and organs that derive from

intermediate mesoderm, including reproductive organs."

He said colleagues are also pursuing similar bioengineering-based approaches to generate other similar expandable progenitor cell populations capable of differentiation into mature cell types derived from other germ layers.

Provided by University of California - San Diego

Citation: Novel stem cell line avoids risk of introducing transplanted tumors (2015, November 10) retrieved 10 April 2024 from <https://medicalxpress.com/news/2015-11-stem-cell-line-transplanted-tumors.html>

<p>This document is subject to copyright. Apart from any fair dealing for the purpose of private study or research, no part may be reproduced without the written permission. The content is provided for information purposes only.</p>
--