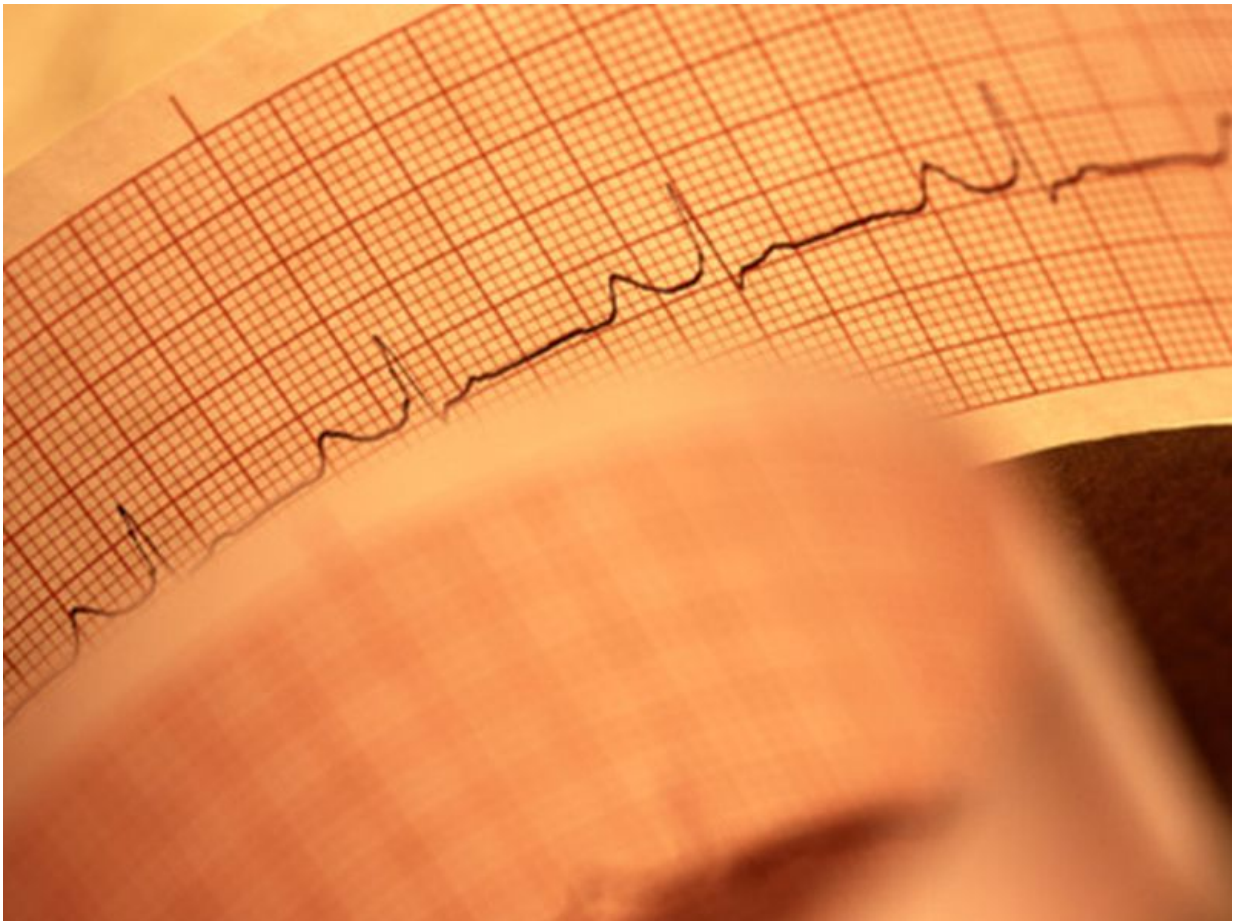


Cardiomyopathy etiology impacts catheter ablation outcomes

January 11 2016



(HealthDay)—For patients with atrial fibrillation (AF) and left

ventricular systolic dysfunction, cardiomyopathy etiology impacts long term outcomes of catheter ablation, according to a study published online Dec. 28 in the *Journal of Cardiovascular Electrophysiology*.

Sandeep Prabhu, M.B.B.S., from Alfred Hospital in Melbourne, Australia, and [colleagues](#) examined the impact of cardiomyopathy etiology on long-term outcomes following [catheter ablation](#) for AF. Participants included 101 patients with known [heart disease](#) as a cause of cardiomyopathy (KHD; 77 patients) and idiopathic dilated cardiomyopathy (IDCM; 24 patients). The patients had left ventricular ejection fraction (LVEF)

Citation: Cardiomyopathy etiology impacts catheter ablation outcomes (2016, January 11) retrieved 26 April 2024 from <https://medicalxpress.com/news/2016-01-cardiomyopathy-etiology-impacts-catheter-ablation.html>

This document is subject to copyright. Apart from any fair dealing for the purpose of private study or research, no part may be reproduced without the written permission. The content is provided for information purposes only.