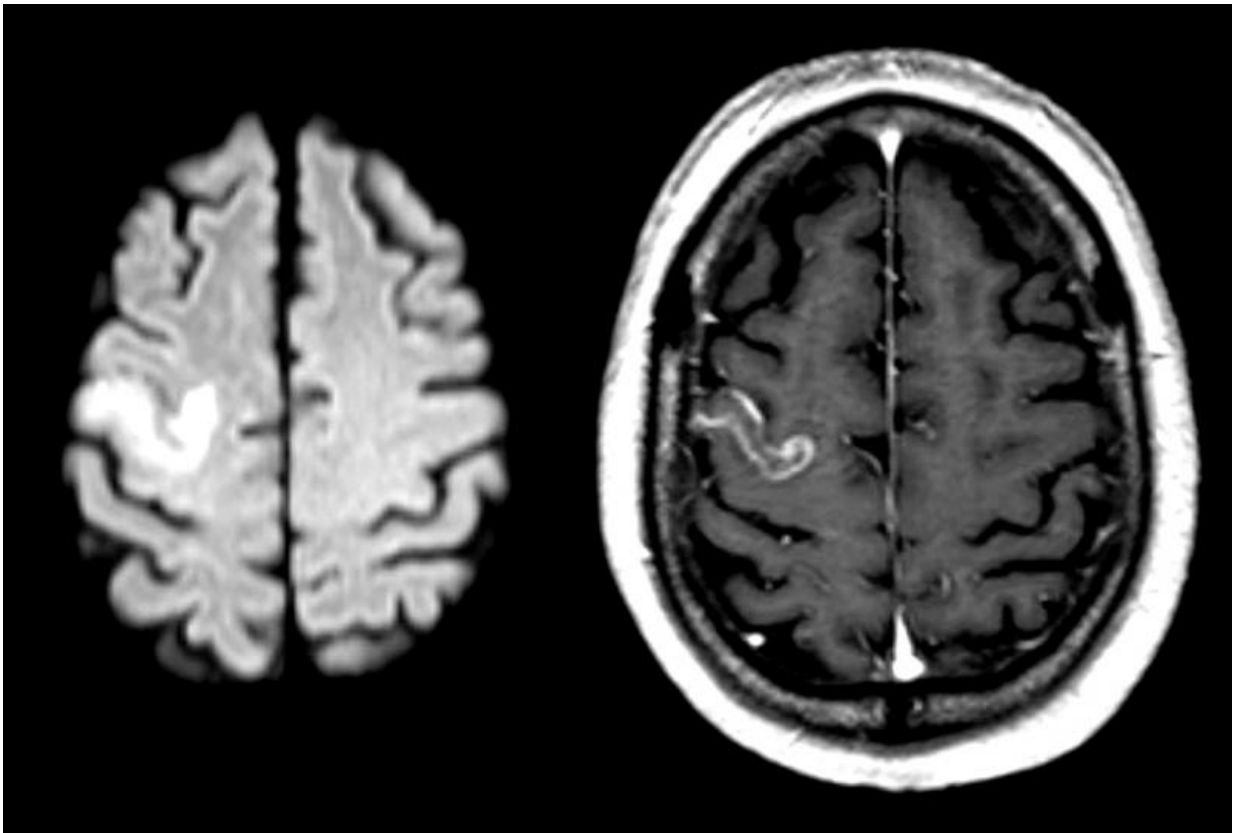


# Future help for stroke patients with language problems

February 1 2016

---



A new method of analysis promises better treatment for stroke patients with language problems in the future. Credit: Wikimedia Commons/Hellerhoff

Brain researcher Karsten Specht has found a new method of analysis to distinguish between stroke patients with language problem. The result

may be individualised treatment for each patient.

The human [language](#) centre is located in the left hemisphere/part of the [brain](#). Sometimes this area is damaged after a stroke. The consequence may be that the patient has difficulties in finding words or to understand language, or aphasia. Today, patients are treated using general language training programmes, based on symptoms.

"Strokes strike individually. This is why it is vital to find the right treatment for each patient," says Professor Karsten Specht at the Department of Biological and Medical Psychology at the University of Bergen (UiB).

## **New analysis may help patients**

Specht has recently studied a new method of [analysis](#) of brain imaging data, or more specifically functional magnetic resonance imaging (fMRI). This new method may in the long run lead to a better way to categorise stroke patients and, hopefully, to a more individualised treatment in the future. Specht suggests that in ten years' time this new treatment could become generally available.

Together with German colleagues, Specht recently published the article 'Therapy-induced brain reorganization patterns in aphasia' in the journal *Brain*.

The article deals with a study, carried out in Germany, observing a group of stroke patients with language difficulties. They were all brain scanned using the fMRI technique as an important part of the analysis. An essential part of the research was done by the Bergen fMRI Group at UiB.

## Researchers conducting a multimodal analysis

Specht is the first to use so-called Joint Independent Component analysis on stroke patients, in which information about lesions in the brain are statistically combined with information about brain activity.

The patients were scanned several times by an fMRI-machine, both before and during language training. During a multimodal analysis, the researchers studied how the networks of the brain were activated.

The multimodal analysis involves analysing MR scan images of the extent of the brain damage in [stroke patients](#) whilst studying brain activity using fMRI scans.

"Using this method, it is possible to find the localisation of the damage, the size of the damage and how the activation patterns in the neural networks are related," Specht explains.

## Looking for hidden brain patterns

In recent years it has been established that the adult brain retains its plasticity and is able to form new connections between neurons.

Post stroke, if the brain is able to reactivate remaining communication networks or create new networks as a result of the therapy, the prognosis for the patient is much improved. The multimodal analysis makes it possible to observe if this is the case or not, and Specht's new method makes it possible to observe this, indirectly.

"The point is to track down active patterns that are characteristic for certain types of [brain damage](#). It is then possible so separate the different types of strokes/patients. In the long run, we hope to point out

the most effective treatment, based on these different sources of information," Specht says.

One example is Specht's observation that patients who suffered a stroke in the back of the left half and are able to activate remaining pathways of the language network may have a more optimistic prognosis than patients suffering a stroke in the front left half of the brain, who do not get this network reactivated after the stroke.

## Hunting for a better diagnosis

To be able to separate different types of damage and the reorganisation of the brain's language/linguistic network is crucial information for the health service. With current methods, according to Specht, this kind of combined information is hard to observe in individual patients.

"Until now researchers have analysed the damaged area and [brain activity](#) in two separate operations. One almost has had to guess the extent of the damage," he says. "This is why it is important to continue basic research to develop new and better integrative analytic tools, which in a longer perspective will provide us with better diagnosis and improved opportunities for therapy."

The current criteria for treatment is symptom-based rather than causal. If a stroke patient suffers language problems, he or she will often join a more general therapy programme.

"A better diagnosis and status report means, hopefully, more individually adapted treatment in the future. You never find two patients with the same damage after a stroke," Karsten Specht says.

**More information:** S. Abel et al. Therapy-induced brain reorganization patterns in aphasia, *Brain* (2015). [DOI](#):

[10.1093/brain/awv022](https://doi.org/10.1093/brain/awv022)

Provided by University of Bergen

Citation: Future help for stroke patients with language problems (2016, February 1) retrieved 23 April 2024 from

<https://medicalxpress.com/news/2016-02-future-patients-language-problems.html>

This document is subject to copyright. Apart from any fair dealing for the purpose of private study or research, no part may be reproduced without the written permission. The content is provided for information purposes only.