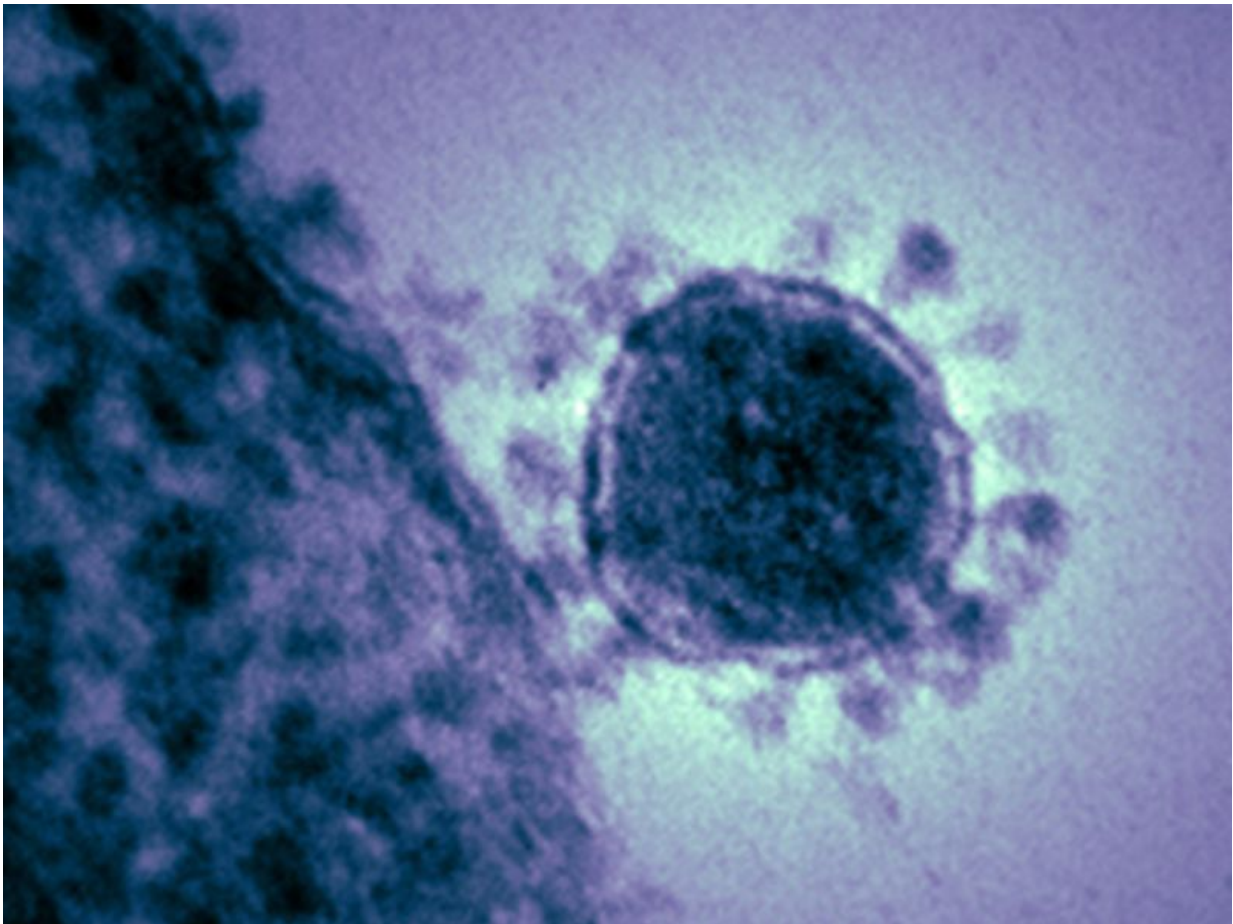


Many cases of MERS-CoV are health care-associated

March 17 2016



(HealthDay)—Middle East respiratory syndrome coronavirus (MERS

CoV) infections are frequently associated with health care settings, according to a report published in the April issue of the U.S. Centers for Disease Control and Prevention's *Emerging Infectious Diseases*.

Jennifer C. Hunter, Dr.P.H., from the CDC in Atlanta, and colleagues reviewed laboratory-confirmed MERS-CoV cases reported to the Health Authority of Abu Dhabi, United Arab Emirates, from Jan. 1, 2013, to May 9, 2014, to identify and describe epidemiologic and clinical characteristics of people with health care-associated MERS-CoV infection.

The researchers found that 42 percent of the 65 case-patients identified with MERS-CoV infection had health care-associated cases. Based on epidemiologic and genetic sequencing findings, three health care clusters were identified, one of which resulted in 20 infected people in one hospital.

"MERS-CoV in health care settings spread predominantly before MERS-CoV infection was diagnosed, underscoring the importance of increasing awareness and infection control measures at first points of entry to [health care facilities](#)," the authors write.

More information: [Full Text](#)

Copyright © 2016 [HealthDay](#). All rights reserved.

Citation: Many cases of MERS-CoV are health care-associated (2016, March 17) retrieved 8 May 2024 from <https://medicalxpress.com/news/2016-03-cases-mers-cov-health-care-associated.html>

This document is subject to copyright. Apart from any fair dealing for the purpose of private study or research, no part may be reproduced without the written permission. The content is provided for information purposes only.
