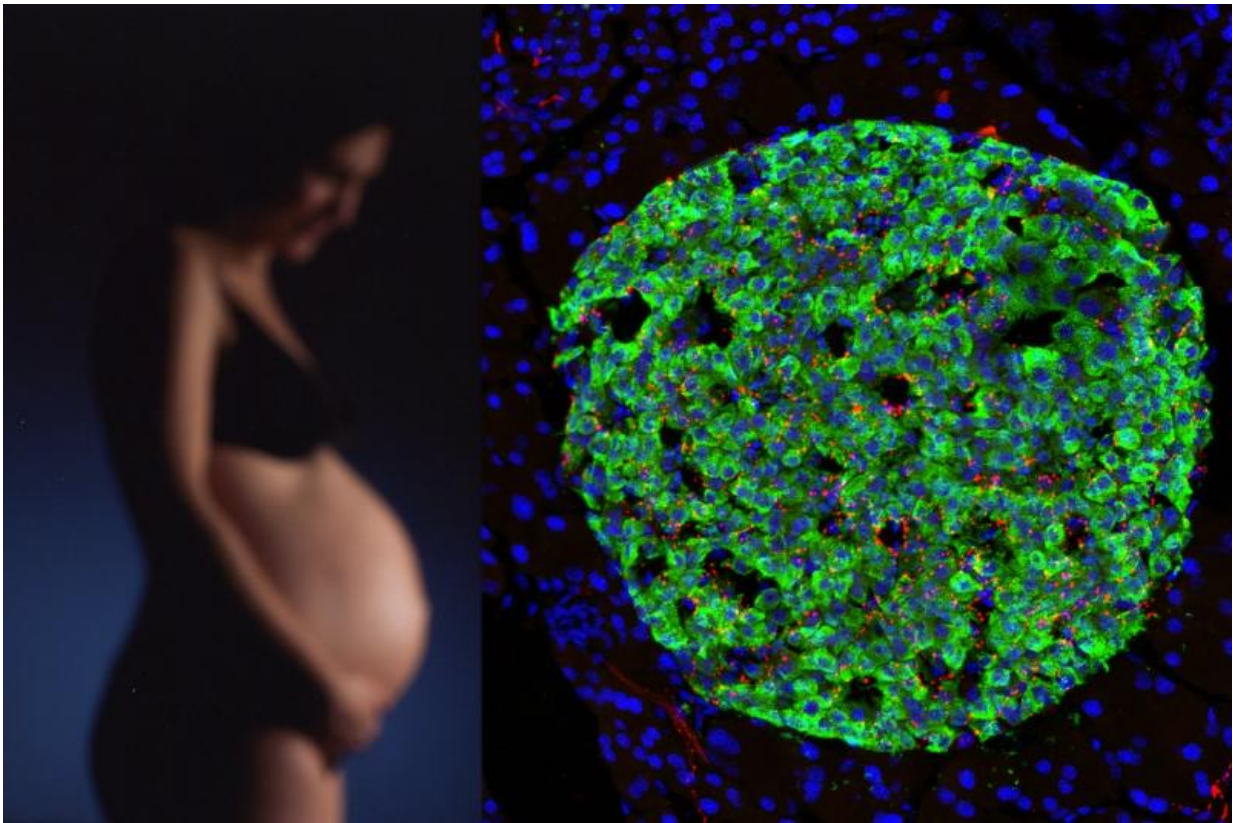


Hormone at key developmental period may point to origin of type 2 diabetes in kids

March 24 2016



Leptin inhibits prenatal development of neuronal connections between brain and pancreas. Credit: Sebastien G. Bouret, PhD

A new study led by researchers at The Saban Research Institute of Children's Hospital Los Angeles (CHLA) reports that the presence of

leptin - a hormone secreted by fat cells that is critical to maintaining energy balance in the body—inhibits the prenatal development of neuronal connections between the brain and pancreas. The findings could help explain the origin of type 2 diabetes, particularly in children of obese mothers.

This study reveals an unanticipated regulatory role of [leptin](#) on the parasympathetic nervous system during embryonic development, which may have important implications for understanding the early mechanisms that contribute to diabetes. The findings will be published online by the journal *Cell Reports* on March 24, 2016 in advance of print publication on April 5, 2016.

The autonomic nervous system, made up of sympathetic and parasympathetic branches, is essential for the regulation of blood glucose levels by directly controlling [insulin secretion](#) by the pancreas. Insulin secretion and [blood glucose levels](#) are also regulated by hormonal factors, including leptin, and dysregulation of pancreatic function and insulin secretion is a hallmark of diabetes.

"We showed that exposure of the embryonic mouse [brain](#) to leptin during a key developmental period resulted in permanent alternations in the growth of neurons from the brain stem to the pancreas, resulting in long-term disturbances to the balance of insulin levels in the adult mouse ," said Sebastien G. Bouret, PhD, researcher in the developmental neuroscience program at CHLA.

Looking at when autonomic innervation occurred - creating direct connections between the brain and pancreatic β cells - and the factors influencing it during [embryonic development](#), the scientists found that leptin receptors are highly expressed in the brain stem. When the scientists injected a single dose of leptin directly into the brain of mouse embryos during mid-gestation, it had a permanent effect of reducing

connectivity between brain stem and pancreas.

"This breakdown in communication from the brain to the pancreas resulted in impaired glucose regulation, or homeostasis, in the adult mouse," said Bouret, who is also an associate professor of pediatrics at the Keck School of Medicine of the University of Southern California.

"This study reveals an unanticipated regulatory role for the leptin hormone known to be produced by [fat cells](#). Because babies of obese moms have high levels of leptin, it might put them at a higher risk for type 2 diabetes and obesity."

Provided by Children's Hospital Los Angeles

Citation: Hormone at key developmental period may point to origin of type 2 diabetes in kids (2016, March 24) retrieved 20 March 2024 from

<https://medicalxpress.com/news/2016-03-hormone-key-developmental-period-diabetes.html>

<p>This document is subject to copyright. Apart from any fair dealing for the purpose of private study or research, no part may be reproduced without the written permission. The content is provided for information purposes only.</p>
--