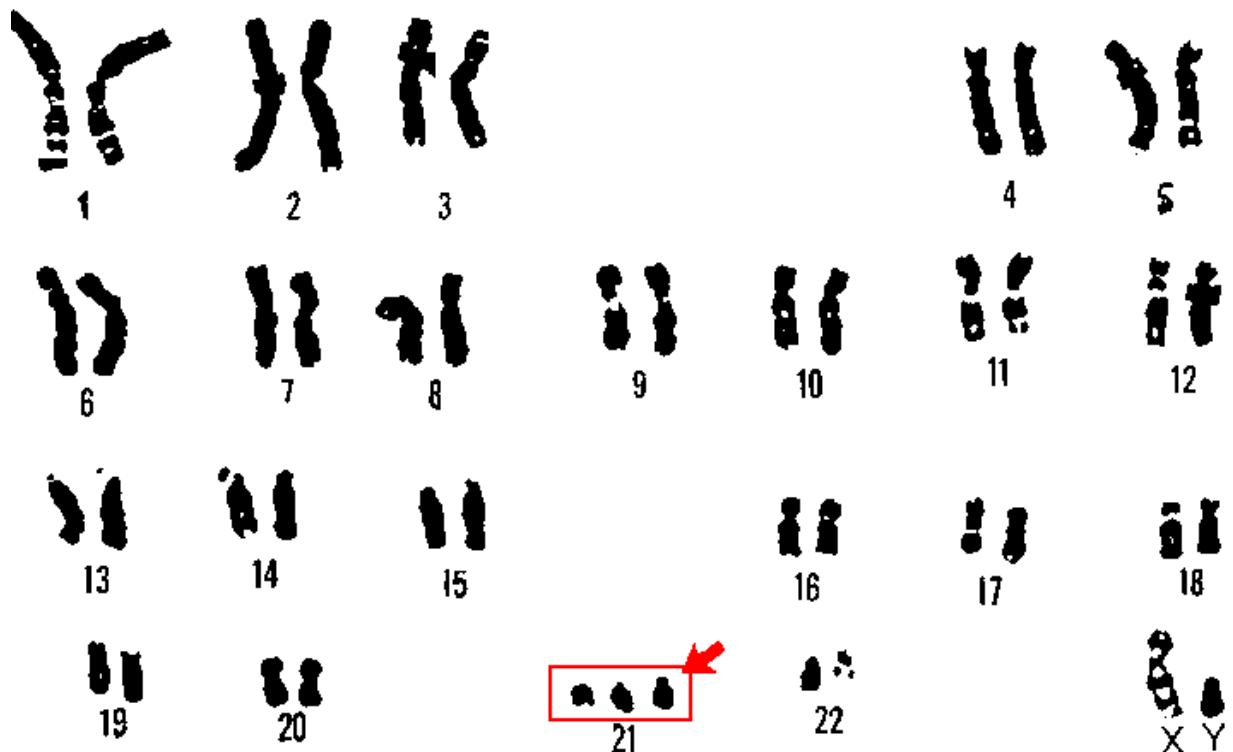


# Same gene links blood sugar problems in Down syndrome and Type 2 diabetes

May 19 2016



The karyotype of 21 trisomy (Down syndrome). Credit: US Government, Public Domain

Problems with insulin secretion experienced by people with Type 2 diabetes, parallel similar problems with insulin-secreting beta cells in many individuals with Down syndrome. A new study, published on May

19 in *PLOS Genetics* by Professor Damien Keating of Flinders University and colleagues, has used this knowledge to identify a single gene that may cause these problems.

Many individuals with Down syndrome experience lower [insulin secretion](#), mitochondrial dysfunction and increased oxidative stress in the insulin-producing [beta cells](#) of the pancreas; conditions that also appear in people with Type 2 diabetes. Down syndrome is the most common genetic disorder and occurs when a person has an extra copy of some or all of chromosome 21. To identify genes duplicated in Down syndrome that contribute to problems with insulin secretion, scientists screened the genes of four mouse models of the disorder—two had [high blood sugar](#) and two did not. They narrowed down the list by comparing it to genes overexpressed in beta cells from humans with Type 2 diabetes. The comparison identified a single gene, RCAN1, which, when overexpressed in mice, causes them to have abnormal mitochondria in their beta cells, produce less ATP and secrete less insulin in the presence of glucose.

The results of the study not only explain why individuals with Down syndrome are more likely to have Type 1 diabetes, but have revealed the function of a gene that may be playing a lead role in development of Type 2 [diabetes](#) in the general population. This approach could be applied to other health disorders with symptoms that also appear in individuals with Down syndrome.

**More information:** Peiris H, Duffield MD, Fadista J, Jessup CF, Kashmir V, Genders AJ, et al. (2016) A Syntenic Cross Species Aneuploidy Genetic Screen Links RCAN1 Expression to  $\beta$ -Cell Mitochondrial Dysfunction in Type 2 Diabetes. *PLoS Genet* 12(5):e1006033. [DOI: 10.1371/journal.pgen.1006033](https://doi.org/10.1371/journal.pgen.1006033)

Provided by Public Library of Science

Citation: Same gene links blood sugar problems in Down syndrome and Type 2 diabetes (2016, May 19) retrieved 3 May 2024 from

<https://medicalxpress.com/news/2016-05-gene-links-blood-sugar-problems.html>

This document is subject to copyright. Apart from any fair dealing for the purpose of private study or research, no part may be reproduced without the written permission. The content is provided for information purposes only.