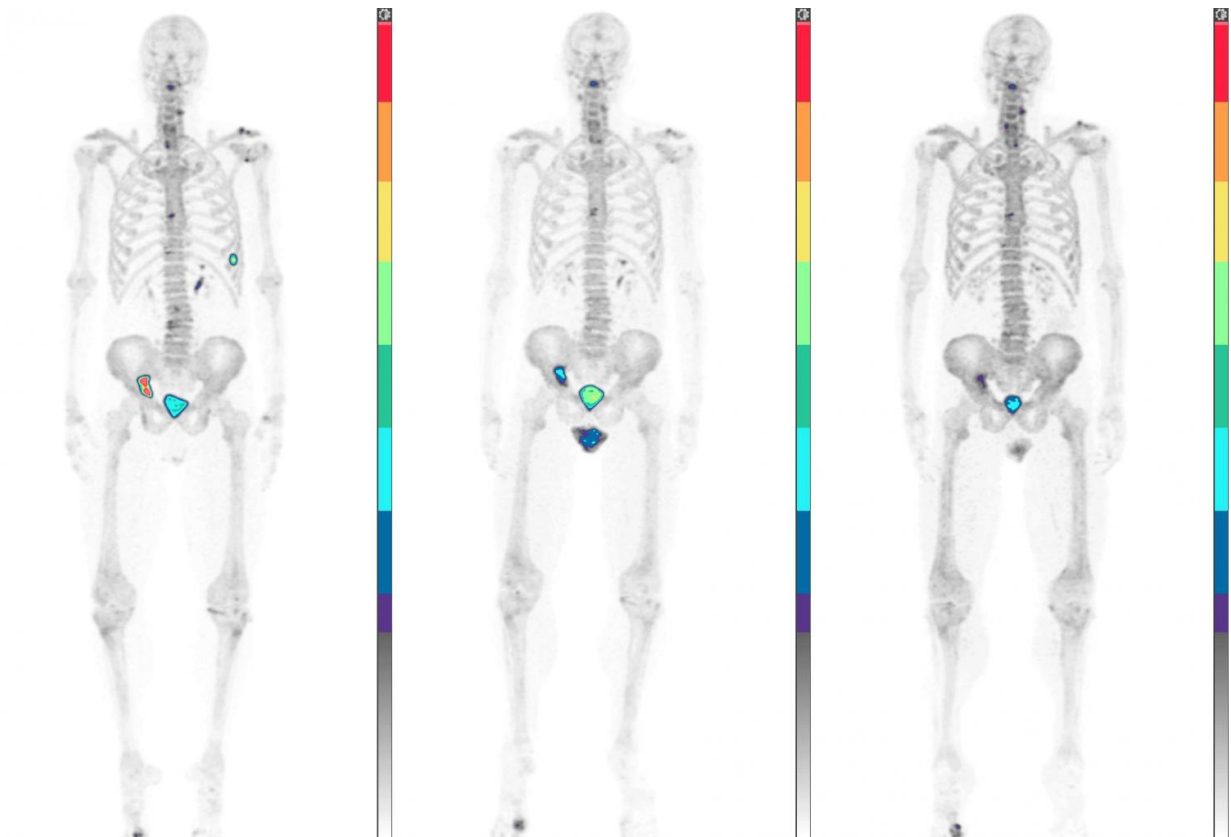


Predicting advanced prostate cancer outcomes with NaF-PET/CT

June 7 2016



From a baseline PSA of 10.3, the PSA went down to 0.05 at 6 months and less than 0.01 at 12 months. Sequential NaF-PET/CT scans showed a significant decrease in uptake in the right pelvic skeletal lesion. Image intensities were equally adjusted. Credit: M. Liza Lindenberg, MD, Center for Cancer Research, National Cancer Institute

A recent pilot study reported in the June issue of *The Journal of Nuclear Medicine* found that sodium fluoride (NaF-18) positron emission tomography/computed tomography (NaF-PET/CT) accurately detects bone metastases in patients with advanced prostate cancer, and follow-up scans over time correlate clearly with clinical outcomes and patient survival.

According to the Centers for Disease Control and Prevention, in 2012 (the most recent year for which numbers are available) 177,489 men in the United States were diagnosed with [prostate cancer](#), and 27,244 men in the U.S. died from the disease.

Andrea B. Apolo, MD, chief of the Bladder Cancer Section, Center for Cancer Research, at the National Cancer Institute in Bethesda, Md., said, "To our knowledge, this is the first report of follow-up NaF scans of prostate cancer patients over a one-year period correlated with survival. The findings in this study provide support for the use of NaF-PET/CT in clinical practice in patients with advanced prostate cancer."

Sixty prostate cancer patients, including 30 with and 30 without known [bone metastases](#) by conventional imaging, underwent NaF-PET/CT at baseline, 6, and 12 months. Positive lesions were verified on follow-up scans. Changes in standardized uptake values (SUV) and lesion number were correlated with prostate-specific antigen (PSA) change, clinical impression, and overall survival. Also, greater change in SUV at 6 and 12 months correlated with greater change in PSA.

In an exploratory analysis, paired Tc-99m-MDP bone scans (TcBS) were available in 35 patients at baseline, 19 at 6 months, and 14 at 12 months. Malignant lesions on NaF-PET/CT were classified on TcBS as malignant only 65 percent of the time; 25 percent were indeterminate; and 10 percent were negative. In addition, 65 percent of paired scans showed more lesions on NaF-PET/CT than on TcBS.

The study shows that NaF-PET/CT detects more bone metastases earlier than TcBS and enhances detection of new bone disease in high-risk patients.

Apolo stated, "Our study suggests that NaF-PET/CT may be a useful imaging modality in the diagnosis, prognosis and follow-up of prostate [cancer patients](#) at high risk for bone metastasis. It provides a strong rationale to further the clinical development of NaF-PET/CT as a bone imaging tool in prostate cancer and other malignancies.

More information: A. B. Apolo et al, Prospective Study Evaluating Na¹⁸F PET/CT in Predicting Clinical Outcomes and Survival in Advanced Prostate Cancer, *Journal of Nuclear Medicine* (2016). [DOI: 10.2967/jnumed.115.166512](#)

Provided by Society of Nuclear Medicine

Citation: Predicting advanced prostate cancer outcomes with NaF-PET/CT (2016, June 7) retrieved 28 April 2024 from <https://medicalxpress.com/news/2016-06-advanced-prostate-cancer-outcomes-naf-petct.html>

| |
|--|
| <p>This document is subject to copyright. Apart from any fair dealing for the purpose of private study or research, no part may be reproduced without the written permission. The content is provided for information purposes only.</p> |
|--|