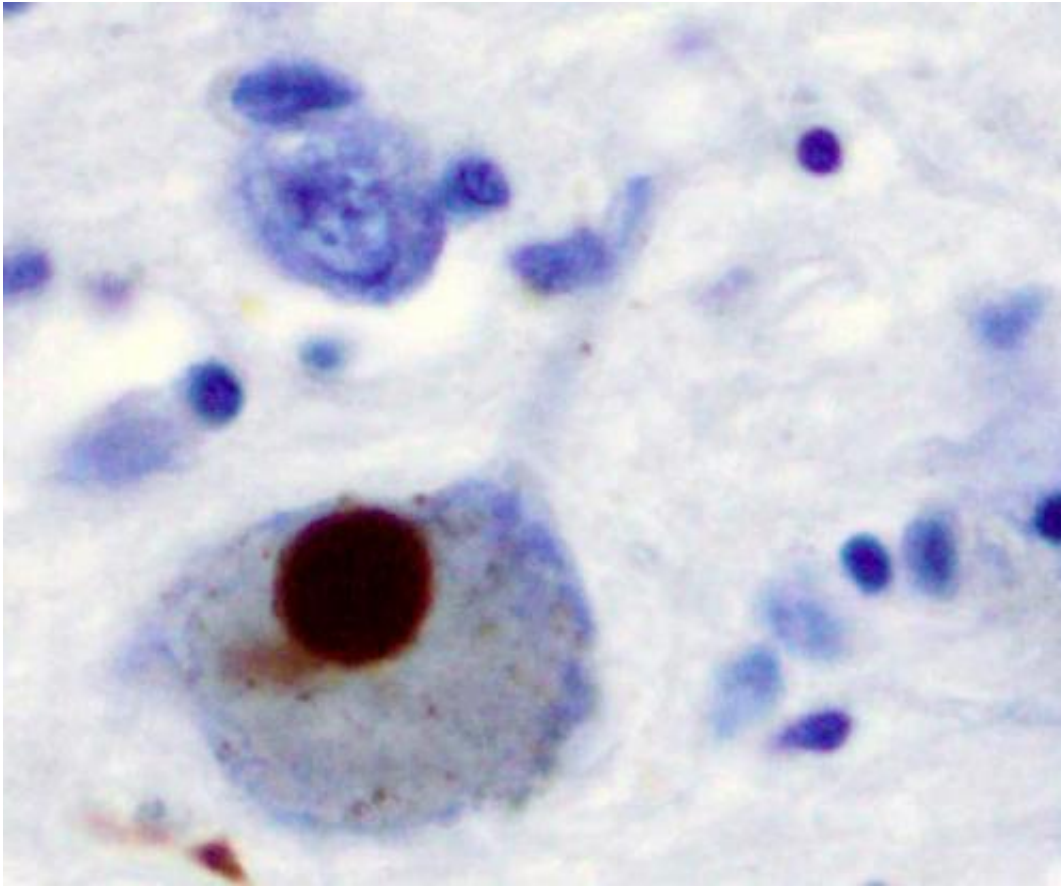


New gene shown to cause Parkinson's disease

June 6 2016



Immunohistochemistry for alpha-synuclein showing positive staining (brown) of an intraneural Lewy-body in the Substantia nigra in Parkinson's disease. Credit: Wikipedia

Northwestern Medicine scientists have discovered a new cause of Parkinson's disease—mutations in a gene called TMEM230. This appears to be the third gene definitively linked to confirmed cases of the

common movement disorder.

In a study published in *Nature Genetics*, the scientists provided evidence of TMEM230 mutations in patients with Parkinson's disease from both North America and Asia. They also demonstrated that the gene is responsible for producing a protein involved in packaging the neurotransmitter dopamine in neurons. Loss of dopamine-producing neurons is a defining characteristic of Parkinson's disease.

Taken together, the study's findings provide new clues to explain how Parkinson's disease develops in the brain. Those clues may inform future therapies for the disorder, which currently has no cure and few known causes.

"Previous research has associated Parkinson's disease with various factors in the environment, but the only direct causes that are known are genetic," said principal investigator Dr. Teepu Siddique, the Les Turner ALS Foundation/Herbert C. Wenske Foundation Professor at Northwestern University Feinberg School of Medicine. "Many genes have been claimed to cause Parkinson's disease, but they haven't been validated. We show that mutations in this new gene lead to pathologically and clinically proven cases of the disease."

About 15 percent of Parkinson's disease cases are thought to be caused by genetics, primarily by mutations in two genes called SNCA and LRRK2. Siddique said that other genes have only been associated with features of parkinsonism, a general term for neurological disorders with motor symptoms.

The Northwestern Medicine team's proof that mutations in TMEM230 lead to Parkinson's disease is the result of 20 years of research conducted with collaborators around the world.

How they uncovered the gene

The project began in 1996, when Siddique and study first author Dr. Han-Xiang Deng, began investigating a family with 15 members who had typical symptoms of Parkinson's disease. Using DNA samples provided by co-author Dr. Ali Rajput, from the University of Saskatchewan, Siddique and Deng performed genome-wide analysis on 65 of the family's members, including 13 with the disease, in hopes of finding a common mutation that could explain the prevalence.

They were able to narrow the search down to a small region of DNA on chromosome 20 that contained 141 known genes. Using whole exome sequencing technology, they then compared DNA variations—genetic differences—in one healthy family member to those in four family members with the disease. The scientists found more than 90,000 variants before eventually identifying TMEM230 as the gene with disease-causing mutation.

"This was a totally new gene. We didn't know its function," Deng explained. "So we did a series of studies to find out where the protein encoded by this gene is located and what it does."

The scientists discovered that TMEM230 encodes a protein that extends across the membrane of tiny sacks inside neurons called [synaptic vesicles](#), which store neurotransmitters before they're released from one cell to another.

"Current symptomatic treatments for Parkinson's disease increase the [neurotransmitter dopamine](#) that is released by these synaptic vesicles to cells that project into different parts of the brain controlling motor activity, mood and many other organ systems affected by the disease," Siddique said.

The scientists hypothesize that the protein is involved in the movement of these vesicles.

"We believe that vesicle trafficking defects are a key mechanism of Parkinson's disease, not just for cases with this mutation, but a common pathway for the majority of cases. All three of the authenticated [genes](#) are concentrated on synaptic vesicles," Deng said. "Our new findings suggest that normalizing synaptic vesicle trafficking may be a strategy for future therapeutic development. We can develop drugs to promote this critical pathway."

Verifying the gene across populations

Importantly, the research team also found mutations in the TMEM230 gene in cases of Parkinson's disease in additional families in North America and as far away as China. They verified that these patients had both clinical characteristics of the disease (symptoms like tremors, slow movement and stiffness) as well as pathological evidence in the brain (loss of dopamine neurons and abnormal accumulations of proteins inside surviving neurons).

"This particular gene causing Parkinson's disease is not just limited to one population in North America," Siddique said. "It's worldwide, found in very different ethnic and environmental conditions. These mutations are that strong."

In future research, Siddique and Deng plan to explore how TMEM230 mutations cause disease using mouse models.

Siddique is a professor of neurology and of cell and molecular biology at Feinberg. Deng is a research professor of neurology.

More information: Identification of TMEM230 mutations in familial

Parkinson's disease, *Nature Genetics*, [DOI: 10.1038/ng.3589](https://doi.org/10.1038/ng.3589)

Provided by Northwestern University

Citation: New gene shown to cause Parkinson's disease (2016, June 6) retrieved 18 April 2024 from <https://medicalxpress.com/news/2016-06-gene-shown-parkinson-disease.html>

This document is subject to copyright. Apart from any fair dealing for the purpose of private study or research, no part may be reproduced without the written permission. The content is provided for information purposes only.