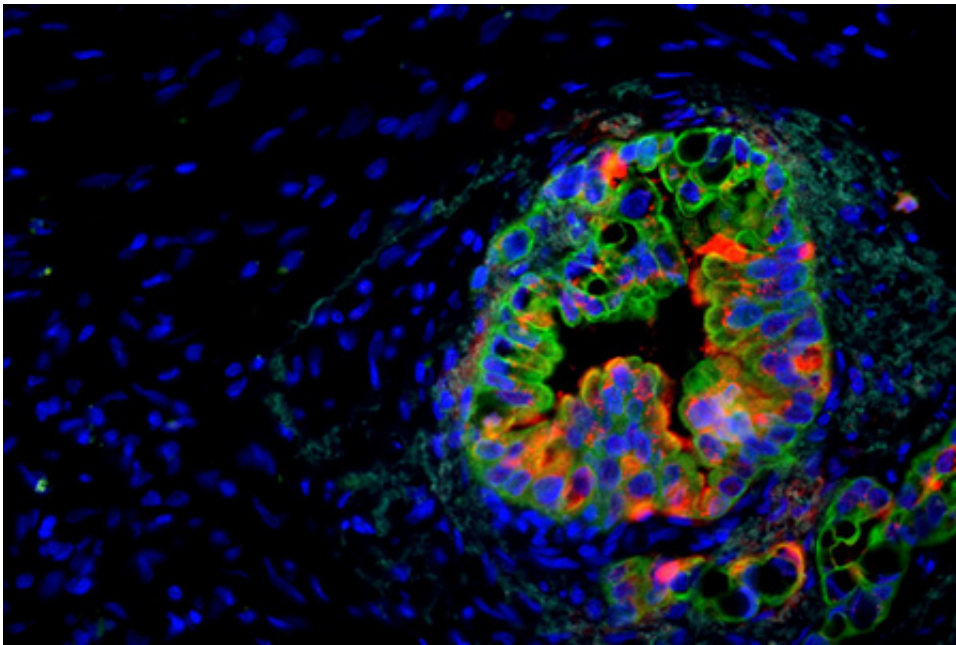


Novel imaging model helps reveal new therapeutic target for pancreatic cancer

June 6 2016



Expression of the stem cell gene Musashi in human pancreatic cancer. Cancer cells are shown in green, Musashi expression in red and blue includes cells within the cancer microenvironment. Credit: Dawn Jaquish, UC San Diego

Pancreatic ductal adenocarcinoma, the most common of pancreatic cancers, is extraordinarily lethal, with a 5-year survival rate of just 6 percent. Chemotherapy treatments are poorly effective, in part due to a high degree of drug-resistance to currently used regimens.

In a new study, published online June 6 in *Nature*, researchers at

University of California San Diego School of Medicine and Moores Cancer Center, together with colleagues at Keio University, the University of Nebraska and Ionis Pharmaceuticals describe an innovative new model that not only allowed them to track drug resistance *in vivo*, but also revealed a new therapeutic target, which early testing suggests could provide a strategy to arrest pancreatic [cancer growth](#).

In a collaboration that combined scientific and clinical expertise, principal investigators Tannishtha Reya, PhD, professor in the departments of Pharmacology and Medicine at UC San Diego School of Medicine, and Andrew Lowy MD, chief of surgical oncology in the Department of Surgery at UC San Diego Health and Moores Cancer Center, worked with colleagues to develop a new "reporter" mouse model that enables non-invasive, image-based tracking of stem cell signals in living animals.

Using this strategy, the group showed that the stem cell gene Musashi (Msi) is a critical element in pancreatic cancer progression. In particular, the work revealed that Msi expression rises with cancer progression and that Msi expressing cells are key drivers of cancer growth, drug resistance and lethality.

Given the role of Msi in promoting aggressive disease, the investigators partnered with Robert MacLeod PhD, vice-president of oncology drug discovery at Ionis Pharmaceuticals, to develop next-generation antisense oligonucleotide (ASO) inhibitors against Msi. These inhibitors effectively targeted and blocked Msi expressing cells, resulting in halted tumor growth in animal models as well as in patient-derived cancer cells, which harbor more complex mutations and are uniformly drug-resistant.

Antisense inhibitors are synthetic nucleic acid drugs that can be designed to selectively bind to messenger RNA from the targeted, disease-linked gene, and inactivate it.

Reya said the findings could be broadly useful for studying cancer. "Because Msi reporter activity can be visualized by live imaging," said Reya, "these models can be used to track [cancer stem cells](#) within the tumor microenvironment, providing a real-time view of cancer growth and metastasis, and serving as a platform to test new drugs that may be better able to eradicate resistant cells."

She also noted the targeting Msi in primary tumors significantly changed "the trajectory of progression by halting [pancreatic cancer](#) growth and improving survival," inhibiting both [cancer](#) stem cells and other tumor [cells](#). "This really highlights our ability to translate these findings and suggests that Msi antagonists could be a new strategy for targeting resistance to chemotherapy."

More information: Raymond G. Fox et al, Image-based detection and targeting of therapy resistance in pancreatic adenocarcinoma, *Nature* (2016). [DOI: 10.1038/nature17988](https://doi.org/10.1038/nature17988)

Provided by University of California - San Diego

Citation: Novel imaging model helps reveal new therapeutic target for pancreatic cancer (2016, June 6) retrieved 19 April 2024 from <https://medicalxpress.com/news/2016-06-imaging-reveal-therapeutic-pancreatic-cancer.html>

<p>This document is subject to copyright. Apart from any fair dealing for the purpose of private study or research, no part may be reproduced without the written permission. The content is provided for information purposes only.</p>
--