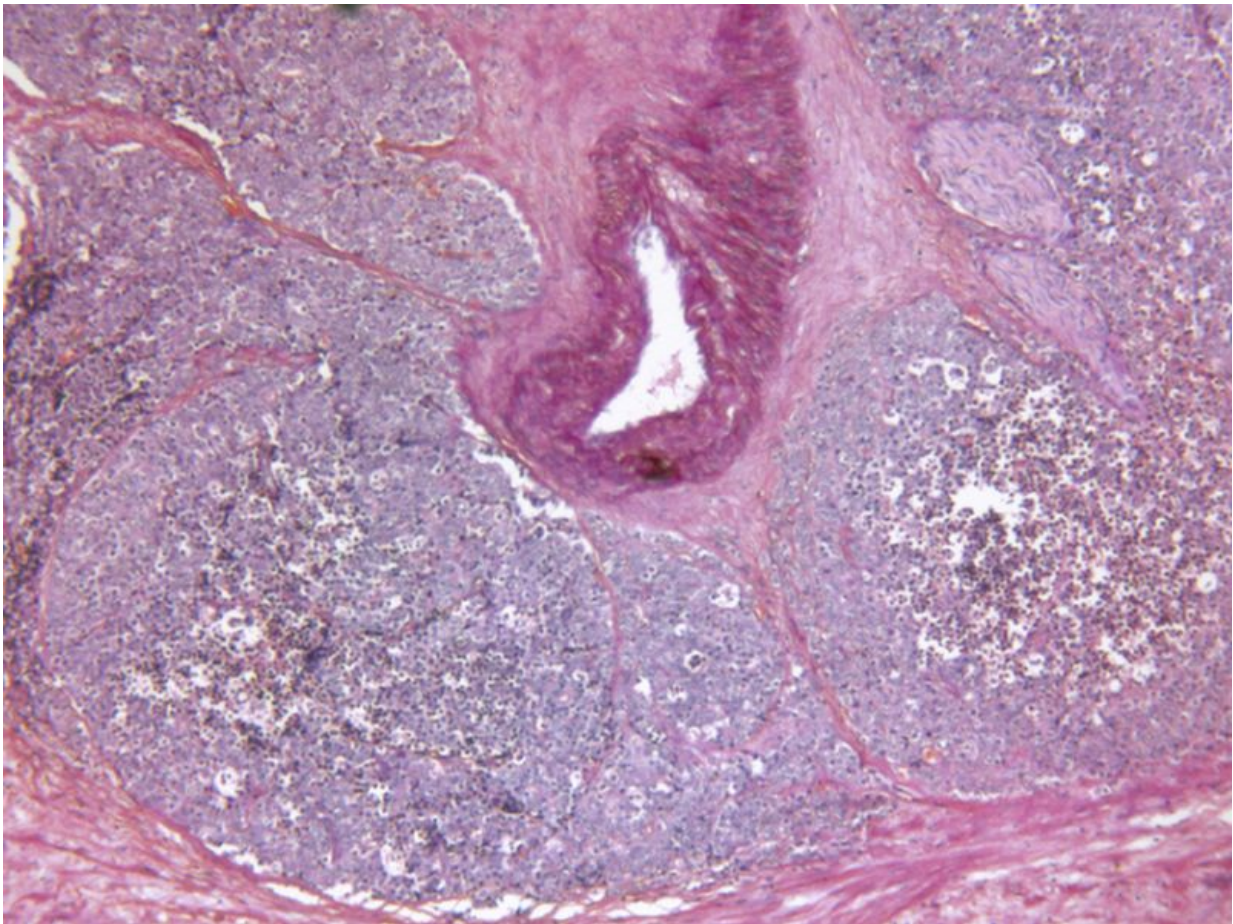


SBRT, proton beam therapy use increasing for prostate CA

June 13 2016



(HealthDay)—For men with prostate cancer, the use of stereotactic body

radiotherapy (SBRT) and proton beam therapy increased from 2004 to 2011, according to a study published online May 25 in *Cancer*.

Joshua A. Halpern, M.D., from the Weill Cornell Medical College in New York City, and colleagues compared temporal trends and outcomes for men with [prostate cancer](#) undergoing SBRT, brachytherapy, intensity-modulated radiotherapy (IMRT), and [proton beam](#) therapy (542; 9,647; 23,408; and 800 men, respectively) from 2004 to 2011.

The researchers found that the use of SBRT and proton beam therapy increased significantly (P cancer (Gleason score, ≤ 6 versus ≥ 7) (35.2 and 49.6 percent versus 54.0 and 64.2 percent, respectively; P brachytherapy, \$37,090 for IMRT, and \$54,706 for proton beam therapy (P

"Despite men of lower disease stage undergoing SBRT, SBRT was found to be associated with greater toxicity but lower health care costs compared with IMRT and [proton beam therapy](#)," the authors write.

One author disclosed financial ties to the pharmaceutical industry.

More information: [Abstract](#)
[Full Text \(subscription or payment may be required\)](#)

Copyright © 2016 [HealthDay](#). All rights reserved.

Citation: SBRT, proton beam therapy use increasing for prostate CA (2016, June 13) retrieved 2 May 2024 from <https://medicalxpress.com/news/2016-06-sbrrt-proton-therapy-prostate-ca.html>

This document is subject to copyright. Apart from any fair dealing for the purpose of private study or research, no part may be reproduced without the written permission. The content is provided for information purposes only.
