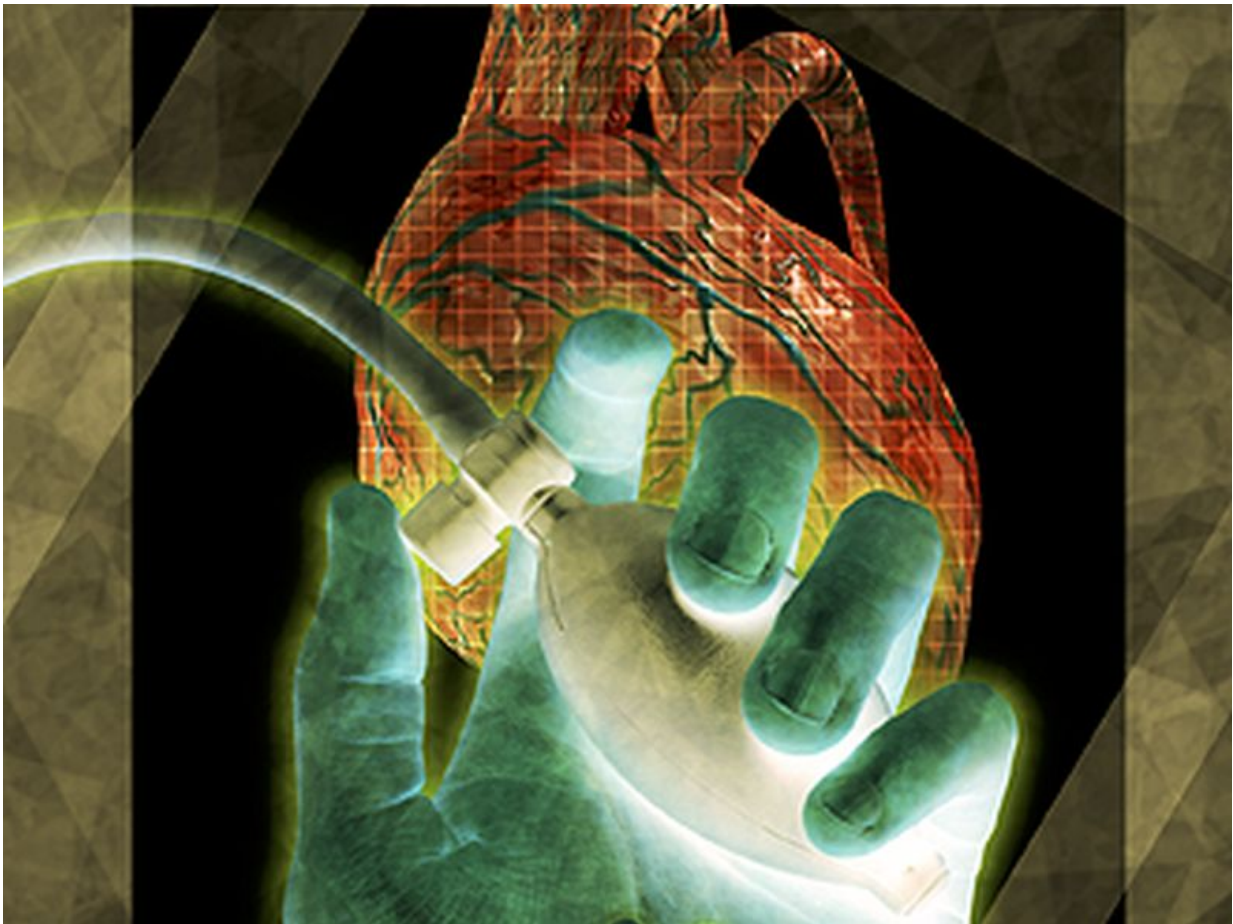


Low diastolic BP linked to subclinical myocardial damage

August 31 2016



(HealthDay)—Low diastolic blood pressure (DBP) is associated with

subclinical myocardial damage and coronary heart disease (CHD) events, according to a study published online Aug. 30 in the *Journal of the American College of Cardiology*. The research was published to coincide with the annual European Society of Cardiology Congress, held from Aug. 27 to 31 in Rome.

John W. McEvoy, M.B., B.Ch., from the Johns Hopkins Bloomberg School of Public Health in Baltimore, and colleagues analyzed data for 11,565 adults from the Atherosclerosis Risk in Communities study to examine the independent association of DBP with myocardial damage and with CHD events over 21 years.

The researchers found that the adjusted odds ratio of having high sensitivity cardiac troponin-T (hs-cTnT) ≥ 14 ng/L at baseline was 2.2 and 1.5 for those with DBP

Citation: Low diastolic BP linked to subclinical myocardial damage (2016, August 31) retrieved 9 April 2024 from <https://medicalxpress.com/news/2016-08-diastolic-bp-linked-subclinical-myocardial.html>

<p>This document is subject to copyright. Apart from any fair dealing for the purpose of private study or research, no part may be reproduced without the written permission. The content is provided for information purposes only.</p>
--