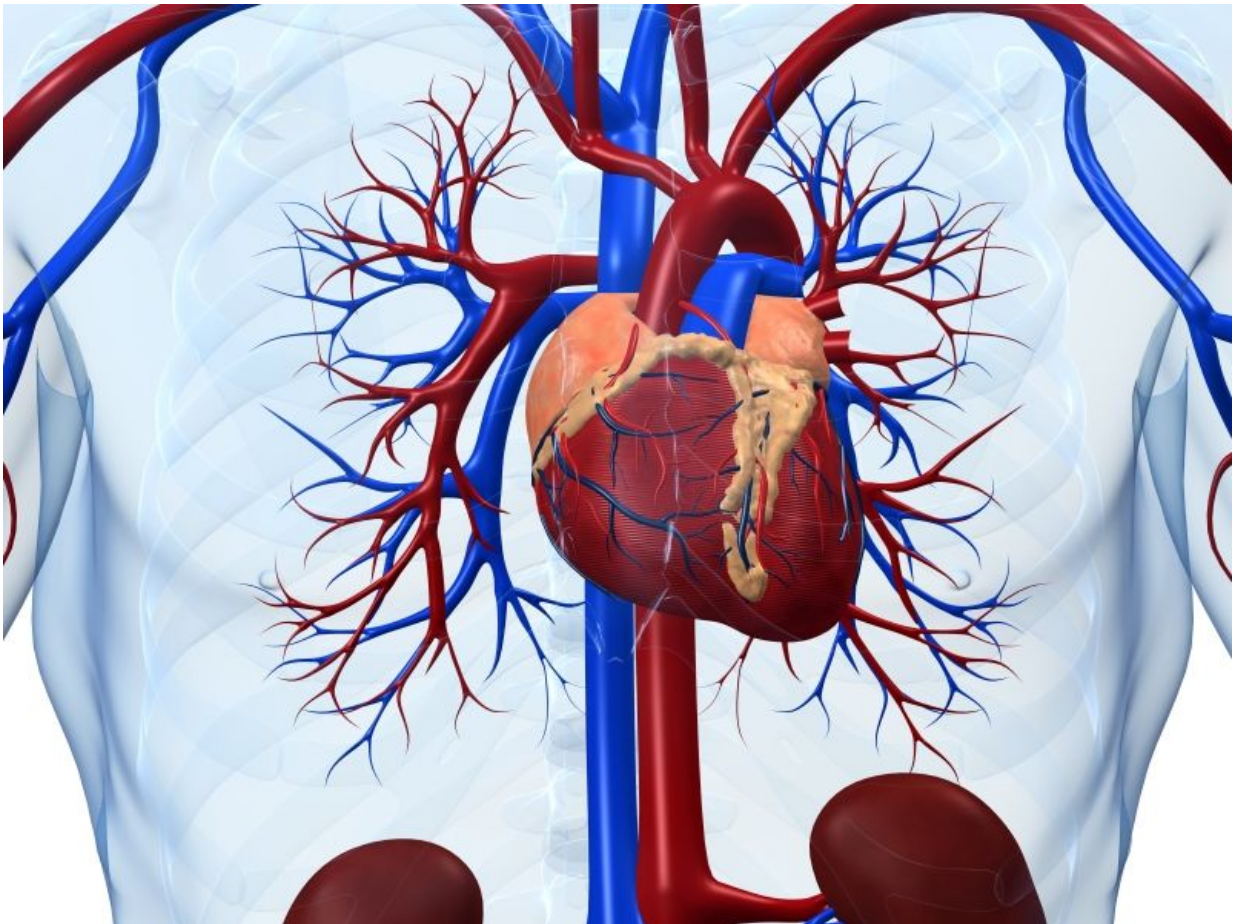


Off-hours presentation not detrimental in STEMI

August 31 2016



(HealthDay)—For patients with ST-segment elevation myocardial

infarction (STEMI), presentation off-hours seems not to be associated with risk, according to a research letter published online Aug. 30 in the *Journal of the American College of Cardiology*. The research was published to coincide with the annual European Society of Cardiology Congress, held from Aug. 27 to 31 in Rome.

Senthil Selvaraj, M.D., from Brigham and Women's Hospital Heart & Vascular Center and Harvard Medical School in Boston, and colleagues examined outcomes for 1,992 patients from the CHAMPION PHOENIX trial presenting with STEMI during off-hours versus during the workday. Patients were dichotomized according to time of presentation.

The researchers found that off-hours [patients](#), who presented during weekdays from 7 p.m. to 7 a.m., weekends, and holidays, underwent percutaneous coronary intervention more rapidly from symptom onset (P

"Previous hazards identified with off-hours presentation in STEMI were not seen in a large, international, contemporary trial with prospective data collection and adjudication of efficacy outcomes," the authors write

Several authors disclosed financial ties to pharmaceutical and medical device companies, including the Medicines Co., which sponsored the CHAMPION PHOENIX trial.

More information: [Full Text \(subscription or payment may be required\)](#)
[More Information](#)

Copyright © 2016 [HealthDay](#). All rights reserved.

Citation: Off-hours presentation not detrimental in STEMI (2016, August 31) retrieved 5 May 2024 from <https://medicalxpress.com/news/2016-08-off-hours-detrimental-stemi.html>

This document is subject to copyright. Apart from any fair dealing for the purpose of private study or research, no part may be reproduced without the written permission. The content is provided for information purposes only.