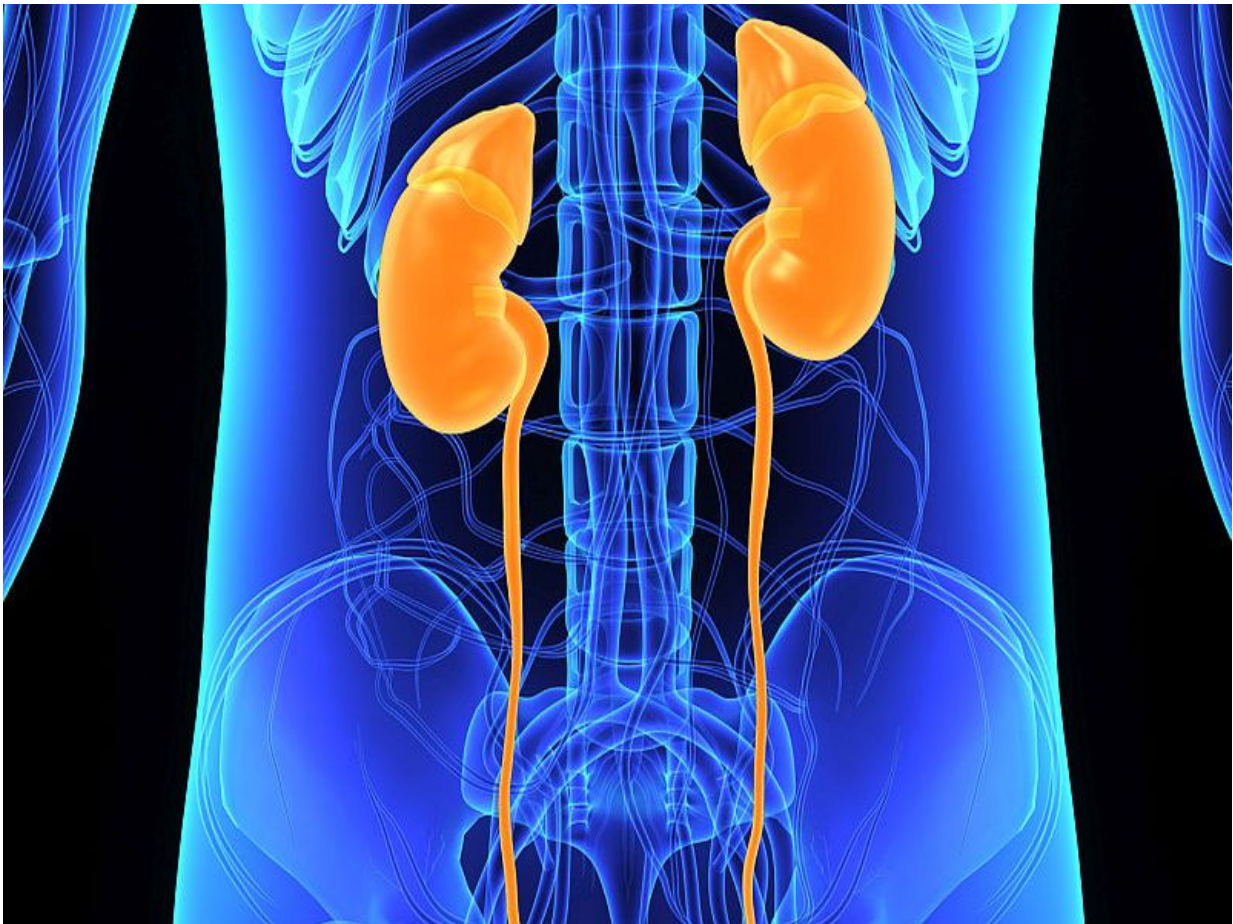


Early Rx with losartan doesn't slow kidney disease progression

September 16 2016



(HealthDay)—For American-Indians with type 2 diabetes, early

administration of losartan does not slow progression of glomerular filtration rate (GFR) decline, according to a study published online Sept. 9 in *Diabetes Care*.

Stephanie K. Tanamas, Ph.D., from the National Institutes of Health in Phoenix, and colleagues examined whether early administration of losartan slows progression of [kidney disease](#) in a six-year trial in 169 American-Indians with type 2 diabetes. Participants with urine albumin/creatinine ratio

Citation: Early Rx with losartan doesn't slow kidney disease progression (2016, September 16) retrieved 16 May 2024 from <https://medicalxpress.com/news/2016-09-early-rx-losartan-doesnt-kidney.html>

This document is subject to copyright. Apart from any fair dealing for the purpose of private study or research, no part may be reproduced without the written permission. The content is provided for information purposes only.