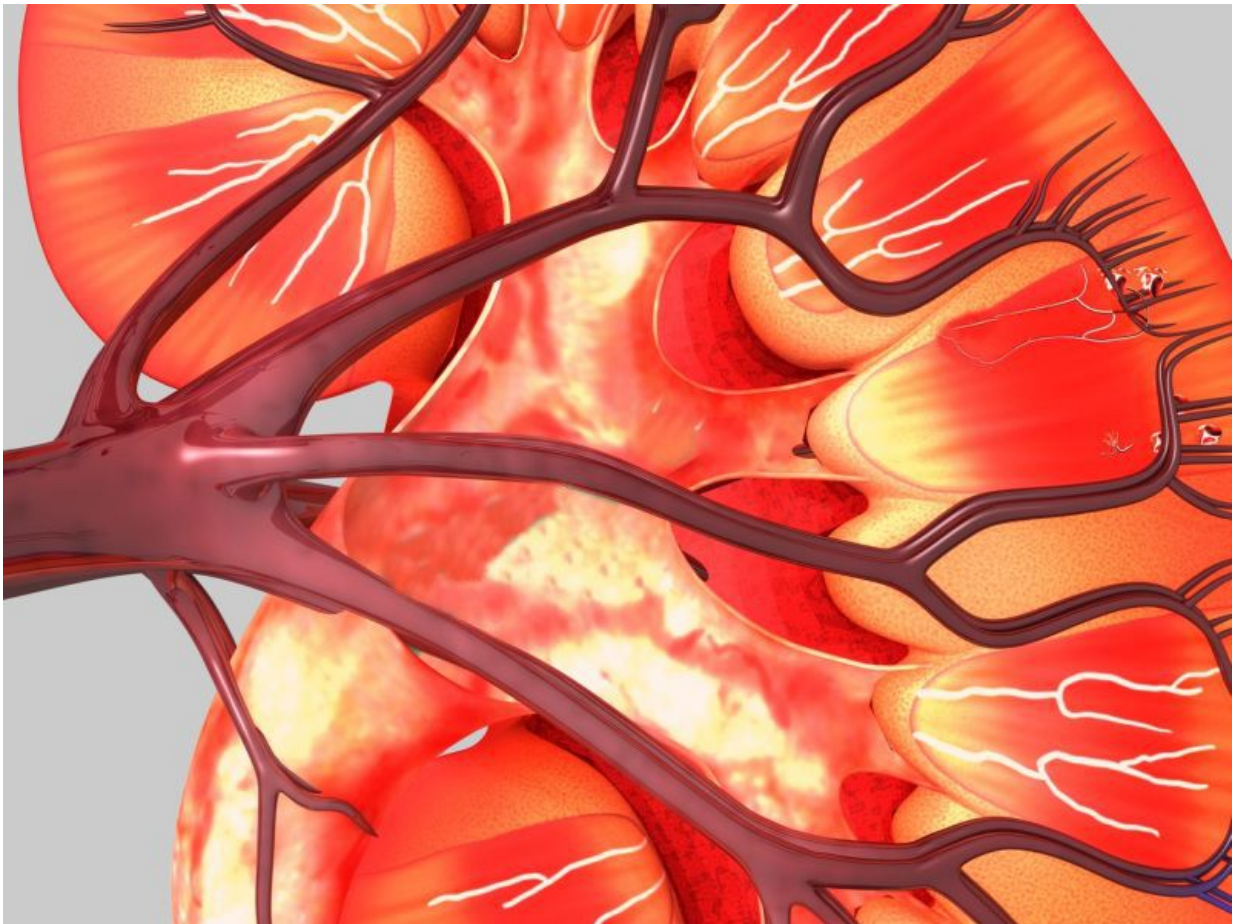


## Acute kidney injury is risk factor for delirium, coma

November 24 2016

---



(HealthDay)—For critically ill adults, acute kidney injury is a risk factor

for delirium and coma, according to a study published online Nov. 17 in the *American Journal of Respiratory and Critical Care Medicine*.

Edward D. Siew, M.D., from the Vanderbilt University Medical Center in Nashville, Tenn., and colleagues examined whether acute kidney injury correlates with [delirium](#) and coma in 466 critically ill adults in a prospective cohort study. Using multinomial transition models adjusting for demographics, non-renal organ failure, sepsis, prior mental status, and sedative exposure, the authors examined the correlation between acute kidney injury and daily mental status.

The researchers found that stage 2 acute kidney injury was associated with increased risk of delirium and coma (odds ratios, 1.55 and 2.04, respectively), as was stage 3 acute kidney injury (odds ratios, 2.55 and 3.34, respectively). After adjustment for baseline values, daily peak serum creatinine values correlated with delirium and coma (odds ratios, 1.35 and 1.44, respectively). The association between stage 3 [acute kidney injury](#) and daily peak serum creatinine and both delirium and coma was modified by renal replacement therapy.

"Acute kidney injury is a risk factor for delirium and [coma](#) during critical illness," the authors write.

**More information:** [Full Text \(subscription or payment may be required\)](#)

Copyright © 2016 [HealthDay](#). All rights reserved.

Citation: Acute kidney injury is risk factor for delirium, coma (2016, November 24) retrieved 17 April 2024 from <https://medicalxpress.com/news/2016-11-acute-kidney-injury-factor-delirium.html>

This document is subject to copyright. Apart from any fair dealing for the purpose of private study or research, no part may be reproduced without the written permission. The content is provided for information purposes only.