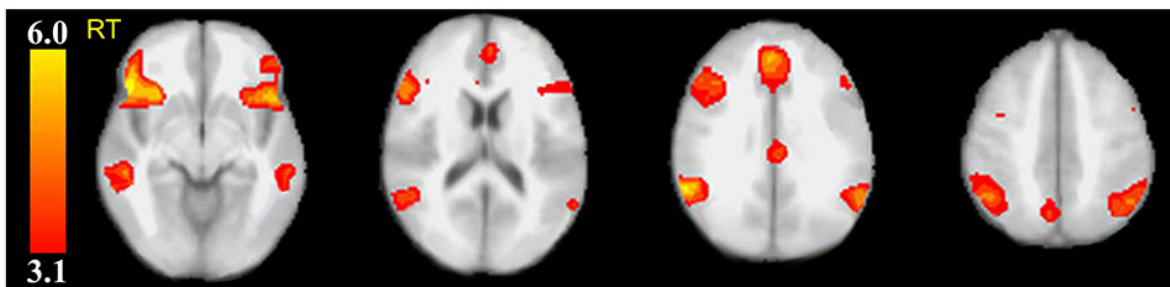


Illuminating lies with brain scan outshines polygraph test, study finds

November 3 2016

Figure 1. Pattern of Lie vs Truth Differences in Concealed Information Test Experiments (N = 60)^a



^aBased on Hakun et al.⁴⁸ Image is a Z-statistic map thresholded at voxel-height probability of $P < .001$ and cluster probability of $P < .05$ displayed over axial MNI T1 anatomic template. Significant clusters are located in the anterior cingulate cortex, bilateral inferior frontal, inferior parietal and medial temporal gyri, and the precuneus.

Abbreviation: MNI = Montreal Neurological Institute.

Image is a Z-statistic map threshold at voxel-height probability of P

Citation: Illuminating lies with brain scan outshines polygraph test, study finds (2016, November 3) retrieved 24 April 2024 from

<https://medicalxpress.com/news/2016-11-illuminating-lies-brain-scan-outshines.html>

This document is subject to copyright. Apart from any fair dealing for the purpose of private study or research, no part may be reproduced without the written permission. The content is

provided for information purposes only.