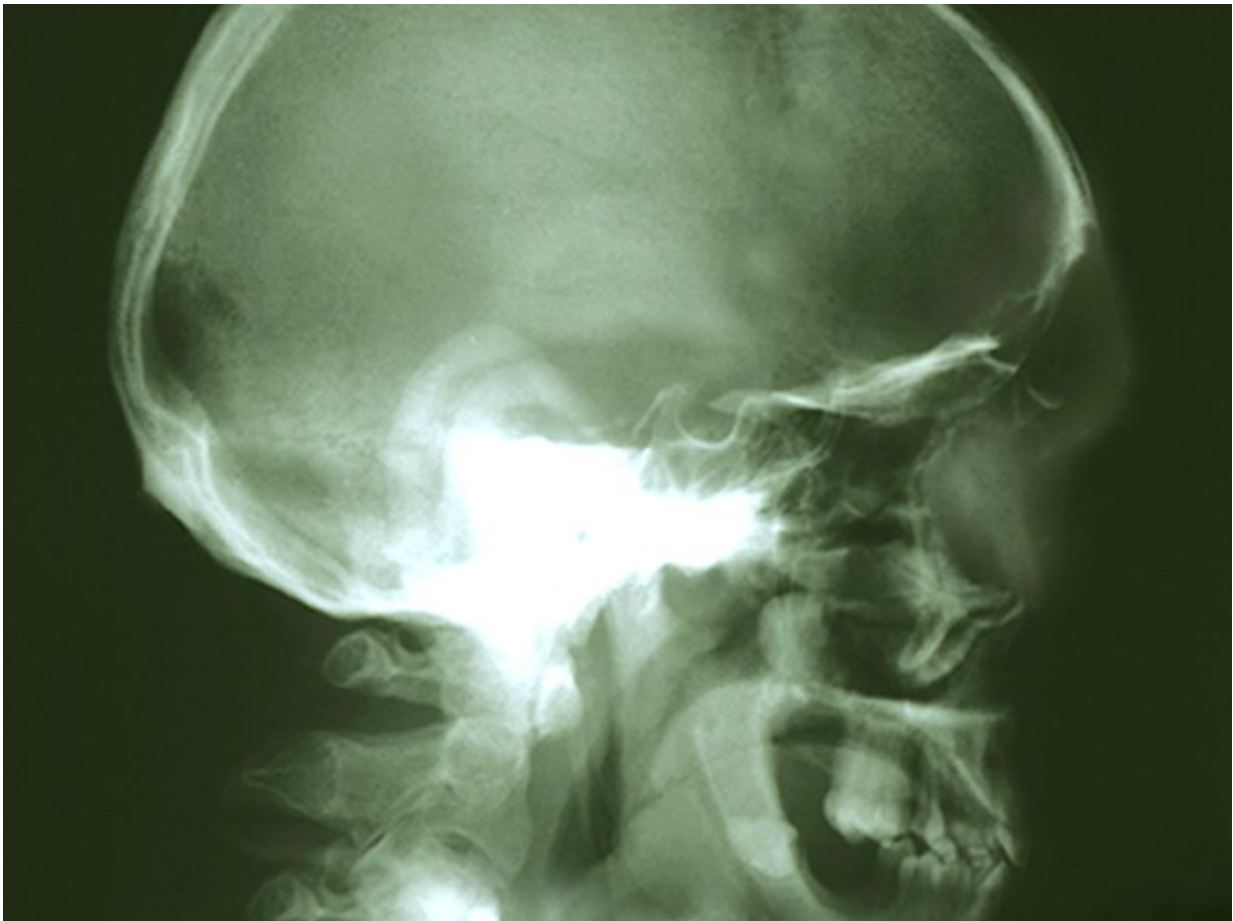


Multiple dysplastic lesions in esophagus up risk of SCC

November 9 2016



(HealthDay)—Patients with multiple areas of dysplastic squamous

epithelium have increased risk for metachronous squamous cell carcinomas in the upper aerodigestive tract, according to a study published in the November issue of *Gastroenterology*.

Chikatoshi Katada, M.D., Ph.D., from Kitasato University School of Medicine in Sagamihara, Japan, and colleagues examined data from 331 [patients](#) with early-stage esophageal SCC to assess the dysplastic squamous epithelium in the esophagus. Patients were classified according to the number of Lugol-voiding [lesions](#): no lesion, one to nine lesions, and 10 or more lesions (A, B, and C, respectively).

The researchers found that over the two-year study period, metachronous SCCs of the esophagus were detected in 4, 9.4, and 24.7 percent of patients in groups A, B, and C, respectively (P

"Multiple dysplastic lesions in the [esophagus](#) increase the risk of multiple SCCs," the authors write.

More information: [Full Text](#)

Copyright © 2016 [HealthDay](#). All rights reserved.

Citation: Multiple dysplastic lesions in esophagus up risk of SCC (2016, November 9) retrieved 26 April 2024 from <https://medicalxpress.com/news/2016-11-multiple-dysplastic-lesions-esophagus-scc.html>

<p>This document is subject to copyright. Apart from any fair dealing for the purpose of private study or research, no part may be reproduced without the written permission. The content is provided for information purposes only.</p>
--