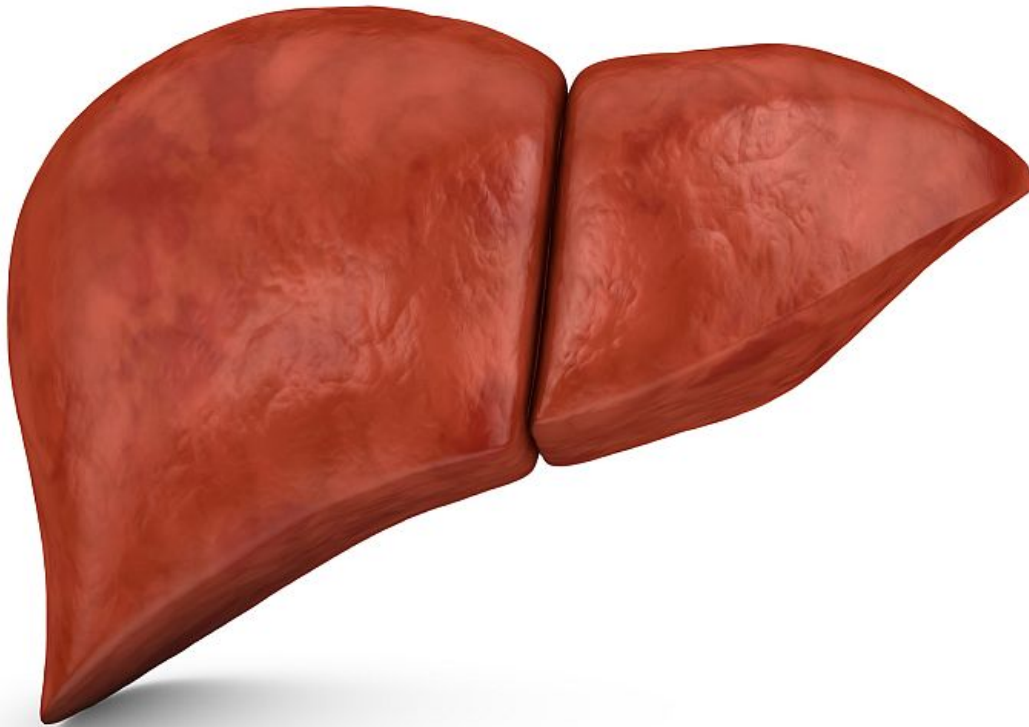


Chronic hepatitis B prevalence higher in those with T2DM

December 23 2016



(HealthDay)—Patients with type 2 diabetes have higher prevalence of

chronic hepatitis B virus infection (CHB), according to a study published online Dec. 8 in the *Journal of Diabetes Investigation*.

Jun Lu, Ph.D., from the Shanghai Jiao Tong University Affiliated Sixth People's Hospital, and colleagues investigated the prevalence of CHB status in different diabetes subtypes among a Chinese population. Participants included 381 cases with adult-onset autoimmune diabetes, 1,365 [patients](#) with type 2 diabetes, and 1,365 controls without diabetes.

The researchers found that patients with type 2 diabetes had higher prevalence of CHB than the controls in the overall population (13.5 versus 10.0 percent; $P = 0.004$) and among patients with normal hepatic function (13.3 versus 8.8 percent; $P = 0.002$). However, CHB status was not different between patients with adult-onset autoimmune diabetes and the controls. The odds ratio of CHB increased about 1.5-fold in patients with type 2 diabetes, compared to the control group, even after adjustment for age, gender, and [body mass index](#), regardless of hepatic function.

"Further research is required to ascertain whether CHB status increases the risk of developing type 2 diabetes, or whether type 2 diabetes, but not adult-onset [autoimmune diabetes](#), increases the risk of CHB," the authors write.

More information: [Full Text \(subscription or payment may be required\)](#)

Copyright © 2016 [HealthDay](#). All rights reserved.

Citation: Chronic hepatitis B prevalence higher in those with T2DM (2016, December 23) retrieved 3 May 2024 from <https://medicalxpress.com/news/2016-12-chronic-hepatitis-prevalence-higher-t2dm.html>

This document is subject to copyright. Apart from any fair dealing for the purpose of private study or research, no part may be reproduced without the written permission. The content is provided for information purposes only.