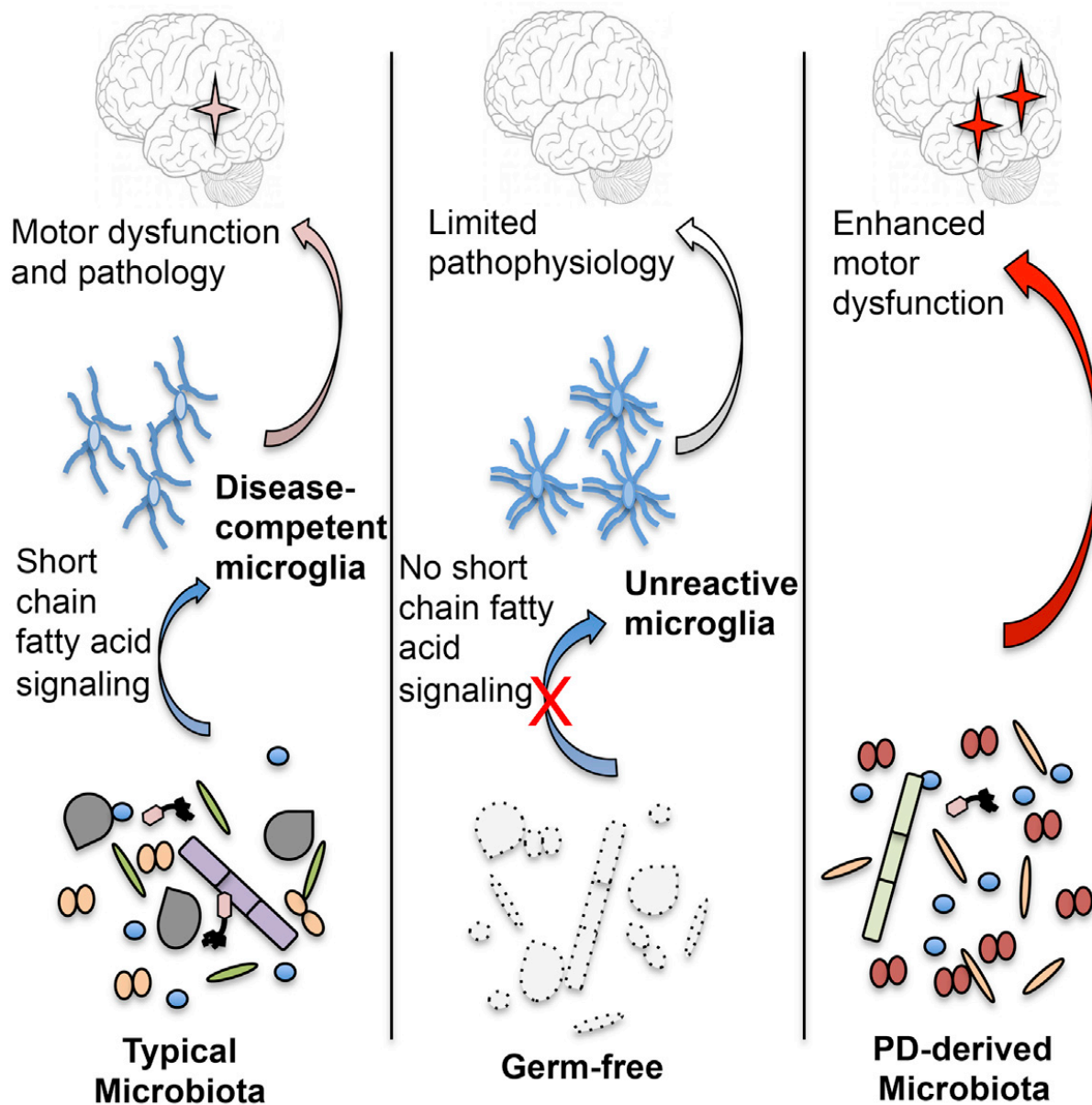


Parkinson's disease linked to microbiome

December 1 2016



This research depicts the findings of Sampson et al., who show that signals from

gut microbes are required for the neuroinflammatory responses as well as hallmark gastrointestinal and α -synuclein-dependent motor deficits in a model of Parkinson's disease. Credit: Sampson et al./*Cell* 2016

Caltech scientists have discovered for the first time a functional link between bacteria in the intestines and Parkinson's disease (PD). The researchers show that changes in the composition of gut bacterial populations—or possibly gut bacteria themselves—are actively contributing to and may even cause the deterioration of motor skills that is the hallmark of this disease.

The work—which has profound implications for the treatment of PD—was performed in the laboratory of Sarkis Mazmanian, the Luis B. and Nelly Soux Professor of Microbiology and Heritage Medical Research Institute Investigator, and appears in the December 1 issue of *Cell*.

PD affects 1 million people in the US and up to 10 million worldwide, making it the second most common neurodegenerative disease. Characteristic features of PD include symptoms such as tremors and difficulty walking, aggregation of a protein called alpha-synuclein (α Syn) within cells in the brain and gut, and the presence of inflammatory molecules called cytokines within the brain. In addition, 75 percent of people with PD have gastrointestinal (GI) abnormalities, primarily constipation.

"The gut is a permanent home to a diverse community of beneficial and sometimes harmful bacteria, known as the microbiome, that is important for the development and function of the immune and nervous systems," Mazmanian says. "Remarkably, 70 percent of all neurons in the peripheral nervous system—that is, not the brain or spinal cord—are in

the intestines, and the gut's nervous system is directly connected to the central nervous system through the vagus nerve. Because GI problems often precede the motor symptoms by many years, and because most PD cases are caused by environmental factors, we hypothesized that bacteria in the gut may contribute to PD."

To test this, the researchers utilized mice that overproduce α Syn and display symptoms of Parkinson's. One group of mice had a complex consortium of gut bacteria; the others, called germ-free mice, were bred in a completely sterile environment at Caltech and thus lacked gut bacteria. The researchers had both groups of mice perform several tasks to measure their motor skills, such as running on treadmills, crossing a beam, and descending from a pole. The germ-free mice performed significantly better than the mice with a complete microbiome.

"This was the 'eureka' moment," says Timothy Sampson, a postdoctoral scholar in biology and biological engineering and first author on the paper. "The mice were genetically identical; both groups were making too much α Syn. The only difference was the presence or absence of [gut microbiota](#). Once you remove the microbiome, the mice have normal [motor skills](#) even with the overproduction of α Syn."

"All three of the hallmark traits of Parkinson's were gone in the germ-free models," Sampson says. "Now we were quite confident that gut bacteria regulate, and are even required for, the symptoms of PD. So, we wanted to know how this happens."

When gut bacteria break down dietary fiber, they produce molecules called short-chain fatty acids (SCFAs), such as acetate and butyrate. Previous research has shown that these molecules also can activate immune responses in the brain. Thus, Mazmanian's group hypothesized that an imbalance in the levels of SCFAs regulates brain inflammation and other symptoms of PD. Indeed, when germ-free mice were fed

SCFAs, cells called microglia—which are immune cells residing in the brain—became activated. Such inflammatory processes can cause neurons to malfunction or even die. In fact, germ-free mice fed SCFAs now showed motor disabilities and α Syn aggregation in regions of the brain linked to PD.

In a final set of experiments, Mazmanian and his group collaborated with Ali Keshavarzian, a gastroenterologist at Rush University in Chicago, to obtain fecal samples from patients with PD and from healthy controls. The human microbiome samples were transplanted into germ-free mice, which then remarkably began to exhibit symptoms of PD. These mice also showed higher levels of SCFAs in their feces. Transplanted fecal samples from healthy individuals, in contrast, did not trigger PD symptoms, unlike mice harboring [gut bacteria](#) from PD patients.

"This really closed the loop for us," Mazmanian says. "The data suggest that changes to the [gut microbiome](#) are likely more than just a consequence of PD. It's a provocative finding that needs to be further studied, but the fact that you can transplant the microbiome from humans to [mice](#) and transfer symptoms suggests that bacteria are a major contributor to disease."

The findings have important implications for the treatment of Parkinson's, the researchers say.

"For many neurological conditions, the conventional treatment approach is to get a drug into the brain. However, if PD is indeed not solely caused by changes in the brain but instead by changes in the microbiome, then you may just have to get drugs into the gut to help patients, which is much easier to do," Mazmanian says. Such drugs could be designed to modulate SCFA levels, deliver beneficial probiotics, or remove harmful organisms. "This new concept may lead to safer therapies with fewer side effects compared to current treatments."

More information: "Gut Microbiota Regulate Motor Deficits and Neuroinflammation in a Model of Parkinson's Disease" *Cell*, DOI: [10.1016/j.cell.2016.11.018](https://doi.org/10.1016/j.cell.2016.11.018) ,
[http://www.cell.com/cell/fulltext/S0092-8674\(16\)31590-2](http://www.cell.com/cell/fulltext/S0092-8674(16)31590-2)

Provided by California Institute of Technology

Citation: Parkinson's disease linked to microbiome (2016, December 1) retrieved 28 April 2024 from <https://medicalxpress.com/news/2016-12-parkinson-disease-linked-microbiome.html>

<p>This document is subject to copyright. Apart from any fair dealing for the purpose of private study or research, no part may be reproduced without the written permission. The content is provided for information purposes only.</p>
--