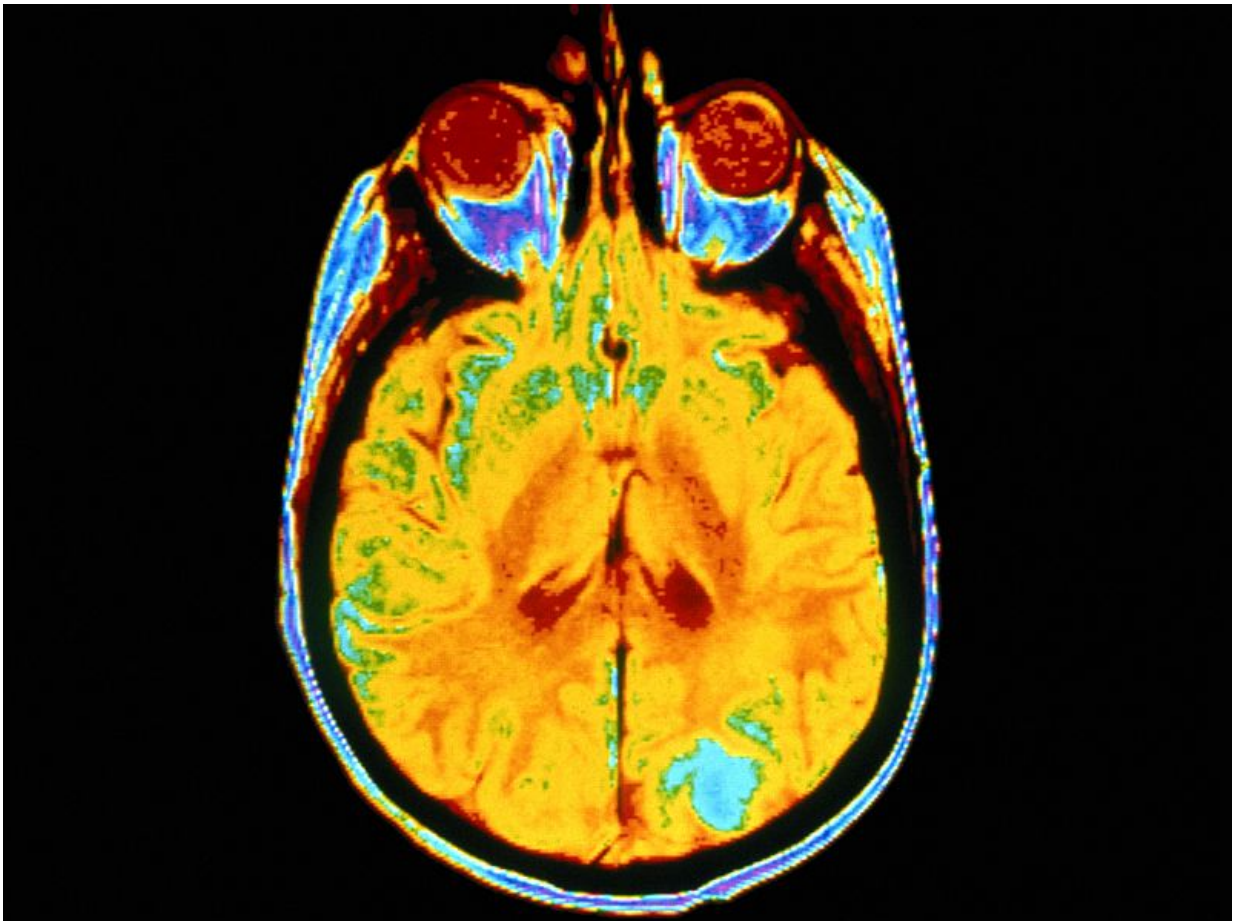


# Comorbid neuropathies common with MCI diagnosis

February 28 2017

---



(HealthDay)—A diagnosis of mild cognitive impairment (MCI) is

frequently associated with comorbid neuropathologies, according to a study published online Feb. 22 in the *Annals of Neurology*.

Erin L. Abner, Ph.D., from the University of Kentucky in Lexington, and colleagues used data drawn from a large autopsy series of 1,337 individuals followed longitudinally from normal or MCI status to death from four U.S. Alzheimer's Disease (AD) Centers.

The researchers found that the final clinical diagnoses varied for the 874 individuals ever diagnosed with MCI: 39.2, 46.8, and 13.9 percent died with an MCI diagnosis, a dementia diagnosis, and a diagnosis of intact cognition, respectively. Those with a diagnosis of intact cognition had pathological features resembling those with a final clinical diagnosis of MCI. Primary age-related tauopathy and brain arteriolosclerosis [pathology](#) were more severe in MCI than cognitively intact controls (P

"MCI [diagnosis](#) usually was associated with comorbid neuropathologies; less than one-quarter of MCI cases showed 'pure' AD at autopsy," the authors write.

**More information:** [Abstract](#)  
[Full Text \(subscription or payment may be required\)](#)

Copyright © 2017 [HealthDay](#). All rights reserved.

Citation: Comorbid neuropathies common with MCI diagnosis (2017, February 28) retrieved 6 May 2024 from <https://medicalxpress.com/news/2017-02-comorbid-neuropathies-common-mci-diagnosis.html>

This document is subject to copyright. Apart from any fair dealing for the purpose of private study or research, no part may be reproduced without the written permission. The content is provided for information purposes only.
---