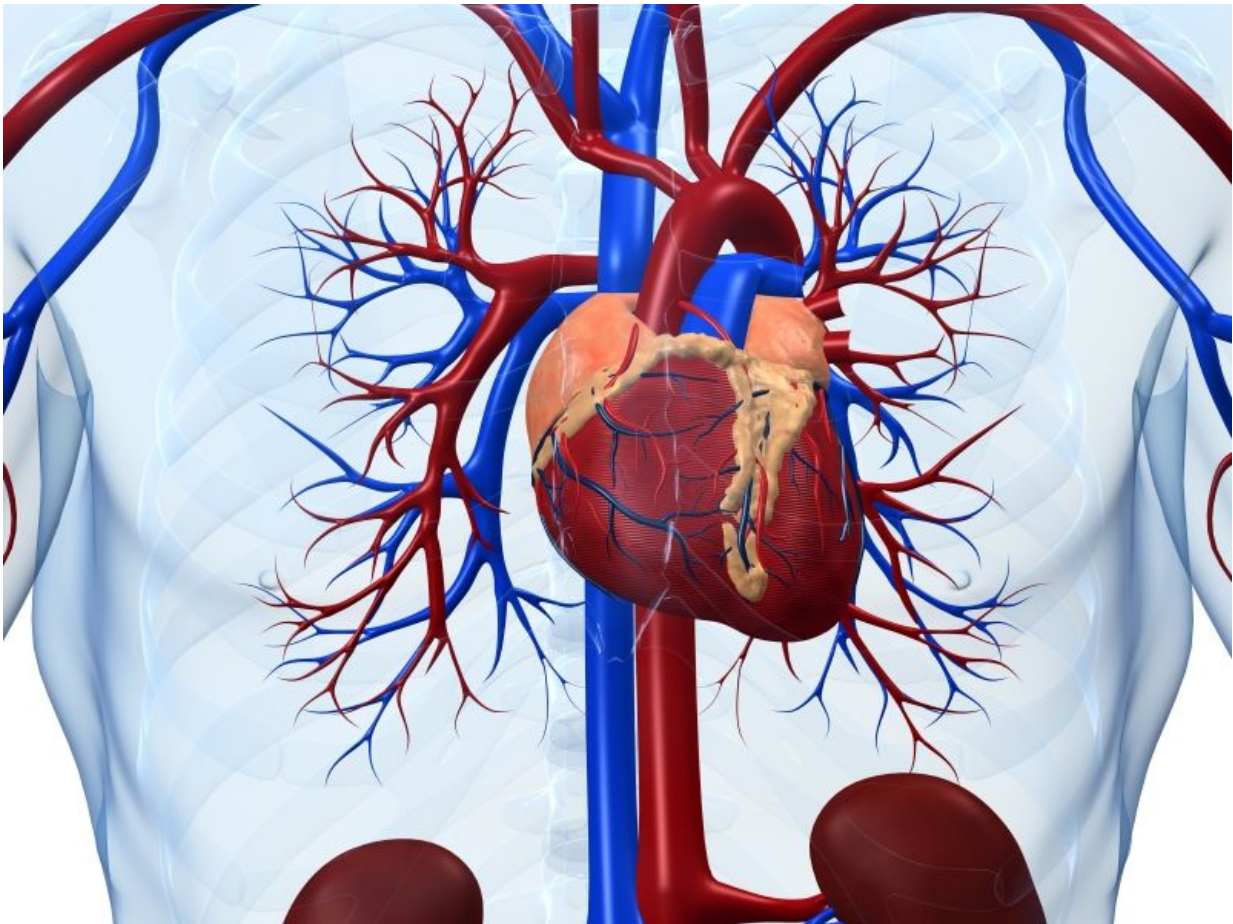


Renal transplant recipients often admitted with acute MI

February 9 2017



(HealthDay)—Renal transplant recipients (RTRs) are often admitted

with acute myocardial infarction (AMI), according to a study published in the Feb. 15 issue of *The American Journal of Cardiology*.

Sahil Agrawal, M.D., from St. Luke's University Health Network in Bethlehem, Penn., and colleagues examined recent trends in AMI admissions for 9,243 RTRs with functioning grafts. Data were compared to those of 160,932 patients with end-stage renal disease without transplantation (ESRD-NRT) and 5,640,851 patients without advanced kidney disease (non-ESRD/RT) admitted with AMI.

The researchers found that 0.2 percent of AMI admissions were RTRs, with increasing numbers during the study period (adjusted odds ratio [aOR], 1.04; 95 percent confidence interval [CI], 1.04 to 1.05; P_{trend} myocardial infarction (STEMI) accounted for 29.3 percent of RTR admissions. History of renal transplantation correlated with decreased likelihood of STEMI at presentation compared with non-ESRD/RT (aOR, 0.73; 95 percent CI, 0.65 to 0.80; P

"RTRs were frequently admitted with AMI, particularly NSTEMI," the authors write.

More information: [Full Text \(subscription or payment may be required\)](#)

Copyright © 2017 [HealthDay](#). All rights reserved.

Citation: Renal transplant recipients often admitted with acute MI (2017, February 9) retrieved 1 May 2024 from <https://medicalxpress.com/news/2017-02-renal-transplant-recipients-acute-mi.html>

This document is subject to copyright. Apart from any fair dealing for the purpose of private study or research, no part may be reproduced without the written permission. The content is provided for information purposes only.
