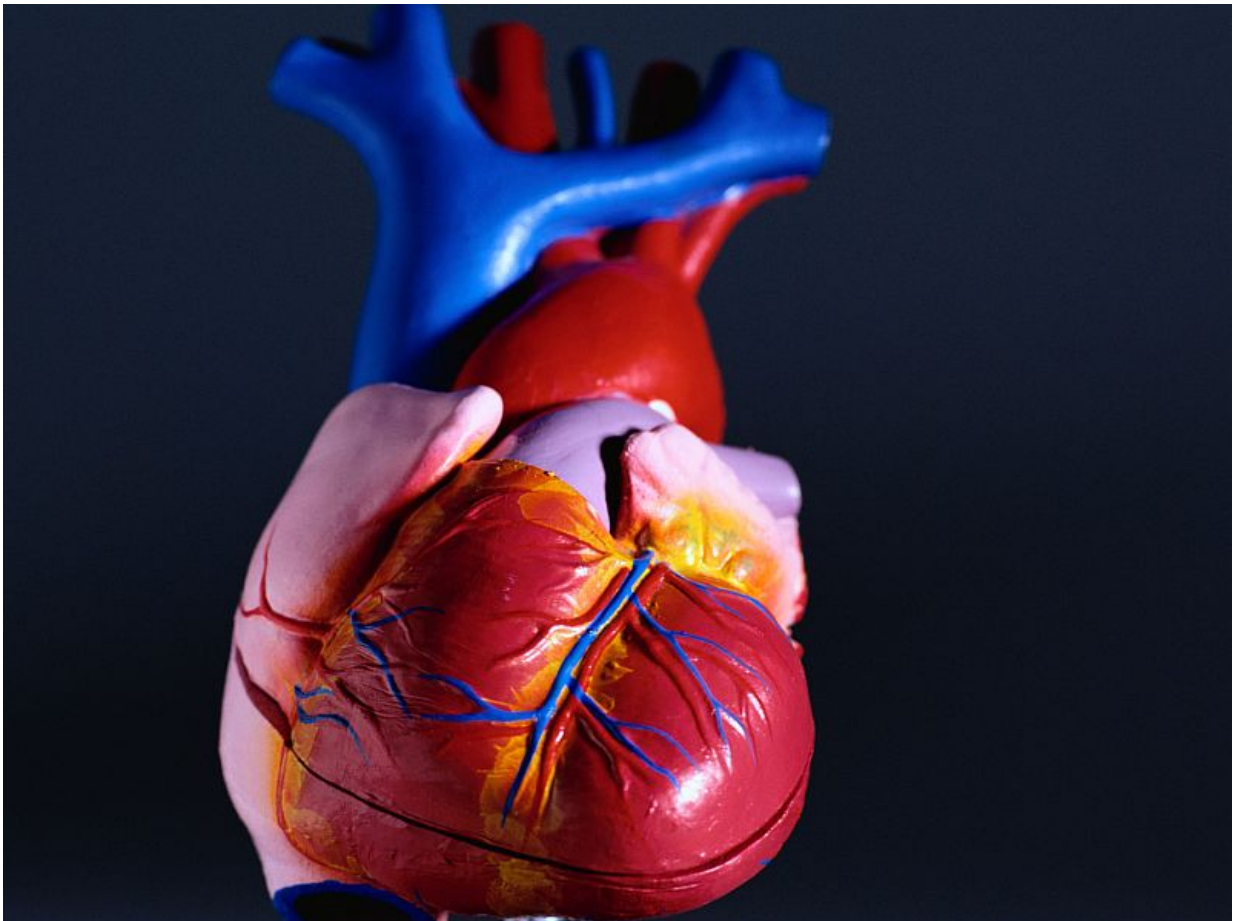


# Risk of heart failure up for rheumatoid arthritis patients

March 14 2017

---



(HealthDay)—Patients with rheumatoid arthritis (RA) have increased

risk of heart failure, according to a study published in the March 14 issue of the *Journal of the American College of Cardiology*.

Ängla Mantel, M.D., from the Karolinska Institutet in Stockholm, and colleagues identified two contemporary cohorts of RA subjects from Swedish patient and rheumatology registries and matched them 1:10 to comparator subjects from the general population. The authors assessed first-ever heart failure diagnosis through registry linkages.

The researchers found that a history of heart failure was not more common in RA by the time of RA onset. The overall hazard ratios for subsequent heart failure (any type), ischemic heart failure, and non-ischemic heart failure were between 1.22 and 1.27 among new-onset RA [patients](#). There was a rapid increase in the risk of non-ischemic heart failure after onset of RA, in contrast to the risk of ischemic heart failure. There were correlations for high disease activity with all heart failure types, with the most pronounced correlation for non-ischemic heart failure. For the different heart failure subtypes, the hazard ratios were between 1.71 and 1.88 in the cohort of patients with RA of any duration.

"Patients with RA are at [increased risk](#) of heart failure that cannot be explained by their increased risk of [ischemic heart disease](#)," the authors write. "The increased risk of non-ischemic [heart failure](#) occurred early and was associated with RA severity."

One author disclosed financial ties to the pharmaceutical industry.

**More information:** [Abstract/Full Text \(subscription or payment may be required\)](#)  
[Editorial \(subscription or payment may be required\)](#)

Copyright © 2017 [HealthDay](#). All rights reserved.

Citation: Risk of heart failure up for rheumatoid arthritis patients (2017, March 14) retrieved 9 April 2024 from

<https://medicalxpress.com/news/2017-03-heart-failure-rheumatoid-arthritis-patients.html>

This document is subject to copyright. Apart from any fair dealing for the purpose of private study or research, no part may be reproduced without the written permission. The content is provided for information purposes only.